

RED HAT

Presented by



FREE PRESS

THE OFFICIAL PUBLICATION OF THE RED HAT SUMMIT AND JBOSS WORLD

FRIDAY, SEPTEMBER 4, 2009

RHCEs OF THE YEAR HONORED AT RED HAT RECEPTION



INDIA



NORTH AMERICA



LATIN AMERICA



EUROPE

Winners of the 2009 Red Hat Certified Engineer of the Year contest were lauded last night by their RHCE peers at a special reception. There are more than 40,000 RHCE in 152 countries across the globe. The five regional winners all demonstrated hard work, expertise and innovation utilizing RHCE skills to solve complex technical problems to deliver value to their companies and institutions.

Congratulations to the 2009 RHCE of the Year winners!

BERNARD CHEW, SINGAPORE. Chew currently serves as a network administrator with muvee Technologies Pte Ltd, a Singapore-based company that produces automated video editing software. Achieving RHCE credentials has enabled Chew

to accelerate his career and sharpen his Linux skills. The company launched into the web arena in 2007 and required a robust infrastructure to be architected in a three-month time period to meet business requirements such as reliability and scalability. As an RHCE, Chew had the necessary skills to deploy Red Hat Global File System and virtualization to meet muvee's business goals within a short timeframe without him even needing to go onsite.

ALEX DAVIES, EUROPE. At 22 years old, Davies is the youngest IT engineer at PartyGaming, a leading online gaming company. He's running large web and MySQL clusters around the globe, and his RHCE training has allowed Davies to identify ways to improve uptime, scalability and perfor-

mance on his systems. RHCE provided a solid knowledge foundation for his current day-to-day role and has opened doors to new development opportunities.

SEBASTIAN GONZALEZ, LATIN AMERICA Gonzalez is an infrastructure specialist for EDS, an HP company. He has utilized his RHCE skills to successfully oversee the migration of several environments running on other operating systems to Red Hat Enterprise Linux.

JOHN ROSE, NORTH AMERICA. Rose is a systems analyst at Iowa State University and was first inspired to become a RHCE at the 2005 Red Hat Summit. Rose has utilized his RHCE skills at Iowa State University working with Red Hat Enterprise

Linux, Red Hat Network Proxy and Satellite servers and Red Hat Directory Server. He is also one of the leading contributors to community Red Hat Enterprise Linux support in #rhel on freenode. As a result of Rose's increased participation in the Red Hat community, he became a contributor to the Fedora Project and serves as the Central United States Regional Ambassador for Fedora.

BALAJI SIRASANI, INDIA. Sirasani is a senior quality assurance engineer at Computer Associates and manages a lab with more than 150 machines. He has utilized his RHCE skills to easily set up Kickstart with Red Hat Network, reducing the time and effort it previously took to manually install machines.

IN CASE YOU MISSED IT...



RED HAT BOOTH

PHOTO BY ANDRIUS, VIA THE RED HAT AND JBOSS WORLD FLIKR POOL
FLICKR.COM/GROUPS/SUMMIT-JBOSSWORLD09

THE TIME FOR JBOSS IS NOW

You don't have to go far today to see evidence that the weak economy is driving more enterprises to consider open source software for mission-critical use. Dozens of industry analysts' reports all point to survey respondents acknowledging increases in open source adoption and plans for future growth across their enterprises.

Further, Red Hat's strong Q1 2010 earnings demonstrate that the value of open source solutions are resonating in the marketplace. One of the factors contributing to Red Hat's growth is the momentum around our middleware solutions.

It's encouraging news, and just as Linux exploded into the enterprise five years ago with the introduction of Red Hat Enterprise Linux, now is the time for enterprises to adopt open source middleware for mission-critical applications.

Recent conversations with customers confirm many of the analyst reports and what we are seeing in our growth numbers. Customers who in the past might not have considered open source middleware for mission-critical production are standardizing on JBoss Enterprise Middleware for

not only their application server needs, but also for SOA, integration, rules management and portals.

What's driving this growth? First, its Red Hat's value proposition coupled with the economic conditions that have led to success for open source solutions in the marketplace. But almost equally as important is that customers are turning to open source middleware because it is a strategic alternative to the few proprietary offerings in the market today. As the number of middleware vendors shrinks and the market becomes more consolidated, customers are looking for solutions that provide value without vendor lock-in. Customers don't want to have the entire IT organization controlled by one vendor, and open source middleware solutions like JBoss Enterprise Middleware have filled this gap by providing a high-value, high-quality open source alternatives to proprietary middleware.

To learn more about JBoss Enterprise Middleware, stop by the JBoss booth and talk with one of our solutions architects or Developers about how your company can take advantage of open source middleware.

RED HAT SUMMIT AGENDA FRIDAY

	A WHAT'S NEW	B WHAT'S NEXT	C DECODING THE CODE
9:45 AM	Collaborative Innovation	Stop Underutilizing your Computer	User-Driven Grid Provisioning and Automated Power Management
11:00 AM	SPICE: Enabling the Standard Desktop Remoting Protocol	Maximizing AMD Six-Core Opteron™ Processor Performance with Red Hat Enterprise Linux	Simplifying New Server Deployment

JBOSS WORLD AGENDA FRIDAY

	H CARVE OUT COSTS	I WHAT'S NEW	J WHAT'S NEXT
9:45 AM		The Tao of Teiid	Beyond Rails with TorqueBox
11:00 AM	Scaling Clean Energy and Reducing Operations Costs with jBPM	Using JBoss Enterprise Middleware in NAVTEQ	Writing Telco 2.0 applications with JBoss Communications Platform based on Mobicents

AGENDA AT A GLANCE

RED HAT :: CHICAGO :: 2009 SUMMIT

7:30 a.m.-8:30 a.m.	Breakfast
8:30 a.m.-9:30 a.m.	Joint Expert Panel
9:45 a.m.-12 p.m.	Breakout sessions
10 a.m.-12 p.m.	Campground
12 p.m.- 2 p.m.	Lunch, Innovation Awards, RHCE of the Year, Closing Ceremony

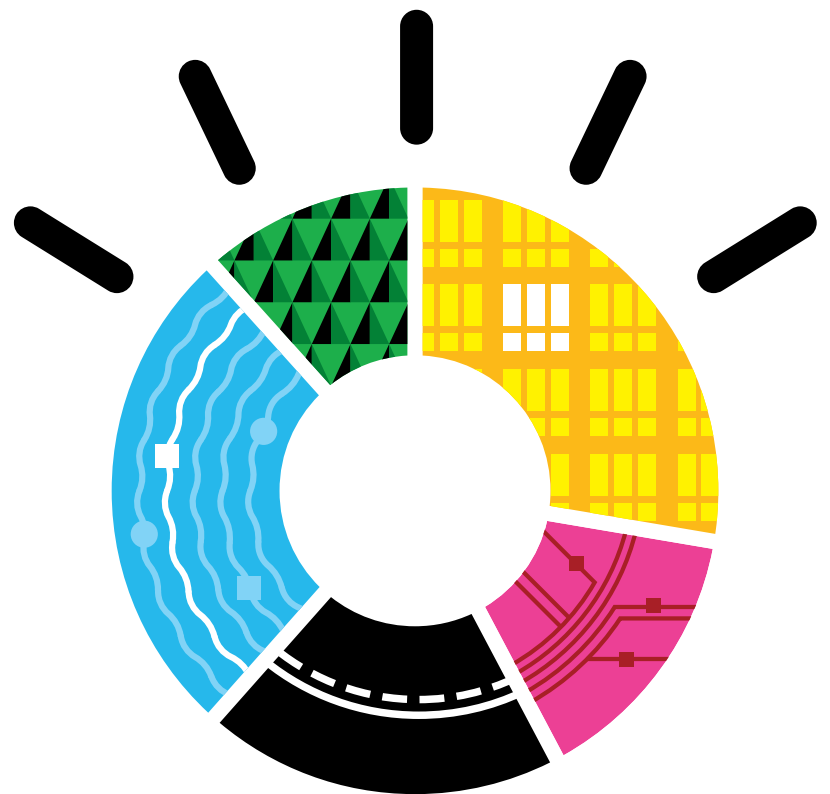
JBoss WORLD CHICAGO 2009

7:30 a.m.-8:30 a.m.	Breakfast
8:30 a.m.-9:30 a.m.	Joint Expert Panel
9:45 a.m.-12 p.m.	Breakout sessions
10 a.m.-12 p.m.	Campground
12 p.m.- 2 p.m.	Lunch, Innovation Awards, RHCE of the Year, Closing Ceremony

IN CASE YOU MISSED IT...



Up to 85% of computing capacity sits idle in distributed environments. A smarter planet needs smarter infrastructure. Let's build a smarter planet. ibm.com/dynamic



THINK 

IBM, the IBM logo and ibm.com are trademarks of International Business Machines Corporation, registered in many jurisdictions worldwide. A current list of IBM trademarks is available on the Web at "Copyright and trademark information" at www.ibm.com/legal/copytrade.shtml.


DLT SOLUTIONS INC.

Red Hat's Largest Government Reseller and Exclusive VAR in the Academic Space

Visit us at Booth #218
www.dlt.com/redhat

intel

SMART. IT'S THE NEW SPEED



Server processors that automatically Adapt to your workload. That's the new it intelligence.
intel.com/intelligence

BIRT Exchange
by ACTUATE



Bundled with JBoss Tools

BIRT: The best choice for adding data visualizations to your JBoss applications.
Come find out why at booth 214.

Visit us at Booth #719.



AMD
The future is fusion

© 2009 AMD, the AMD Arrow logo, ATI, the ATI logo, and combinations thereof are the trademarks of Advanced Micro Devices, Inc.

9:45 AM	D RED HAT IN REALITY Understanding the Cost Savings Associated with Consolidating SAP Environments on IBM Power Systems™	E OPEN SOURCE FOR IT LEADERS Safeguarding your Data with Desktop Virtualization	F CARVE OUT COSTS Desktop Virtualization: Achieving Real TCO Savings	SAP Operating System and Data Base Migrations to Red Hat Enterprise Linux 3 rd FLOOR JOLIET ROOM
	11:00 AM	Automation and Management of the Application Stack	The Challenge of Patent Trolls: How to Contribute Prior Art	Open Source Virtualization

9:45 AM	K OPEN SOURCE FOR IT LEADERS A Collaborative Platform for the Pharmaceutical Industry using JBoss Enterprise Portal Platform and Alfresco	L DECODING THE CODE How to Effectively Manage Java Applications
	11:00 AM	SOA Based Application Architecture on JBoss Platform for Multiple Business Domains

LAB SCHEDULE

G HANDS-ON LABS

9:45 AM - 11:45 AM
RED HAT SUMMIT LAB
Cloud Computing with Red Hat Enterprise Linux on Amazon EC2

SUPPORTED BY amazon

Rock IT With

INGRES

PICK UP YOUR BACKSTAGE PASS AT INGRES BOOTH #520

Carahsoft Technology Corp. is the trusted Government IT solutions provider delivering industry-leading open source solutions to federal, state and local government agencies.

carahsoft
open source for government

866-925-OPEN or opensource@carahsoft.com
Visit www.carahsoft.com/opensource

Trouble joining Linux to Active Directory?
Try Likewise.

Reduce operating costs, improve security and enhance compliance.

Likewise
www.likewise.com



HILTI STANDARDIZES GLOBAL MISSION-CRITICAL SYSTEMS

Hilti Corporation, a world-renowned manufacturer of leading-edge technology and products for the global construction industry, has migrated its critical systems running SAP® applications from Tru64 UNIX to Red Hat Enterprise Linux, Red Hat Cluster Suite and Red Hat Global File System (GFS).

When HP announced it would discontinue development and support for Tru64 UNIX and Alpha Server in 2004, Hilti looked for an alternative platform for its critical systems.

"We were experiencing a classic case of vendor lock-in and the expertise our team had built over many years was suddenly depreciating rapidly," said Michael Hagmann, head of Enterprise Server Technology at Hilti Corporation.

A strong argument in favor of choosing Red Hat solutions was that all of Hilti's application vendors, including SAP, have certified their products to run on Red Hat Enterprise Linux. The organization's largest and most critical systems rely on SAP Business Suite, SAP ERP and SAP CRM,

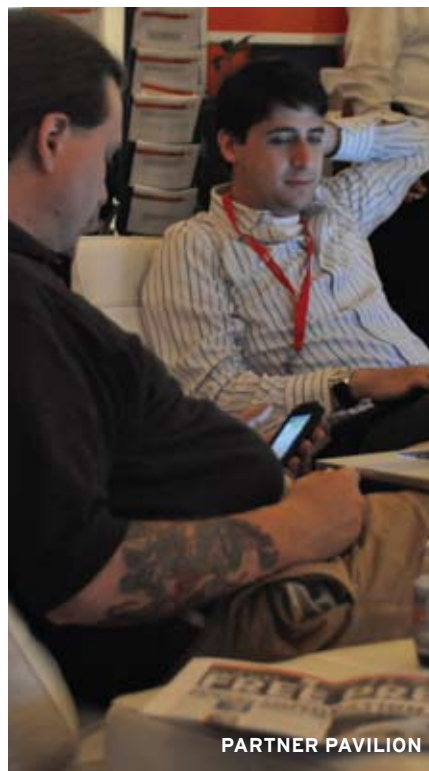
each with more than 5 TB of data. Hilti wanted to consolidate, standardize and expand its SAP software-based environment to improve its business performance and enhance its systems reporting capabilities.

The migration to Red Hat solutions has delivered increased performance and reduced costs and has provided the company with a long-term platform strategy that enables Hilti to be highly responsive to the increasing requirements of a global manufacturing sales and service organization.

"By migrating our SAP applications to Red Hat Enterprise Linux on HP ProLiant servers, we have experienced increased performance by more than 100%, and reduced IT costs. Having a tight level of integration between the Red Hat and SAP support organizations gives us the confidence to continue along this path and further reduce our costs by migrating all of our SAP environments to Red Hat Enterprise Linux," said Martin Petry, CIO at Hilti Corporation.

To read the full Hilti case study and see more Red Hat case studies, visit customers.redhat.com.

ICYMI...



WHAT IS A PATH?

Paths feature specific IT solutions and will guide you through all tracks featured at The Red Hat Summit and JBoss World.

On the Summit side, choose from:

DEPLOY MANAGE+SECURE
VIRTUALIZE OPTIMIZE

For JBoss World side, choose from:

OPERATE+MANAGE DEVELOP+RIA
INTEGRATE+SOA

Interested in sessions from both the Summit and JBoss World? Check out the these paths:

CATALYST STRATEGIZE

WHAT IS A TRACK?

Interested in one specific open source topic? Follow a track through the entire event and you're covered. Choose from What's New, What's Next, Decoding the Code, Carve out Costs, Open Source for IT Leaders and Red Hat in Reality.

VIZURI
Experience • Innovation • Results

Rich Internet Applications
JBoss Seam, Web 2.0, jQuery, Ajax

SOA Integration
Web Services, JBoss ESB, Governance

Identity Management
Oracle IdM, CAS, SSO, PKI, X.509

RED HAT 2009 INNOVATION AWARD WINNER

ASSOCIATE SPONSOR 2009 RED HAT SUMMIT

redhat ADVANCED BUSINESS PARTNER

Alfresco

EnterpriseDB

JBoss Certified Systems Integrator

A MARVEL OF MODERN REENGINEERING.

Introducing the new Dell™ PowerEdge™ Server Solution, featuring a new generation of intelligent server processors with the Intel® Xeon® Processor 5500 Series. And the industry's best performance per watt. If you thought you knew Dell, think again.

- Customized. Personalized. Recognized. Dell ranked #1 in server customer satisfaction.
- Future proof design. Dramatically reduce your power consumption and run more efficiently in your data center.
- Reduced deployment time. The world's only server with instant-on embedded systems management. No media required.

SIMPLIFY IT. MINIMIZE RISK.
MIGRATE TO DELL POWEREDGE SERVERS AT DELL.COM/RISCMIGRATION

© 2009 Dell. All rights reserved. Intel, the Intel logo, Xeon and Xeon Inside are trademarks or registered trademarks of Intel Corporation in the U.S. and other countries.



JIM'S GUIDE TO CHICAGO

Red Hat President and CEO Jim Whitehurst spent a few years in Chicago earlier in his career, and his wife, Lauren, is a Chicago native. Have some downtime during Red Hat Summit and JBoss World or planning to stay for Labor Day weekend? Here are some recommendations that get Jim's seal of approval.

RESTAURANTS

Japonais

600 W. Chicago Avenue
Contemporary Japanese cuisine along the river

Custom House

500 S. Dearborn Street
Regional American fare featuring locally-sourced, sustainable, seasonal, ingredient-driven cuisine with a strong Mediterranean influence

Mercat a la Planxa

638 S. Michigan Avenue
New Catalan destination for breakfast, brunch, lunch or dinner

The Gage

24 S. Michigan Avenue
Selections range from fried chicken livers to big eye tuna, just steps from Millennium Park

Terzo Piano

159 E. Monroe Street – Modern Wing of the Art Institute
Ingredients from local family farms, farmers' markets and artisan producers and a great view of Millennium Park and Michigan Avenue

BARS

Roof at the Wit Hotel

201 N. State Street
Indoor/outdoor lounge located on the 27th floor, featuring panoramic city views, roaring fire pits, live music and telescopes

Bin 36

339 N. Dearborn
Wine novices and wine geeks alike can enjoy more than 50 wines by the glass

Pops for Champagne on State

601 N. State Street
Listen to some of Chicago's best live jazz

ENTERTAINMENT

If you're looking for entertainment, there's no lack of exciting things to do in the city. Check out the following:

Art Institute of Chicago

111 South Michigan Avenue
Visit the Modern Wing which just opened in May and showcases works by artists such as Picasso, Matisse, Wassily Kandinsky, Jackson Pollock, de Kooning and Eva Hesse.

Millennium Park

The 24.5-acre park serves as a center for art, music, architecture and landscape design. Be sure to visit artist Anish Kapoor's Cloud Gate, a 110-ton elliptical sculpture forged of a seamless series of highly polished stainless steel plates which reflect the city's famous skyline and the clouds above. Rent Segways on Jackson Street to cruise along the lake front.

Chicago Architectural Cruise

Cruise down the historic Chicago River while learning about Chicago's architectural landmarks.

Walking Tour of Michigan Avenue

Stretching from the Chicago River north to Oak Street, this stretch of Michigan Avenue, lined with shops, hotels and several landmark buildings, is known as the Magnificent Mile. Take a detour on Oak Street for window shopping at luxury boutiques including Prada, Hermès, Harry Winston, Bang & Olufsen and Yves Saint Laurent.

MAJOR LEAGUE BASEBALL

Check out the Chicago White Sox in action as they take on Boston, Sept. 4-7, at U.S. Cellular Field.

IN CASE YOU MISSED IT...



Has your Server lost its SPARK?

Break free from RISC today.
Break even in 6 months.

Join the great migration to the HP adaptive infrastructure.
www.hp.com/go/rhel

Visit HP booth #725, learn more and win a Prize!!



COOL STUFF STORE
IN THE NORMANDIE LOUNGE

FOLLOW THE (OPEN SOURCE) LEADER
▶ twitter.com/redhat #rhsummit

INNOVATOR OF THE YEAR:

(Fill in the blank Friday at noon)

EnterpriseDB®
The Enterprise Postgres Company

Booth #714
Register to win a Linux Netbook

www.EnterpriseDB.com

Zenoss®
Open Source Enterprise Monitoring

Monitor Servers, Network, and Applications, Performance & Availability
Free and Open Source (GPLv2)
Google Maps Integration
Automatic Discovery & Inventory

Stop by the Zenoss Booth #721 to see a live demo

Enter to win a Dell Mini 12!

© 2009 Cisco Systems, Inc. All rights reserved.

There's never been a better time to change. To find new ways to innovate. New ways to collaborate. New ways to thrive. New ways to share human knowledge, to work together, solve problems together and bring the world a little closer.

Unify. Simplify. Amplify.

that's the **human network** effect



Learn about Cisco's Data Center Solutions
[visit booth 212.](#)

welcome to the human network. **CISCO**

MISS A PRESENTATION?
▶ www.redhat.com/promo/summit/2009/downloads