



**Jim Yang**

Engineering Manager, [jimyang@redhat.com](mailto:jimyang@redhat.com)

OSS Identity Management

How to Leverage Open Source to Manage Your Identity

# AGENDA

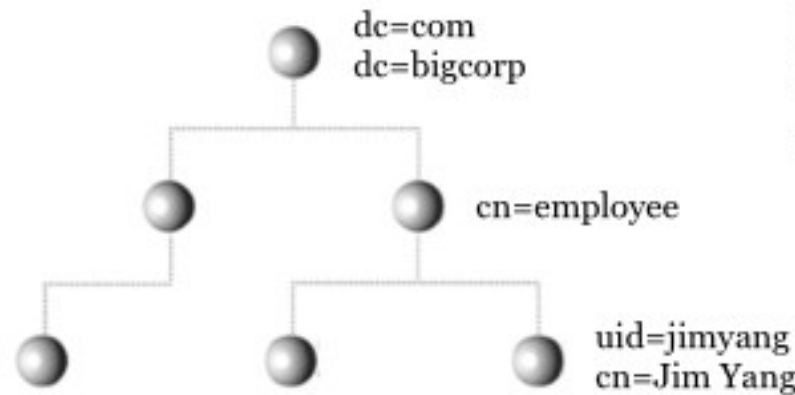
- Introduction
- Penrose Overview
- Penrose Use Cases
- Velo Overview
- Customers Discussion Panel

# PENROSE VIRTUAL DIRECTORY



## **3 Publish:**

Public virtual views,  
creating a single logical and  
authoritative directory



## **2 Create:**

Create virtual hierarchical  
views that integrate, transform  
and aggregate your data

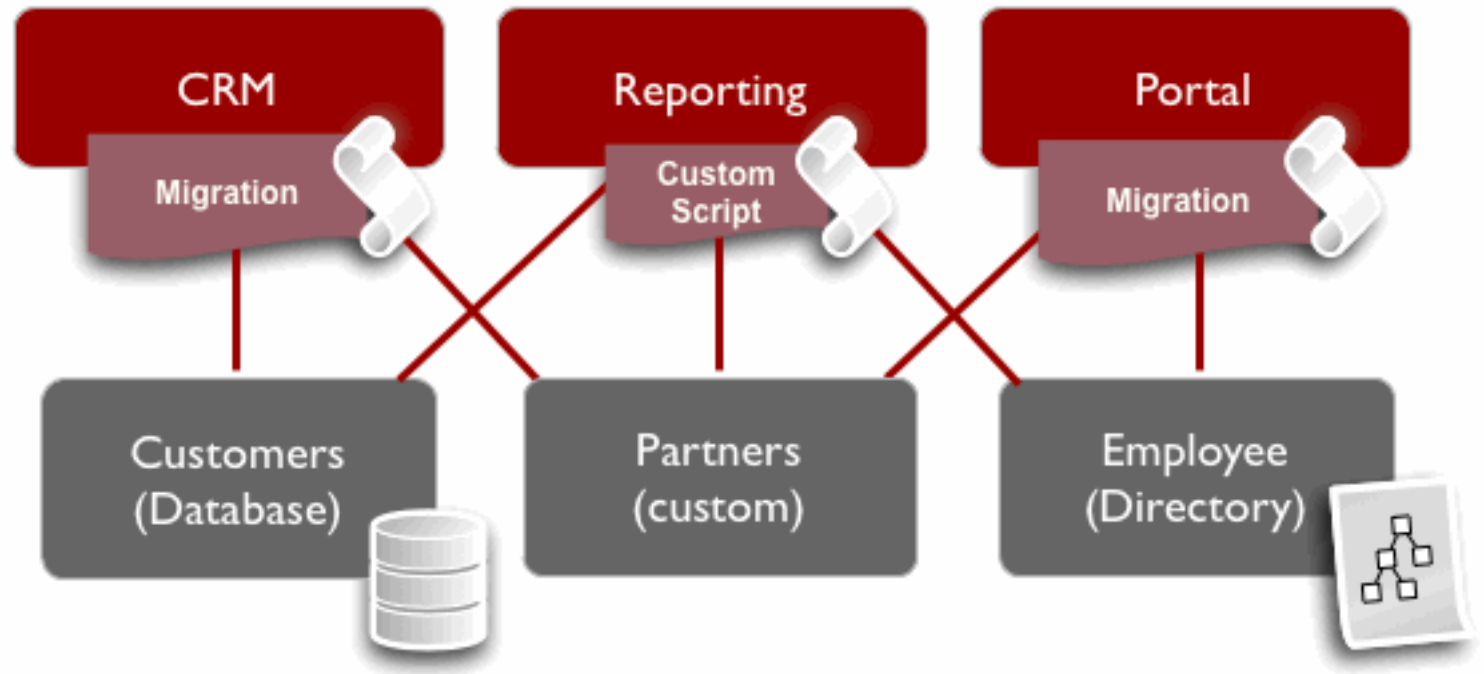


## **1 Connect:**

Connect to your existing  
data sources, including  
Databases, Active  
Directories, Legacy and more

# BEFORE PENROSE

Enterprise Apps  
and Services



Identity Stores



## IDENTITY SILOS GALORE

Enterprise Apps  
and Services

CRM

Reporting

Portal



**PENROSE Solutions:**  
remove multiple user profiles migration and  
application custom scripts

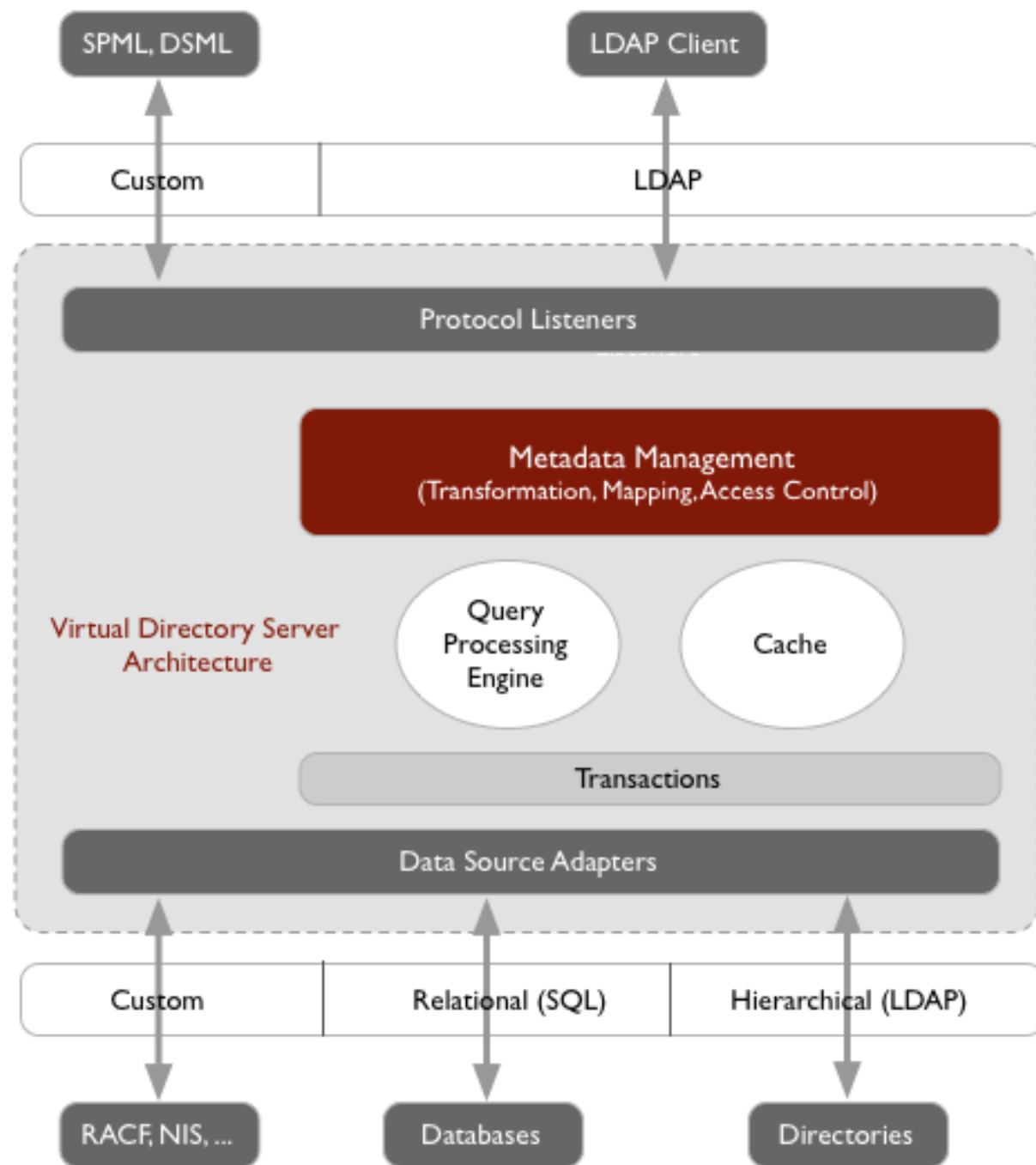
Identity Stores

Employee  
(LDAP)

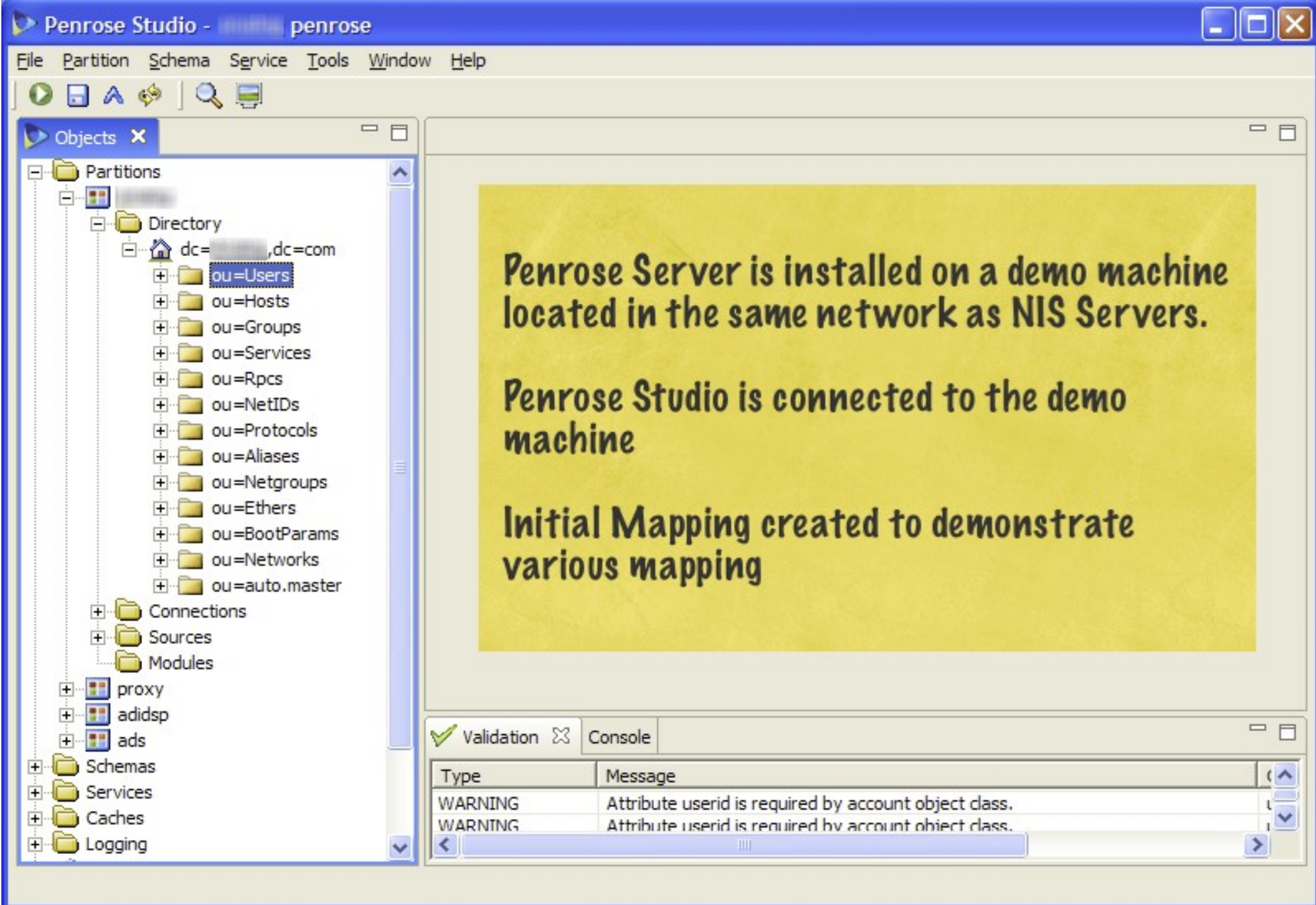
Customers  
(database)

Partners  
(custom)

VIRTUALIZE IDENTITY SILOS



```
SecureCRT
File Edit View Options Transfer Script Tools Window Help
root@radius:~# ypcat -k passwd | more
oraikhman oraikhman:##oraikhman:16522:11650:REMOVEDOleg Raikhman:/home/oraikhman:/usr/local/bin/tcsh
ilguest3 ilguest3:##ilguest3:16651:11650:REMOVEDGuest User 3:/home/ilguest3/cpd/misc/bin/tcsh
sorlema sorlema:##sorlema:18406:11130:REMOVEDScott Orleman:/home/sorlema/cpd/misc/bin/tcsh
rchary rchary:##rchary:18174:11130:Ramdas Chary:/home/rchary/cpd/misc/bin/tcsh
nteris nteris:##nteris:18221:11130:Matthew Teris:/home/nteris/cpd/misc/bin/tcsh
billr billr:##billr:16581:12040:REMOVEDBill Rogers:/home/billr/cpd/misc/bin/tcsh
byee byee:##byee:16545:11130:REMOVEDBing H. Yee:/home/byee/cpd/misc/bin/tcsh
conliffe conliffe:##conliffe:16377:11130:REMOVEDNigel Conliffe:/home/conliffe/bin/csh
nrajesh nrajesh:##nrajesh:18390:18512:rajesh.nahapatra:/home/nrajesh/cpd/misc/bin/tcsh
aalperi aalperi:##aalperi:18326:11130:Arthur Alperin:/home/aalperi/cpd/misc/bin/tcsh
psilla psilla:##psilla:18287:11080:Paul Silla:/home/psilla/cpd/misc/bin/tcsh
pgopal pgopal:##pgopal:18918:18511:REMOVEDPutrevu Gopal Trainee:/home/pgopal/cpd/misc/bin/tcsh
kkj kkj:##kkj:18720:18516:Kaushal.Jha Kumar:/home/kkj/cpd/misc/bin/tcsh
ids ids:##ids:5000:20:IDS:/usr/ids/diag:/usr/ids/diag/ids_login
aes aes:##aes:11068:11010:REMOVEDAnne Mascarini:/usr/aes/bin/csh
operator operator:##operator:671:1:REMOVEDTemplate for Operator Acct:/home/boris_s/operator/bin/csh
dmeleedy dmeleedy:##dmeleedy:16314:5:David Meleedy:/home/dmeleedy/cpd/misc/bin/tcsh
jfarley jfarley:##jfarley:16282:11100:REMOVEDjfarley:/usr/jfarley/bin/csh
jcleary jcleary:##jcleary:40419:18516:John.Cleary ASC-advdesign:/home/jcleary/cpd/misc/bin/tcsh
golivad golivad:##golivad:18241:11130:Giuseppe Olivadoti:/home/golivad/cpd/misc/bin/tcsh
lchang lchang:##lchang:16584:11030:REMOVEDLuke Chang:/home/lchang/cpd/misc/bin/tcsh
kverma kverma:##kverma:11280:18510:REMOVEDKrishna.Verma DSPHW Trainee,BITS:/home/kverma/cpd/misc/bin/tcsh
ggoel ggoel:##ggoel:11207:18516:Gaurav .Goel:/home/ggoel/cpd/misc/bin/tcsh
rlr rlr:##rlr:11079:11130:Russell Rivin:/home/rlr/bash
glavoch glavoch:##glavoch:18745:11650:REMOVEDGilad Lavochkin:/home/glavoch/cpd/misc/bin/tcsh
mixed mixed:##mixed:11056:11100:Mixed Signal Group Account:/home/mixed/bin/csh
kfang kfang:##kfang:18913:11130:Ken.Fang:/home/kfang/cpd/misc/bin/tcsh
sto sto:##sto:13018:11130:Stephen To:/home/sto/cpd/misc/bin/tcsh
nmuppala nmuppala:##nmuppala:11214:18510:REMOVEDRadhika.Muppala BITS-Trainee(DSP):/home/nmuppala/cpd/misc/bin/tcsh
hfarzam hfarzam:##hfarzam:13014:11130:Hamed Issa-Farzam:/home/hfarzam/cpd/misc/bin/tcsh
chulme chulme:##chulme:11160:11010:REMOVEDChristine Hulme:/home/chulme/bin/csh
agoh agoh:##agoh:18214:11115:Annie Goh:/home/agoh/cpd/misc/bin/tcsh
vaguest vaguest:##vaguest:18103:11703:Vancouver Guest:/home/vaguest/cpd/misc/bin/tcsh
sgimpel sgimpel:##sgimpel:18590:11650:REMOVEDShirly Gimpel:/home/sgimpel/cpd/misc/bin/tcsh
--More--
Ready ssh2: AES-128 38, 9 38 Rows, 100 Cols VT100
```



Servers Welcome NIS LDAP - ace Identity Linking - ace

## Identity Linking

**Local**

Base:  Browse

Filter:

Scope:  Search

DN	Status
ou=Users,ou=ace,ou=nis,dc=...,dc=com	Not Found
uid=hitchcox,ou=Users,ou=ace,ou=nis,dc=...	Not Found
uid=lansley,ou=Users,ou=ace,ou=nis,dc=...	1 Match
uid=cricket,ou=Users,ou=ace,ou=nis,dc=...	Not Found
uid=bmillis,ou=Users,ou=ace,ou=nis,dc=a...	1 Match
uid=watson,ou=Users,ou=ace,ou=nis,dc=...	1 Match
uid=hsnusr,ou=Users,ou=ace,ou=nis,dc=...	Not Found
uid=evans,ou=Users,ou=ace,ou=nis,dc=a...	1 Match
uid=smtp,ou=Users,ou=ace,ou=nis,dc=an...	Not Found
uid=eoin,ou=Users,ou=ace,ou=nis,dc=an...	Not Found
uid=adm,ou=Users,ou=ace,ou=nis,dc=an...	Not Found
uid=prmltusr,ou=Users,ou=ace,ou=nis,dc...	Not Found
uid=mcintosh,ou=Users,ou=ace,ou=nis,dc...	Not Found
uid=lsmithr,ou=Users,ou=ace,ou=nis,dc...	Not Found
uid=patrick,ou=Users,ou=ace,ou=nis,dc=...	1 Match
uid=brewer,ou=Users,ou=ace,ou=nis,dc=...	Not Found

Attribute	Value
cn	bob.lansley
gecos	bob.lansley
gidNumber	100
homeDirectory	/home/lansley
loginShell	/bin/tcsh
objectClass	account
objectClass	posixAccount
objectClass	shadowAccount
objectClass	top
uid	lansley
uidNumber	26003
userPassword	7b63727970747d426a307132736c3...

**Global**

Base:  Browse

Filter:

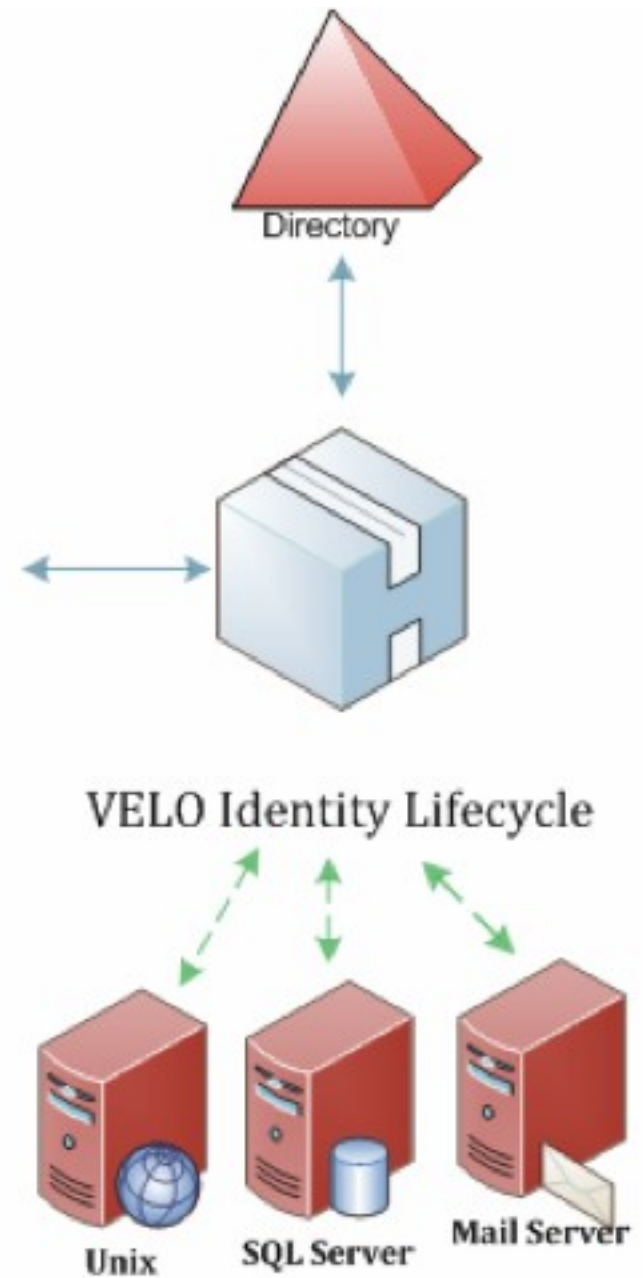
Scope:  Search

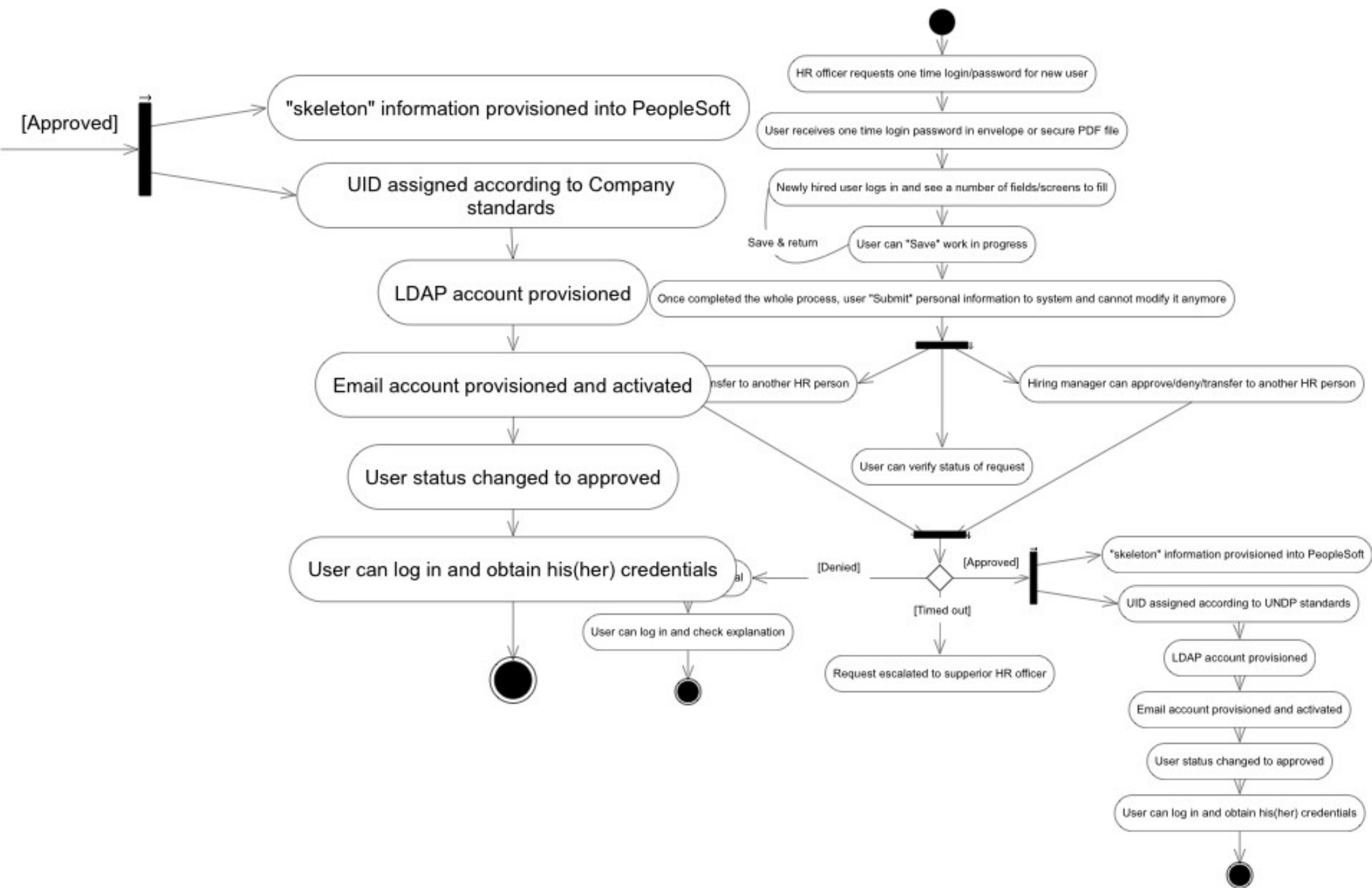
DN
uid=lansley,ou=Users,ou=global,dc=...,dc=com

Attribute	Value
cn	Bob.Lansley
gecos	Bob.Lansley
gidNumber	100
homeDirectory	/home/lansley
loginShell	/bin/tcsh
objectClass	account
objectClass	posixAccount
objectClass	shadowAccount
objectClass	top
objectClass	extensibleObject
seeAlso	uid=lansley,ou=Users,ou=ads,ou=...
uid	lansley
uidNumber	54
userPassword	7b63727970747d64396d385a6f753...

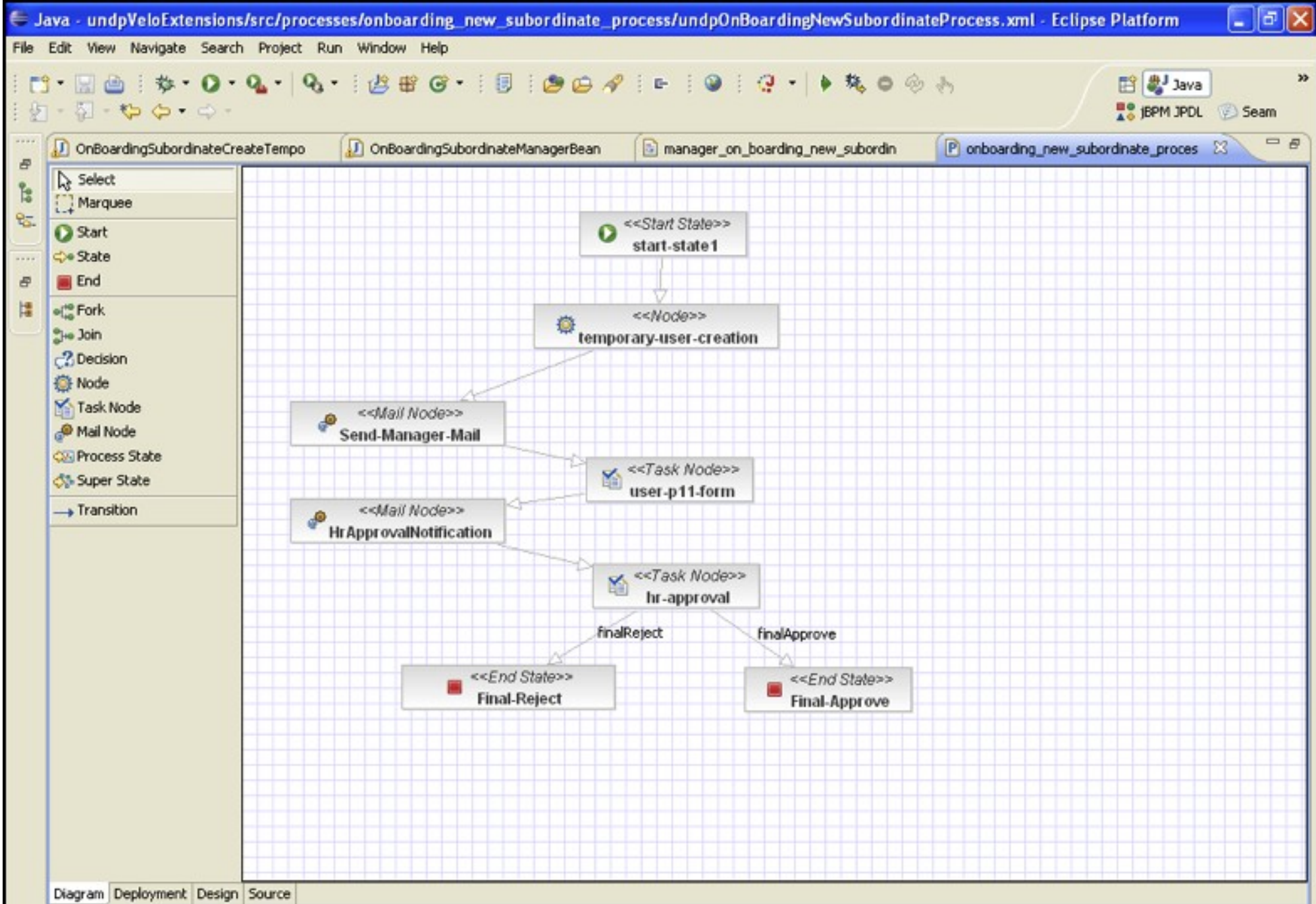
# REDHAT VELO

- OSS User Provisioning Server
- RBAC
- Maps biz processes and multiple level of approvals
- Do complex provisioning ops
- Self Services: Password Reset, etc.
- Runs on Jboss AS, JBPM, SEAM





# ONBOARDING WORKFLOW



DEVELOPMENT ENVIRONMENT

Velo - An open Source Identity Management Solution.

Velo Server v1.1

- Resources
- Identities
- Workflow
- Access
- Reconciliation
- Tasks
- Requests
- Auditing
- Misc
- Password Sync
- Help

Welcome, admin

#### Last Failed Tasks

0 100 5

ID	Description	Status	Creation Date
<a href="#">133</a>	Add account name 'ADMIN' on resource 'OPEN_LDAP'	FATAL_ERROR	2007-12-09 01:11:51.0

#### Last Failed Requests

0 100 5

#### Last Approved Requests

0 100 5

ID	Notes	Creation Date
<a href="#">51</a>	Self Service access request	2007-11-01 11:16:52.0
<a href="#">45</a>	Self Service access request	2007-11-01 06:48:43.0

#### Last Requests Waiting for Approval

There are -101- request waiting for approval.

0 100 5

ID	Notes	Creation Date
<a href="#">151</a>	On Boarding new Subordinate request.	
<a href="#">150</a>	On Boarding new Subordinate request.	
<a href="#">149</a>	On Boarding new Subordinate request.	
<a href="#">148</a>	On Boarding new Subordinate request.	
<a href="#">147</a>	On Boarding new Subordinate request.	

# DISCUSSION PANEL

- Panel Introduction
- Lesson Learned
- Q&A

