



Red Hat Network Satellite in a Nutshell....

Clifford Perry
Development Lead,
Red Hat Inc.

Todd Sanders
Director,
Red Hat Inc.

Justin Sherrill
Software Engineer,
Red Hat Inc.

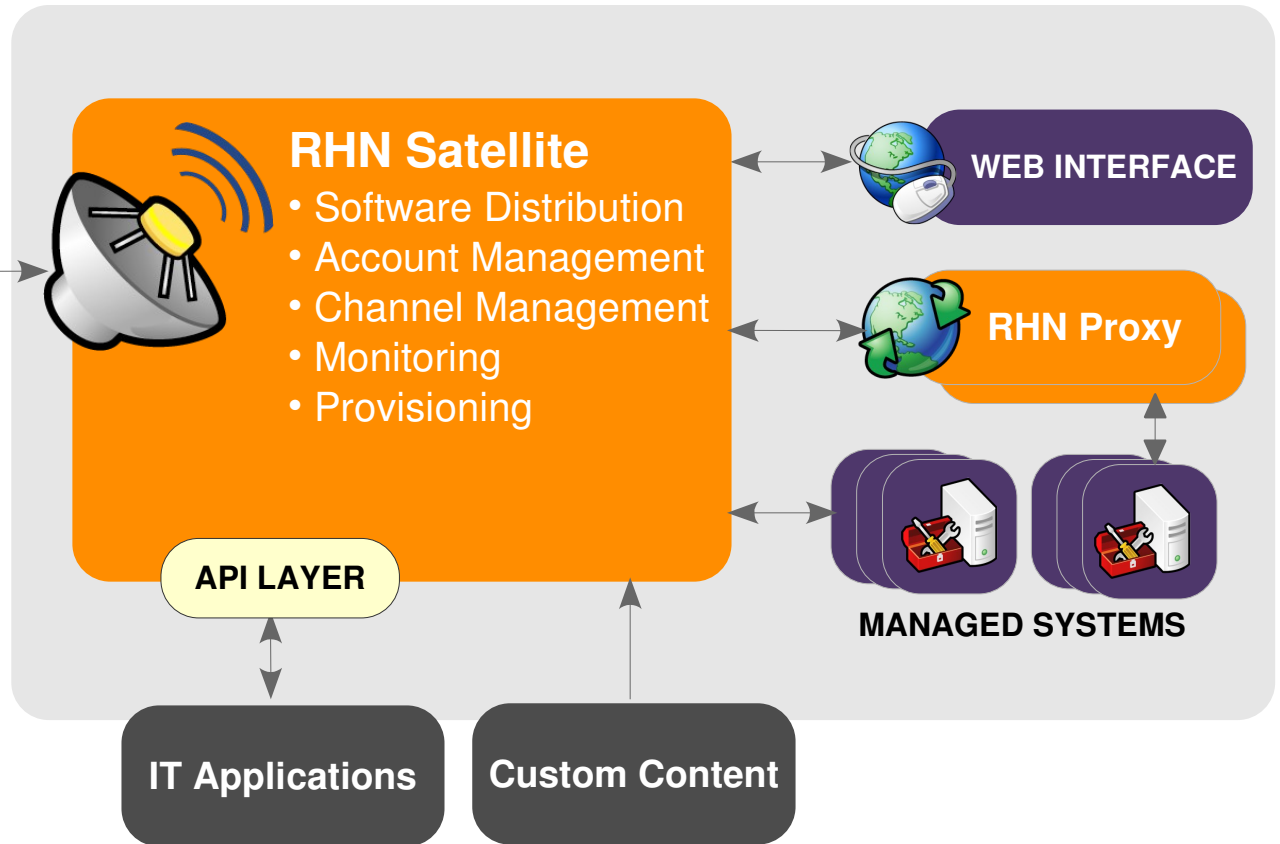
What is RHN Satellite?

A systems management platform designed to provide complete lifecycle management of the operating system and applications.

- Inventory your systems (hardware & software information)
- Install and update software on your systems
- Collect and distribute custom software packages
- Provision (Kickstart) your systems
- Manage and deploy configuration files
- Monitor your systems
- Provision/Manage virtual guests



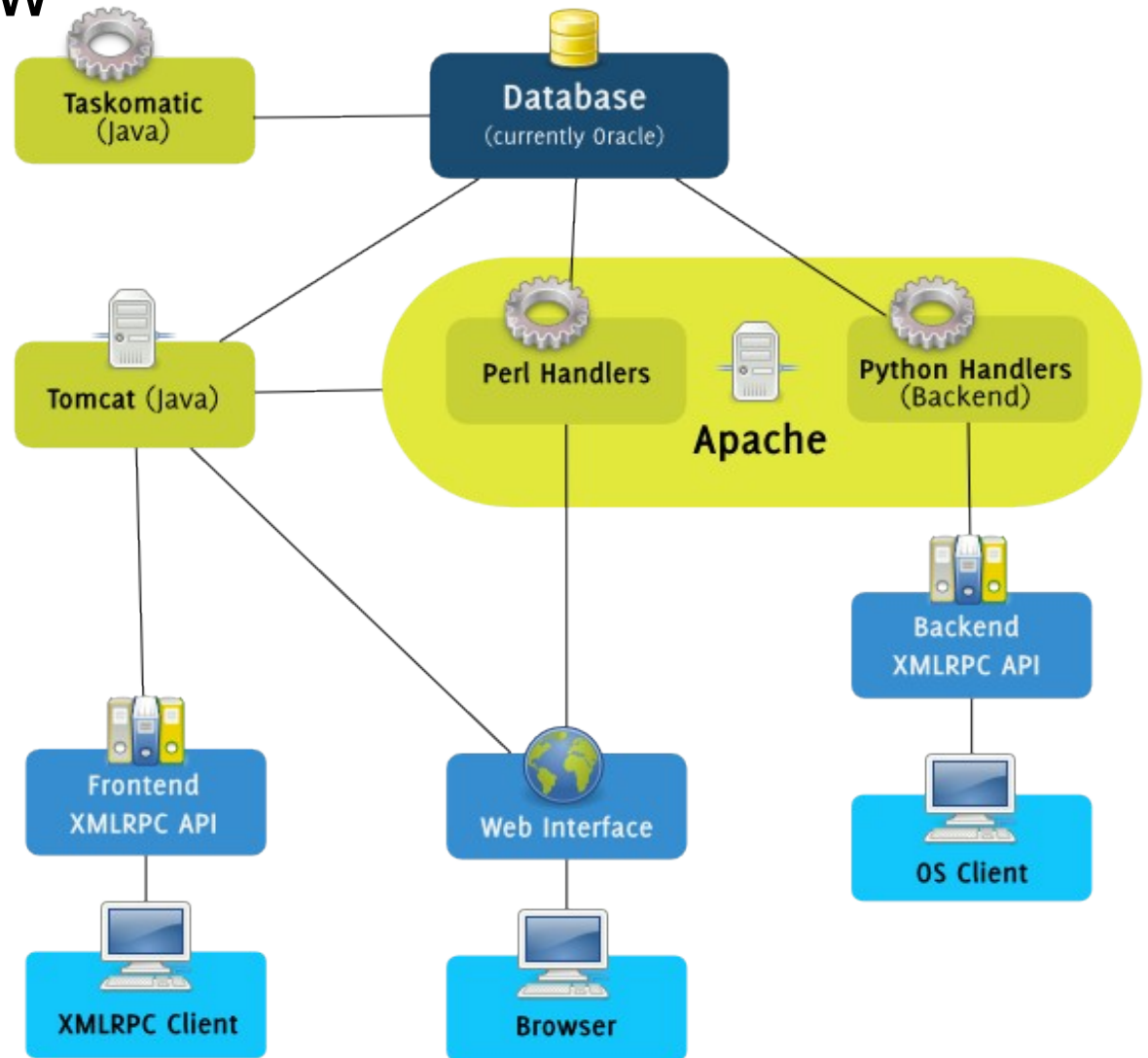
Satellite Deployment



- Local database stores all packages, profiles, and system information
- Syncs content from RHN Hosted
- Custom content distribution
- Can run disconnected from the Internet

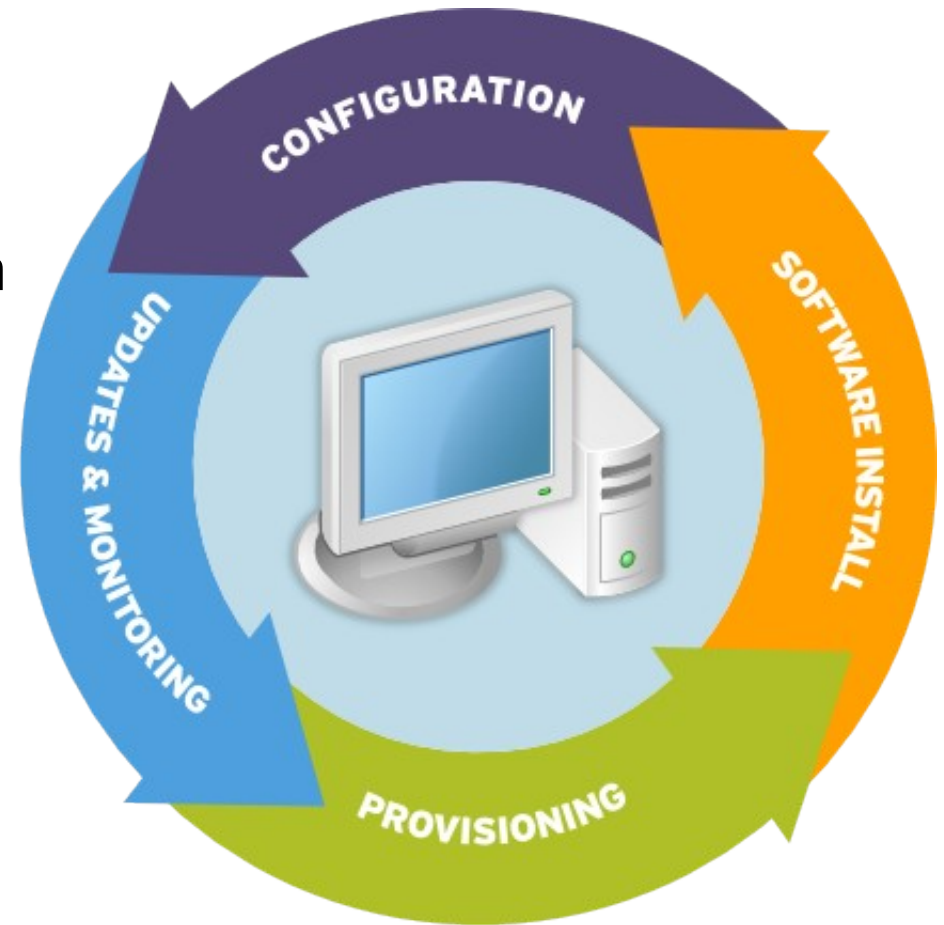
Architecture Overview

- Frontend Web Interface
 - for client utilities
- Backend Api
 - for client utilities
- Taskomatic
 - for scheduled tasks
- Frontend API
 - for scripting and integration
- All connect to an Oracle DB
 - Embedded
 - External



Life Cycle of a System

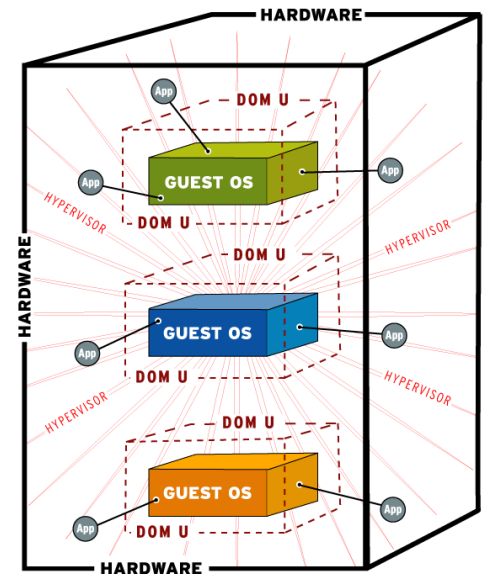
- Provision a new system (on hardware or virt)
- Install software/updates
- Configure software
- Continued management of system
- Re-provision for a new purpose



How can I provision a new virtual machine?

Satellite v5.0 introduced virt provisioning and management:

- Provisioning
 - Creation and kickstart of virtualized guests on host systems
- Management
 - Software updates (RHSA & RHBA) for virtualized guests
 - Instant Actions – Start, Stop, Pause, Resume
 - Real-time update of Max memory and # of VCPUs
- Monitoring
 - VM's state, CPU utilization, memory util, & disk space
- API Support
- Demo



How can I manage my custom software?

- Create custom channels
- Allows control over latest software a system can install
- Store custom software within custom channels
- Easily install/update/remove packages from web interface
- Demo



How can I configure my software?

- Built in configuration management
- Rank configuration channels based on priority
- Can be deployed at provisioning/registration time
- Local overrides for individual systems
- Supports multiple revisions of files/directories
- Import existing files from systems
- Diff configuration files between actual and stored revisions
- Demo



How can I manage these systems across my organizations?

- Multiple Organizations feature new in Satellite 5.1
- Completely separate content and systems
- Manage entitlements across organizations
- Restrict entitlement usage
- Upcoming features
 - Custom Channel Sharing between orgs
 - Migrate registered systems between orgs
- Demo

Check out the MultiOrg Best Practices Whitepaper:

https://www.redhat.com/f/pdf/rhn/Multiorg-whitepaper_final.pdf

Road Map

■ v5.2

- Oracle 10g (embedded & external)
- Satellite/Proxy on Red Hat Enterprise Linux 5.x

■ v6.0

- Reporting (integration with Jasper Reports)
- Support User (Read-Only)
- Multi-Org (Phase II) – Content Sharing, System Migration, APIs
- Inter-Satellite Sync II (direct via sat-sync)
- Solaris hardware support - x86_64 & sun4v
- Search Improvements (errata, systems, users, and documentation)
- Delta RPMs Support
- Cobbler/Koan Integration

Questions



Spacewalk

- Upstream open source project
- Satellite will pull from Spacewalk for future releases
- Visit website <http://spacewalk.redhat.com>
- Wiki available at <https://fedorahosted.org/spacewalk>
 - #spacewalk on FreeNode

For more information please attend the Spacewalk Campground, scheduled for Thursday @ 3pm at the back of the Exhibition Hall.

Backup Slides

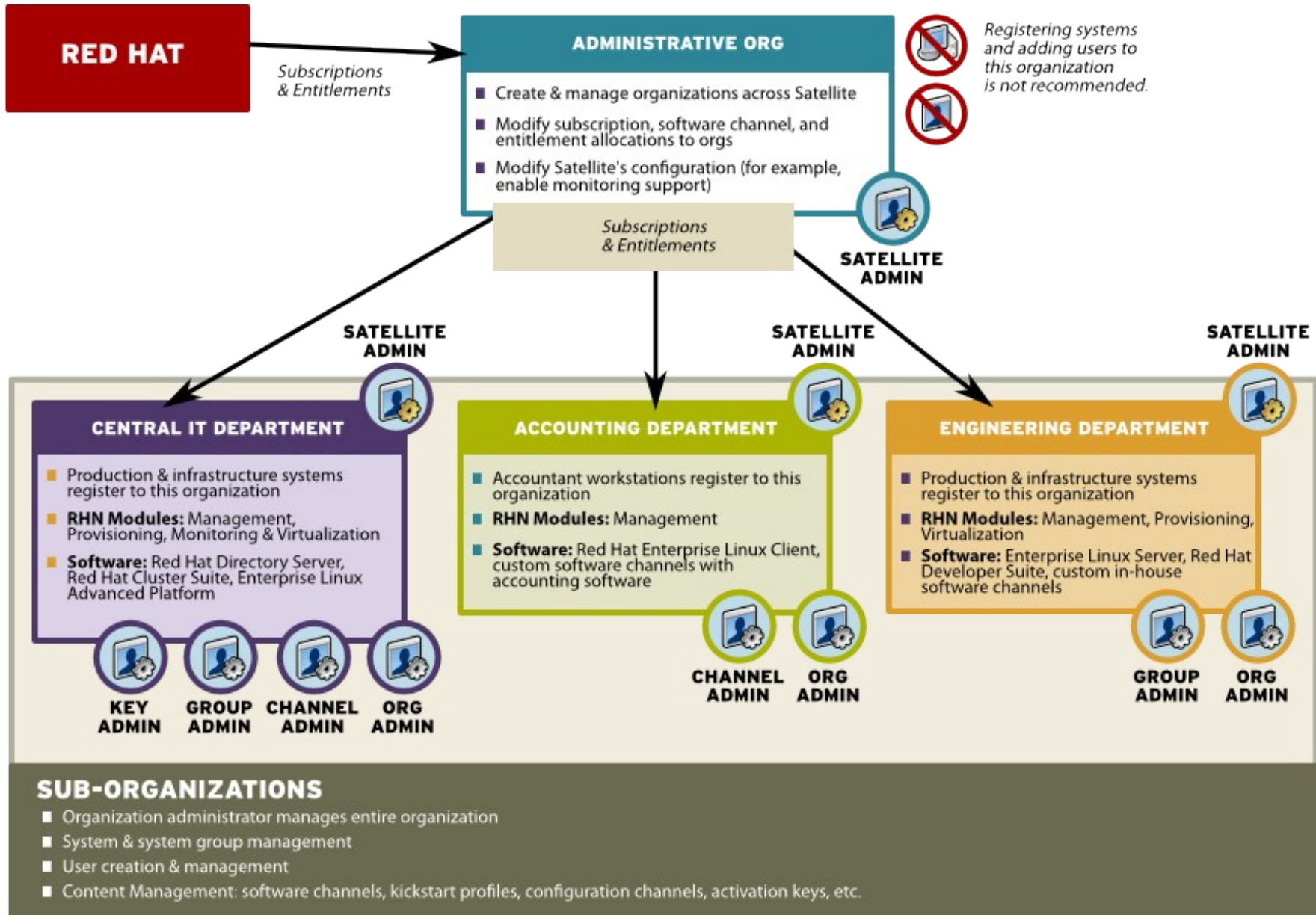
Satellite v5.0 Features

- Virtualization management
- Updated configuration management
- Support for RHEL5 Clients (yum)

Satellite v5.1 Features

- Multi-org
- API Enhancements (more than doubled)
- UI Enhancements (Improved Package Search)
- Support for more platforms. Now runs on:
 - x86
 - x86_64
 - s390
 - S390x
- PPC provisioning
- Extended Update Support

Centrally-Managed, Multi-Department Satellite



Vendor-to-Third-Party-Customers Satellite

