



RED HAT  
**FORUM**  
Europe, Middle East & Africa



# Modern Application Integration in the era of cloud

Jiří Kolář

Red Hat Solution Architect  
CZ/SK/CEE

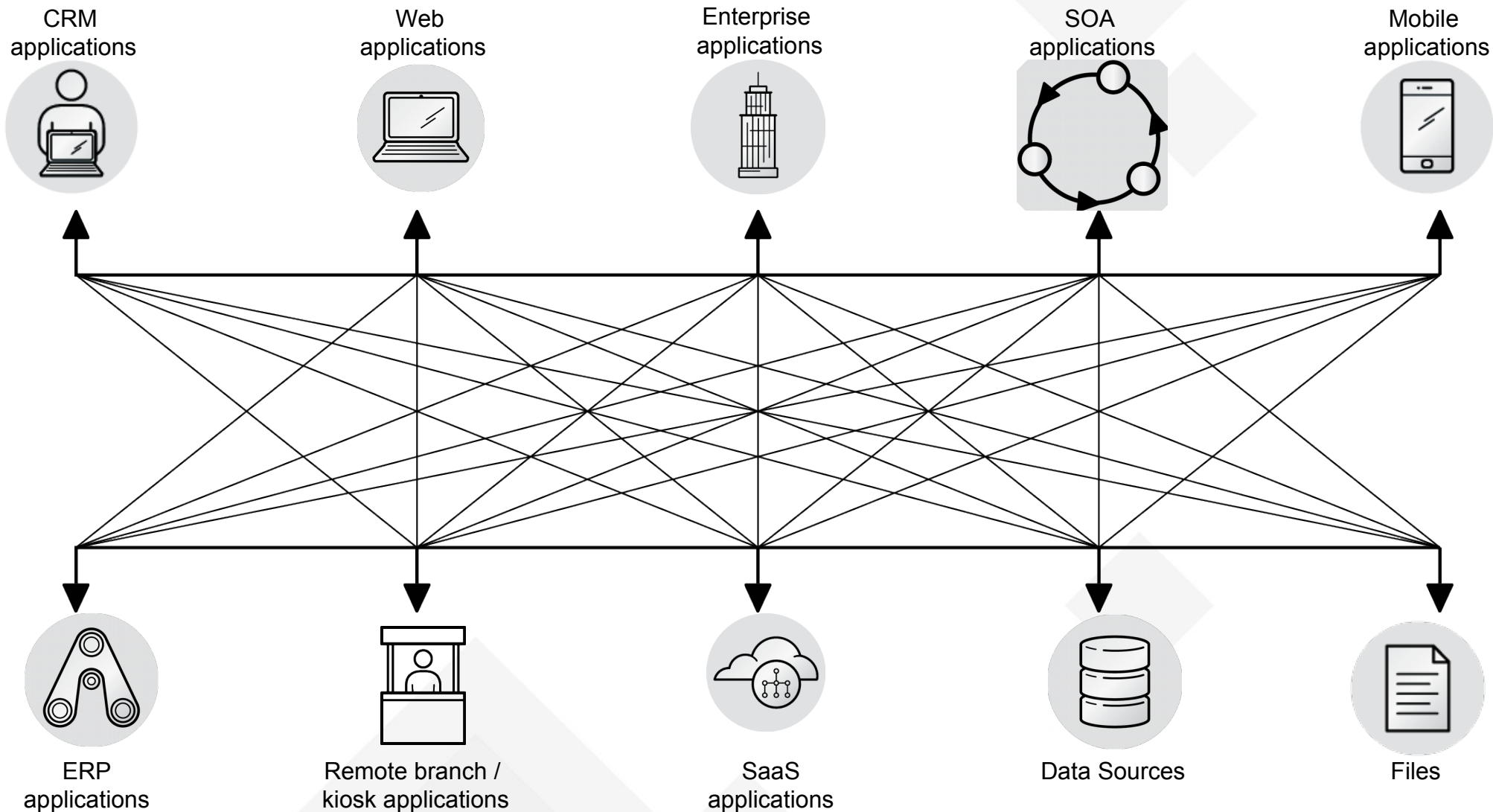


RED HAT  
**FORUM**  
Europe, Middle East & Africa



# Integration problem?

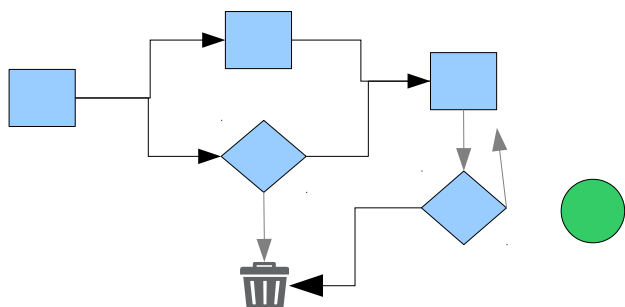
# The integration challenge



# TWO MAJOR INTEGRATION TYPES

## Application Integration

Enable integration of end-to-end business processes across multiple applications

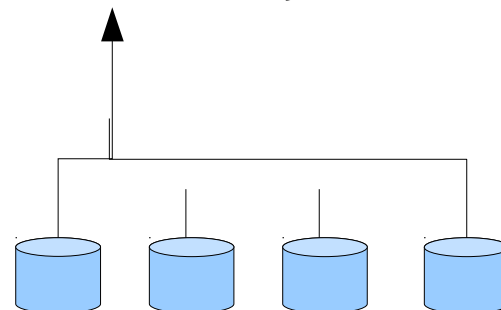


### Why?

Accelerate development of integrated systems.

## Data Integration

Enable access to data from disparate systems for a combined, consistent view across the organization



### Why?

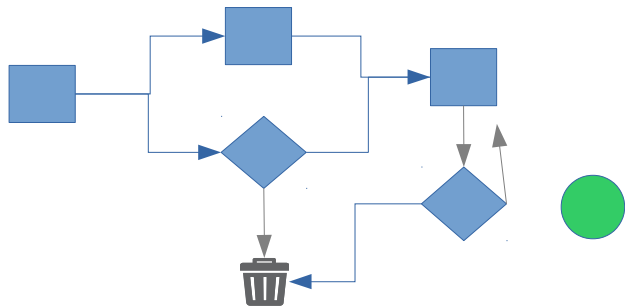
Gain insight, improve business decisions, accelerate development of business intelligence systems.

**DIFFERENT - BUT COMPREHENSIVE SOLUTIONS REQUIRE BOTH**

# TWO MAJOR INTEGRATION TYPES

## Application Integration

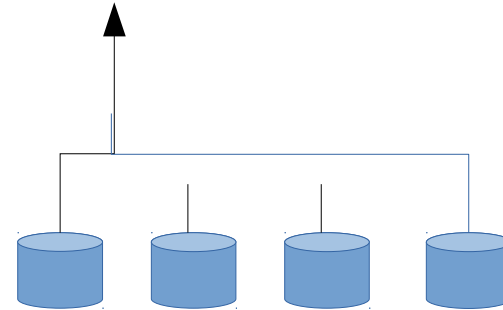
Enable integration of end-to-end business processes across multiple applications



Create & connect API's - App Services

## Data Integration


Enable access to data from disparate systems for a combined, consistent view across the organization




Create API's - Data Services

Enable and Facilitate

  
API Management &  
Collaboration

  
Mobile Integration &  
Enablement

  
IoT Integration

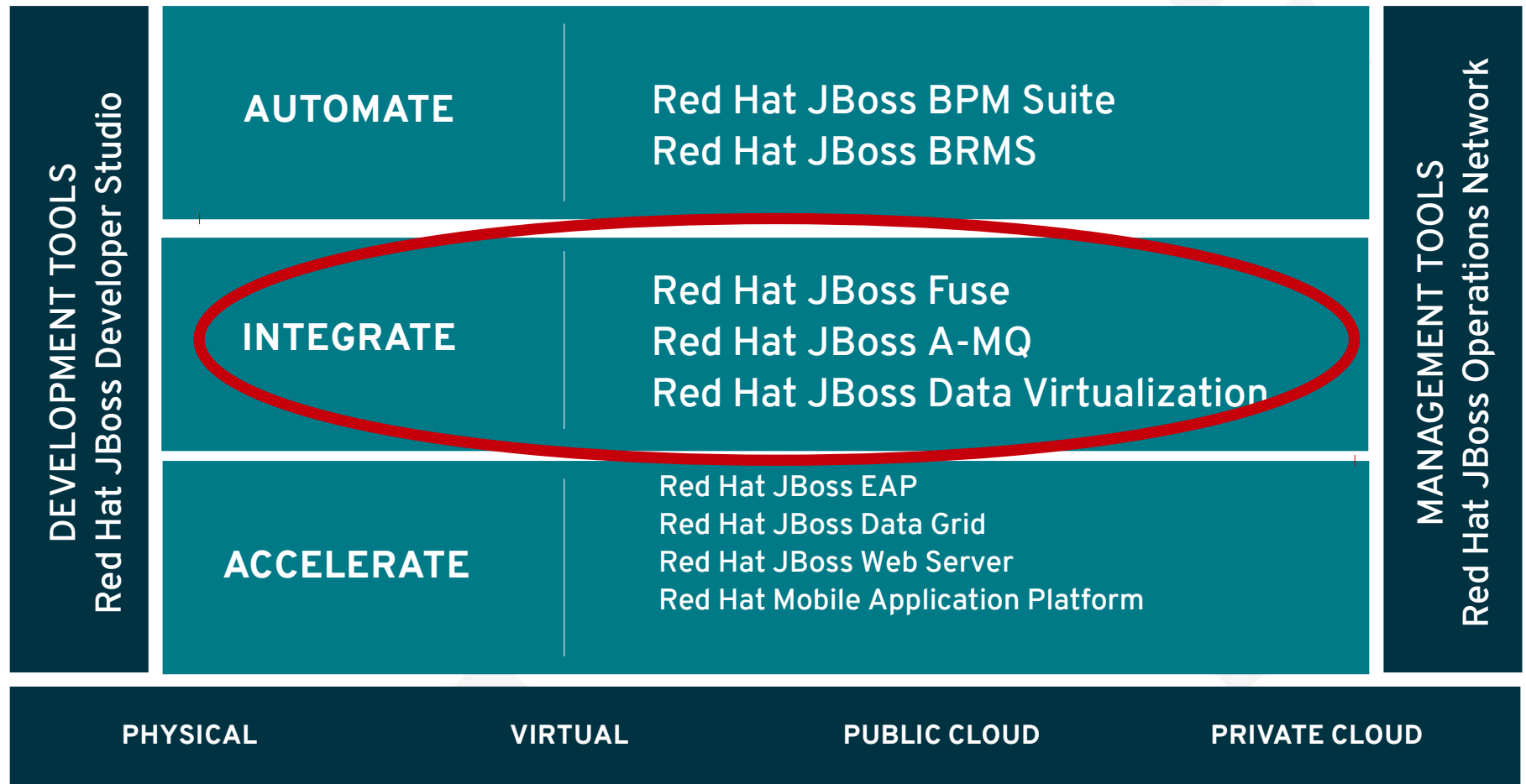


RED HAT  
**FORUM**  
Europe, Middle East & Africa



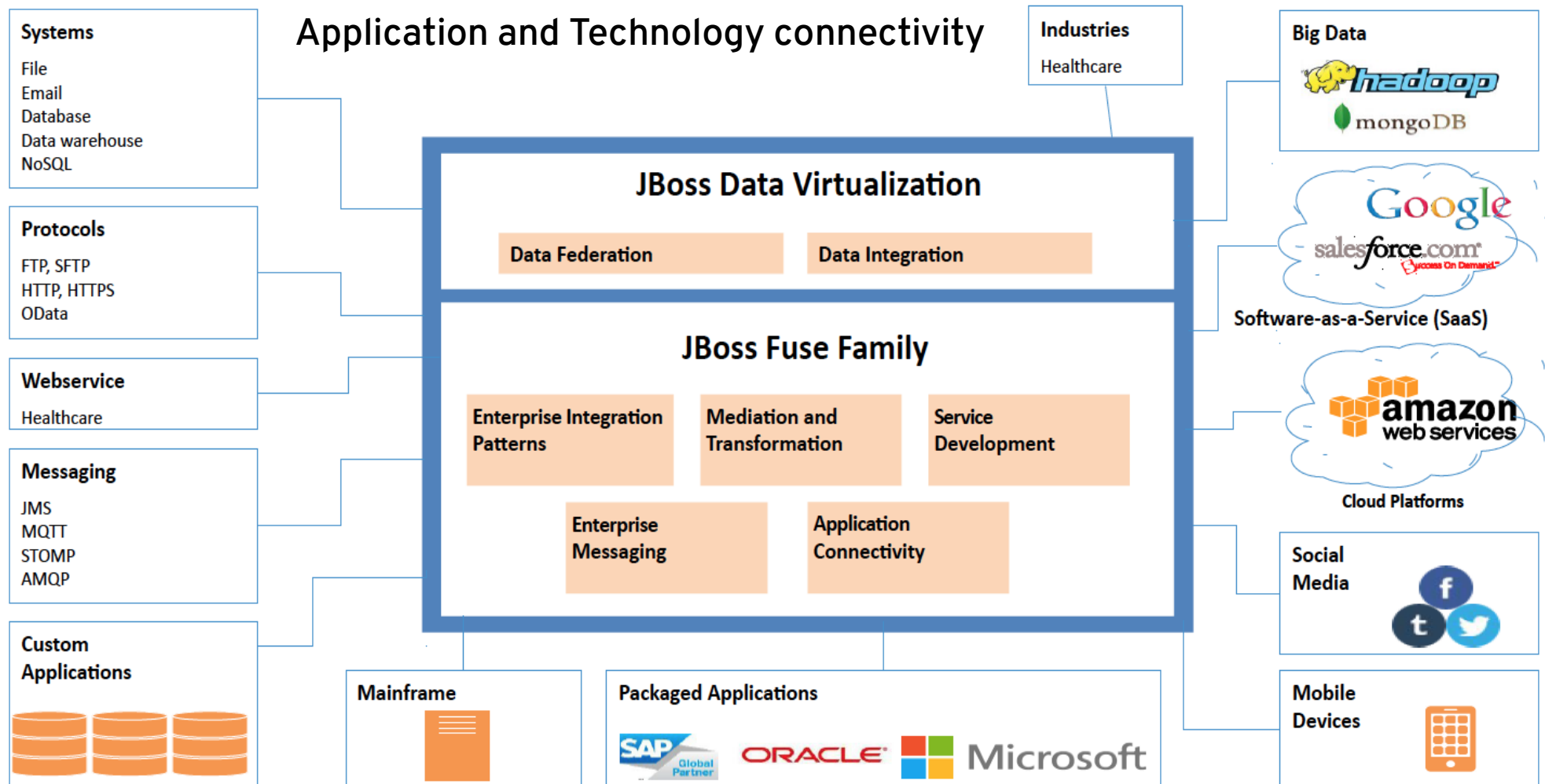
# Red Hat's integration platform?

# RED HAT JBOSS MIDDLEWARE



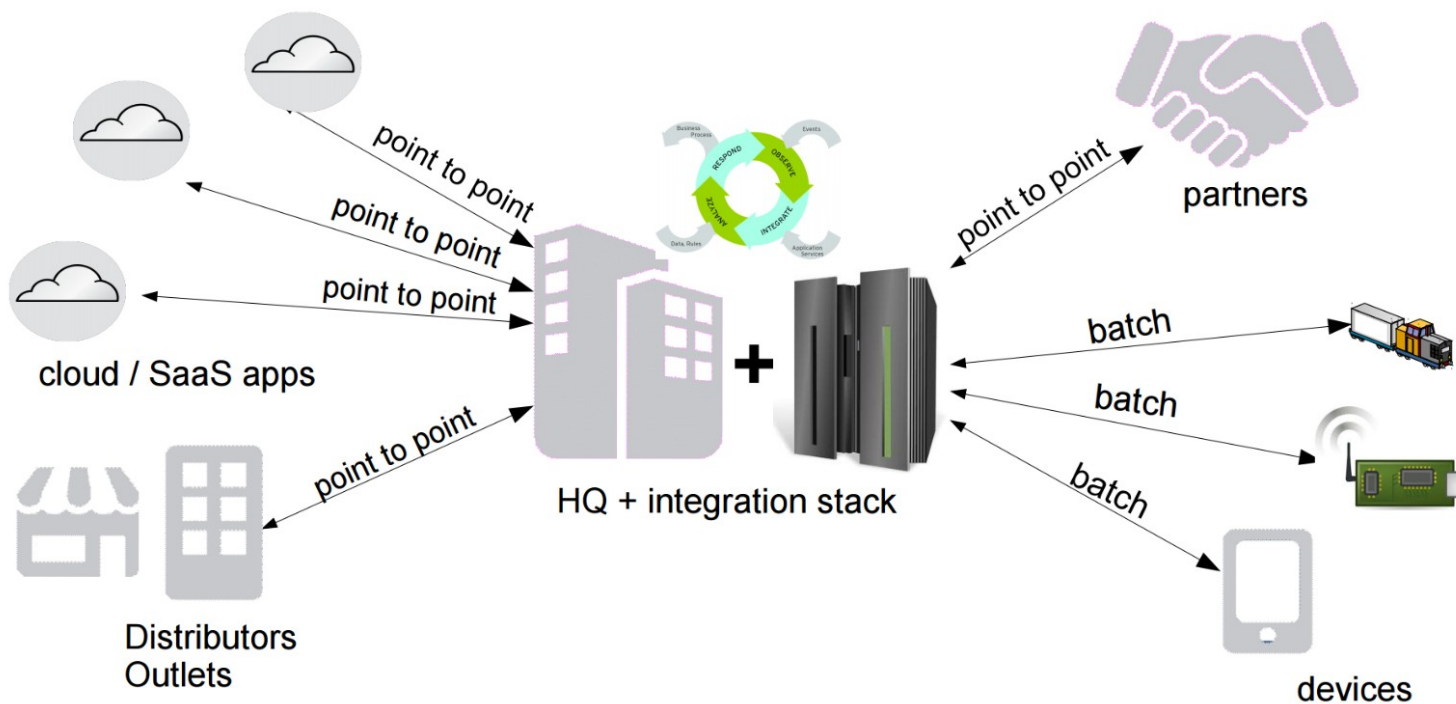
# INTEGRATE

Connect systems, applications, and data across your entire enterprise.



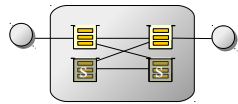
# JBoss FUSE summary

- Lightweight integration platform / ESB
  - Cover most recent trends in integration
- Include matured de-facto standard technologies
  - Similar products:
- IBM Websphere ESB, Oracle ESB, Mule ESB ...



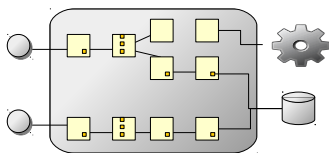
# Fuse – Use Cases

Messaging Platform



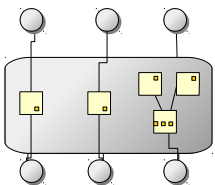
**Fuse as asynchronous messaging platform:**  
Hub/Spoke connectivity is not a given Guaranteed Delivery, Scalable, High Throughput

Integration platform



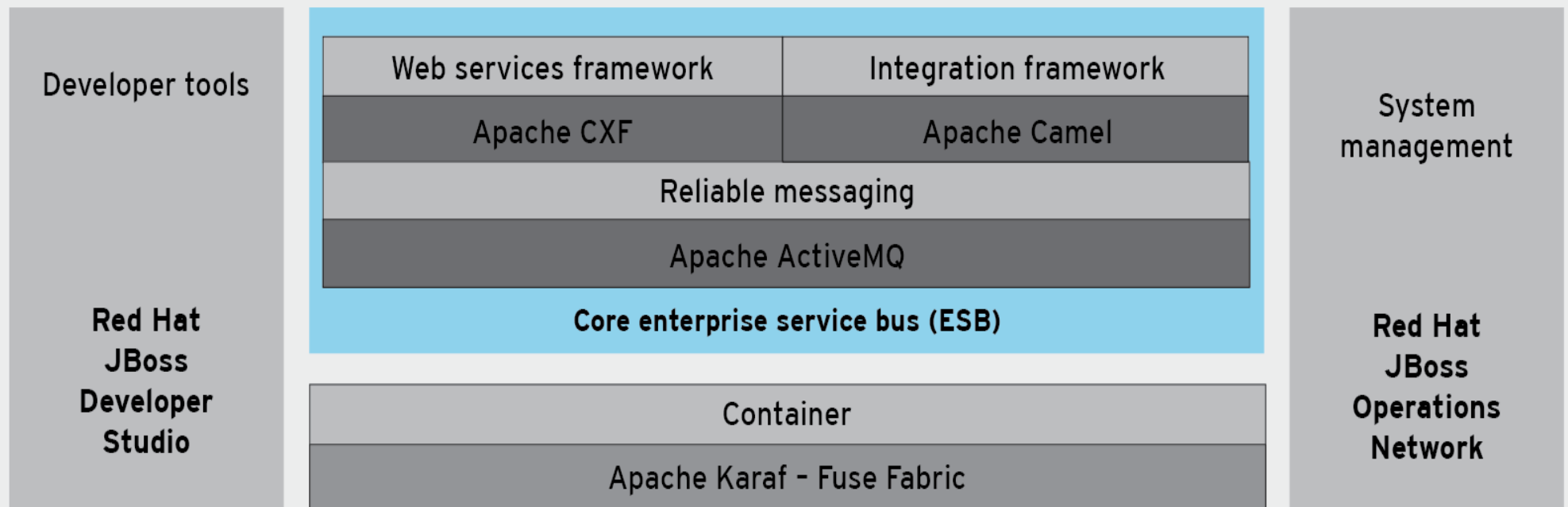
**Fuse as a core integration component:**  
API Platform , Services Gateway,  
Low-level integration, IoT ..

ESB



**Fuse as an Enterprise ESB:**  
Build ESB integration scenario, great with BPM ..  
Establish more control over internal systems and stop expensive P2P integration developments

# RED HAT JBOSS FUSE



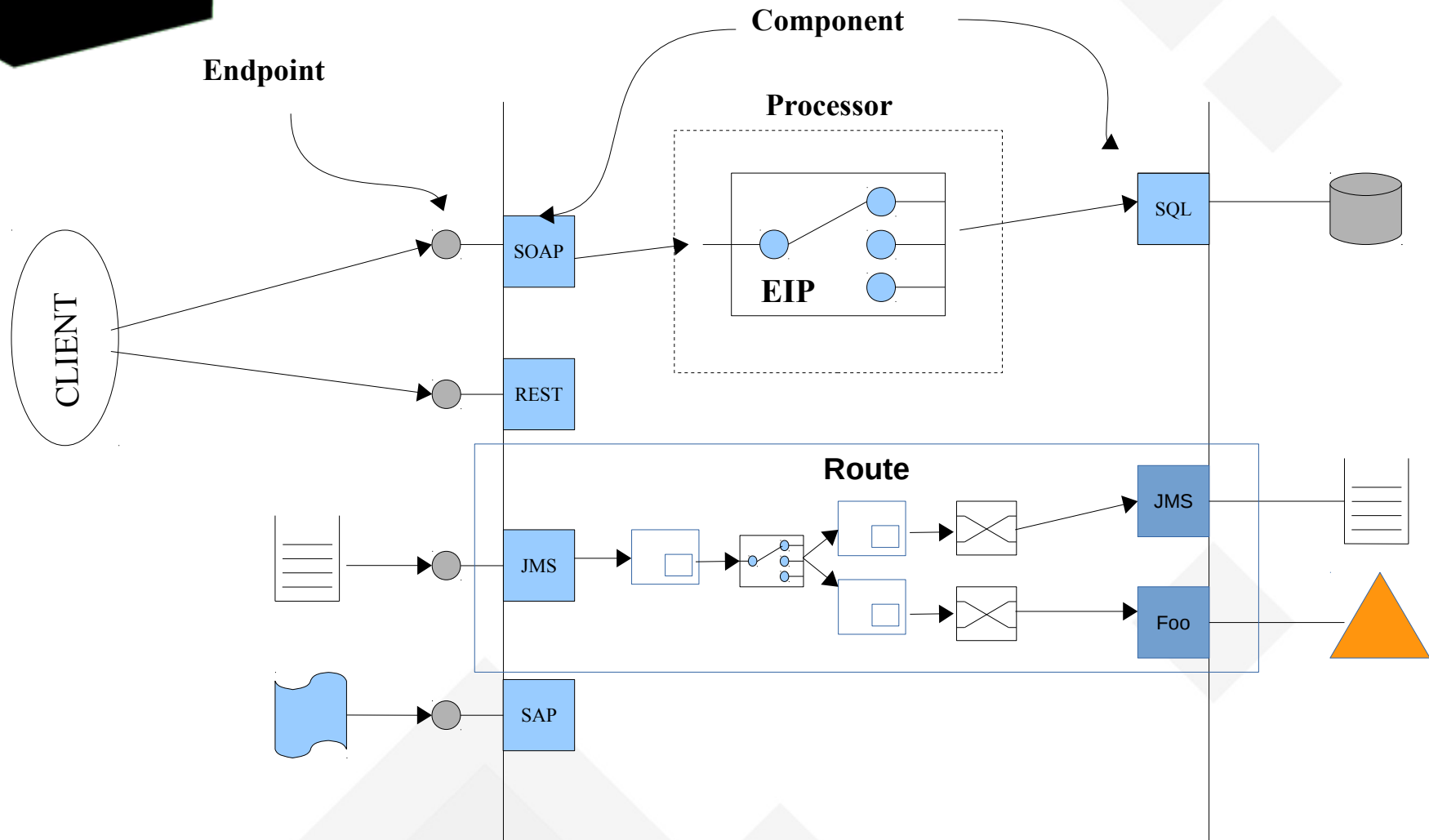
## New in 6.2.1

- Merge with Fuse Service Works, SwitchYard etc included, EAP entitlement included!
- Ubiquitous connectivity 150+ connectors (SalesForce, SAP, Social, cloud integration)
- Unified management console which leverages Fuse Fabric
- Improved High Availability (shared-nothing configuration, LevelDB: dev-preview)
- Integration in the Cloud (OpenShift Cartridge) xPaaS ready

JB0011-S

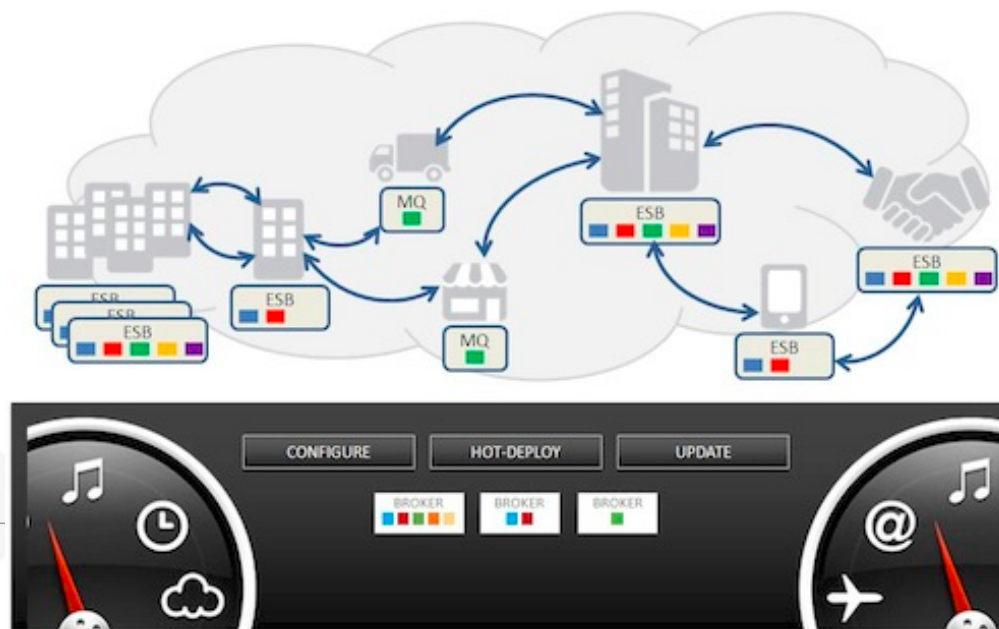


# Camel does all the „dirty job“



# Fuse Fabric

- Large scale hybrid deployments:
  - on premise local / remote / in cloud
- Endpoints can be:
  - Relocated/ load balanced / Elastic / highly available
- Distributed Configuration & Management
  - accessed across multiple domains / highly available
  - Elastic scaling of services / Resources Monitoring & control
- Hot upgrade & patching





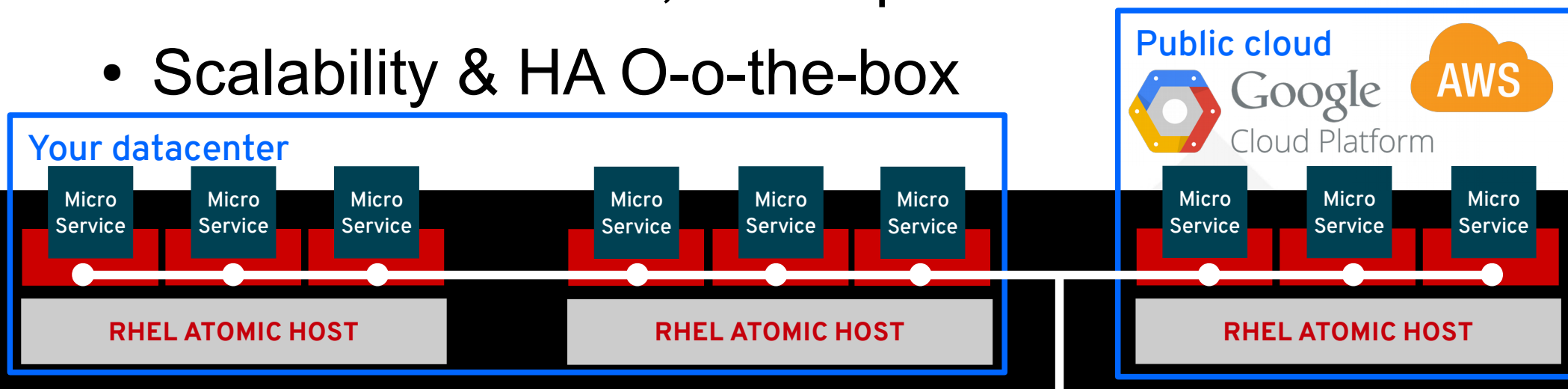
RED HAT  
**FORUM**  
Europe, Middle East & Africa



**But in PaaS we have  
containers, right?**

# PaaS: Openshift Container Platform

- Automates whole container lifecycle
- On Premise / In cloud / Both (aka. Hybrid)
- Containers orchestration (Kubernetes)
- Microservices O-o-the-box
- CI/CD automation, Dev Ops
- Scalability & HA O-o-the-box





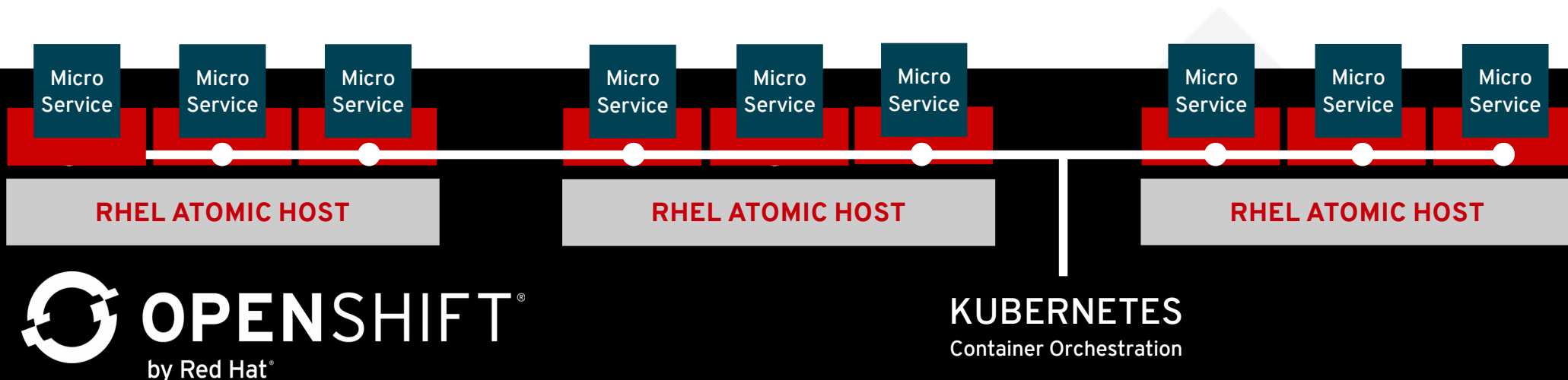
RED HAT  
**FORUM**  
Europe, Middle East & Africa



# Integration in PaaS, does it make sense?

# FUSE in Openshift PaaS

- Integration of applications within the PaaS
- Integrate On-premise and Public Cloud Apps
- Fully automated deployment
  - build & deployed by Openshift
  - managed by Kubernetes
- Microservices managed by the platform





RED HAT  
**FORUM**  
Europe, Middle East & Africa

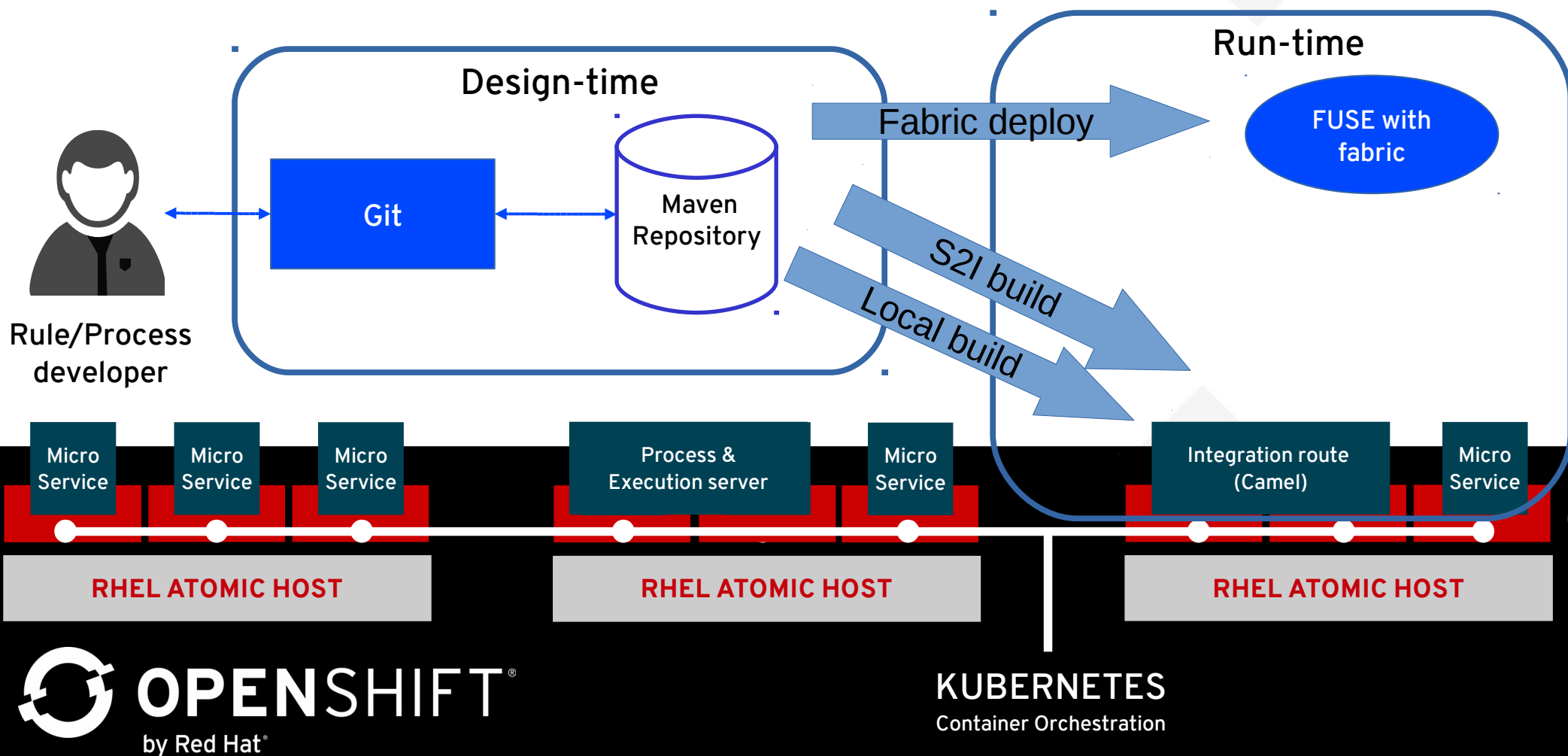


# And the deployment magic?

# FUSE: Openshift deployment

Fabric's job is done by Openshift / Kubernetes (Cattle approach is used)

- Build It, Push It (outside OpenShift) = Maven build & deploy the container
- Push It, Build It (inside OpenShift) = S2I template



## The Red Hat vision:

- ✓ Modular microservices
- ✓ Based on JBoss Middleware
- ✓ Running in OpenShift

**RED HAT® JBOSS®  
FUSE**

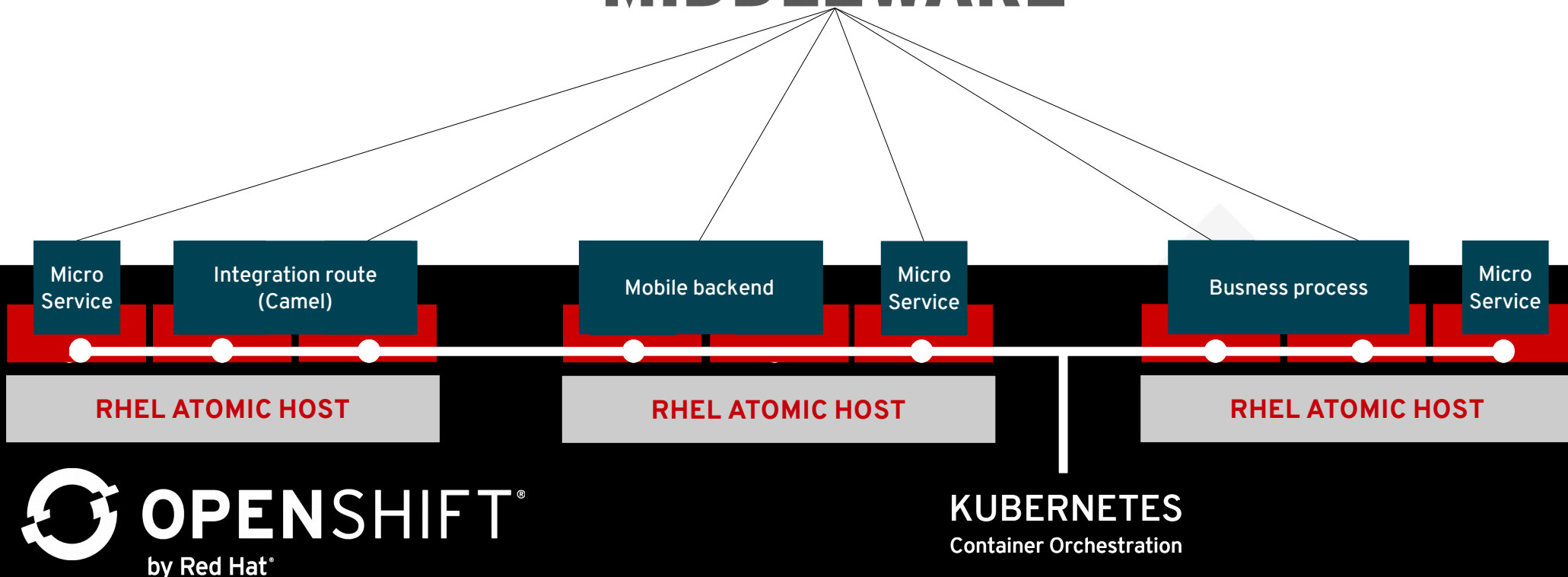
**RED HAT® JBOSS®  
ENTERPRISE  
APPLICATION PLATFORM**

**RED HAT® JBOSS®  
BPM SUITE**

**RED HAT® JBOSS®  
MIDDLEWARE**



**RED HAT®  
MOBILE APPLICATION  
PLATFORM**





redhat.®



RED HAT  
**FORUM**  
Europe, Middle East & Africa



# THE FUTURE OF YOUR BUSINESS

Presenter

Job title/Company

# CLICK TO ADD HEADLINE

- Click to add text

# CLICK TO ADD TITLE

- Click to add text



RED HAT  
**FORUM**  
Europe, Middle East & Africa



# DIVIDER



redhat.®