

# BASEFARM

---

What is continuous compliance?

Stefan Månsby <[stefan.mansby@basefarm.com](mailto:stefan.mansby@basefarm.com)>

VP Innovation

# EXCERPT

“Keeping up with compliance can be hard, especially as you need to develop new applications faster than before.

How can you spend more time on innovation and game changing features, and less time on adapting to rules, regulations, policies, laws, governance and new standards.”

HOTEL

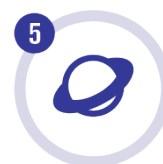
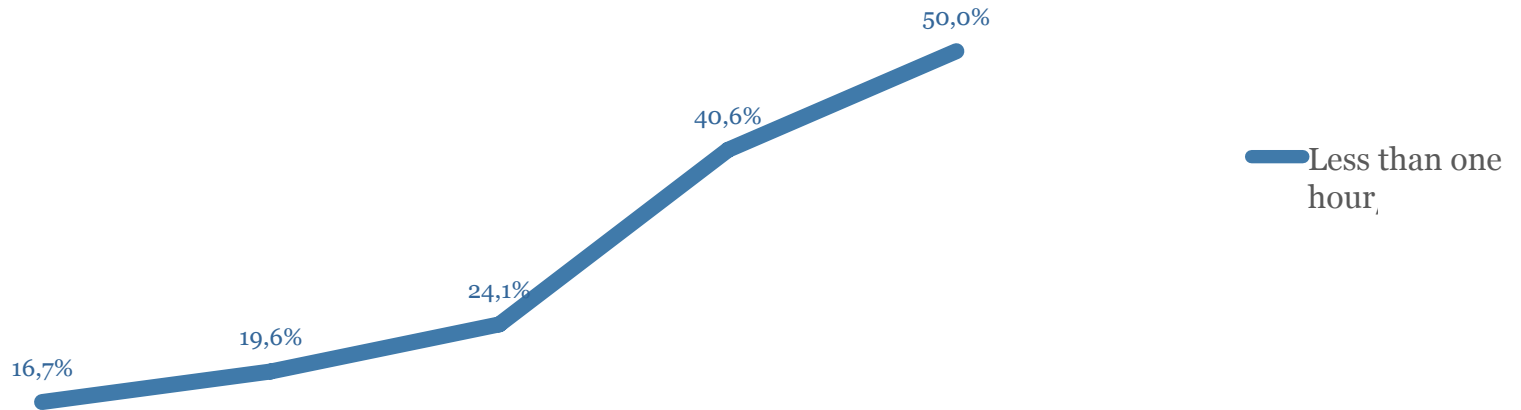
# NEXT STEP CLOUD MATURITY LADDER



Report available at [basefarm.com](https://basefarm.com)

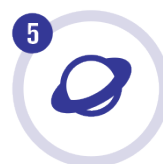
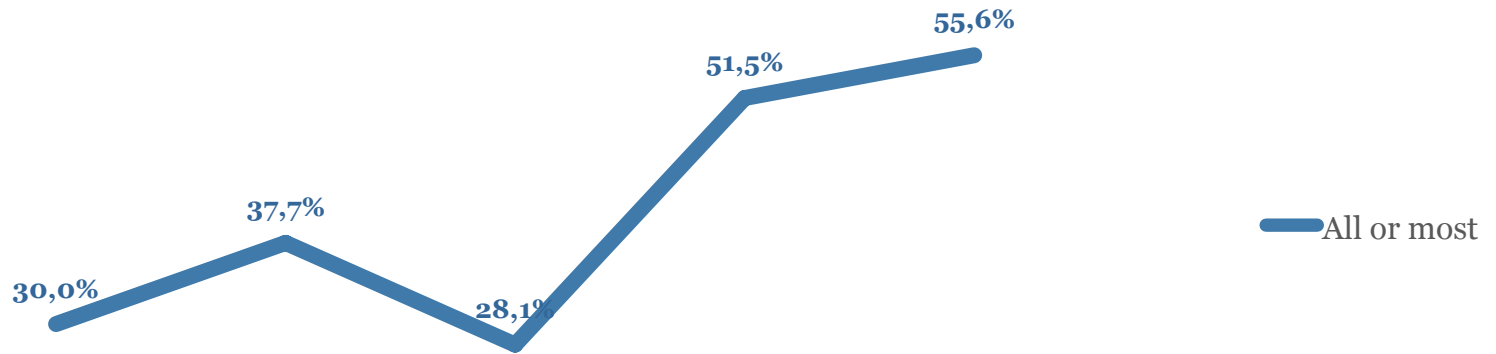
# DEPLOY – LESS THAN 1 HOUR

Q: Lead time for deploying changes, from code to production?



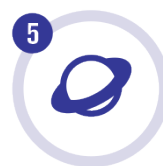
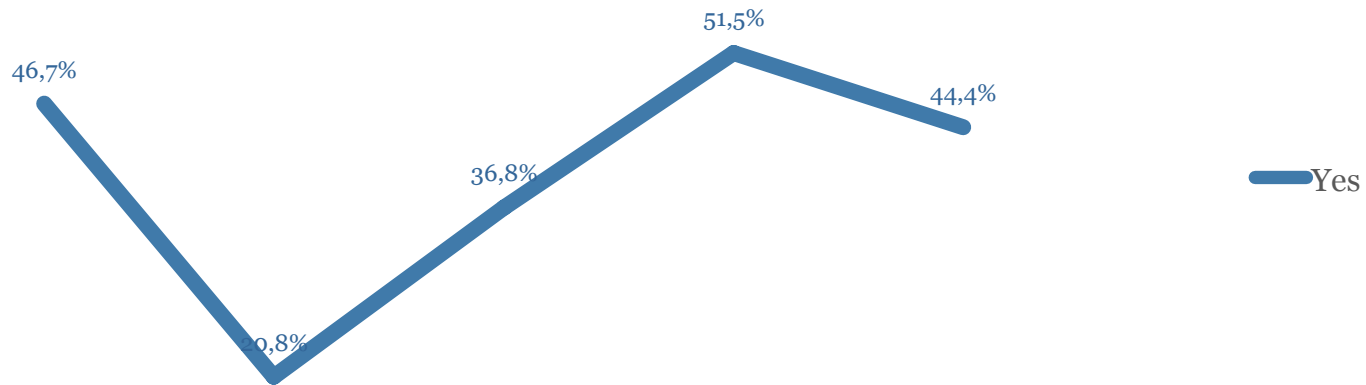
# PROJECTS STAFFED WITH BOTH DEV & OPS

Q: How many projects are staffed with teams with both development and operations skills?



# SECURITY PART OF DELIVERY LIFE CYCLE?

Q: Does your organization incorporate **security** into the entire software delivery lifecycle?





# COMPLIANCE



Norm assurance



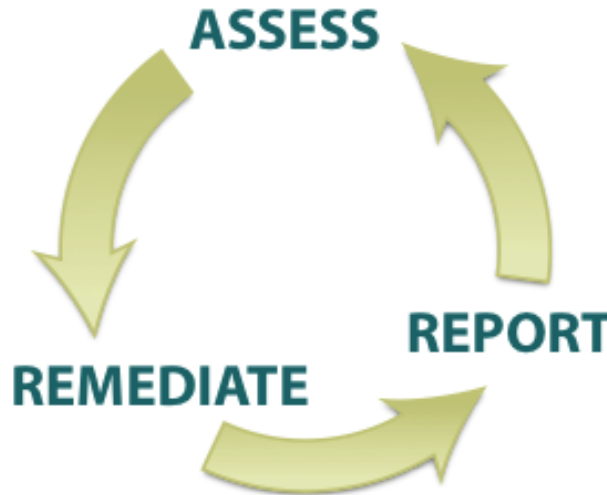


# COMPLIANCE EXAMPLE



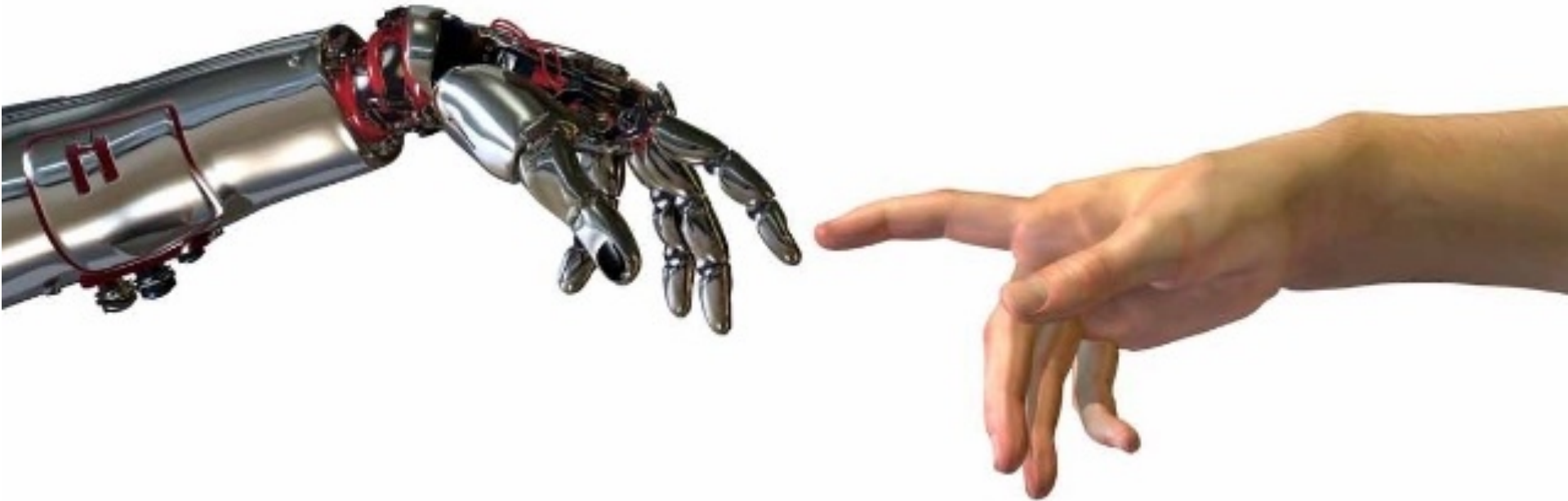
Build and  
Maintain safe

| Goals                                       | PCI DSS Requirements – Validated by Self or Outside Assessment   |
|---|--|
| Build and Maintain a Secure Network         | 1. Install and maintain a firewall configuration to protect cardholder data  |
| Protect Cardholder Data                     | <p>stem passwords and</p> <p>cross open, public</p> <p>re or programs applications</p> <p>ness need-to-know computer access</p> <p>a</p> <p>sources and cardholder</p> |
| Maintain a Vulnerability Management Program |  |
| Implement Strong Access Control Measures    |  |
| Regularly Monitor and Test Networks         | 11. regularly test security systems and processes  |
| Maintain an Information Security Policy     | 12. Maintain a policy that addresses information security for all personnel  |



Implement  
assessment  
control measures

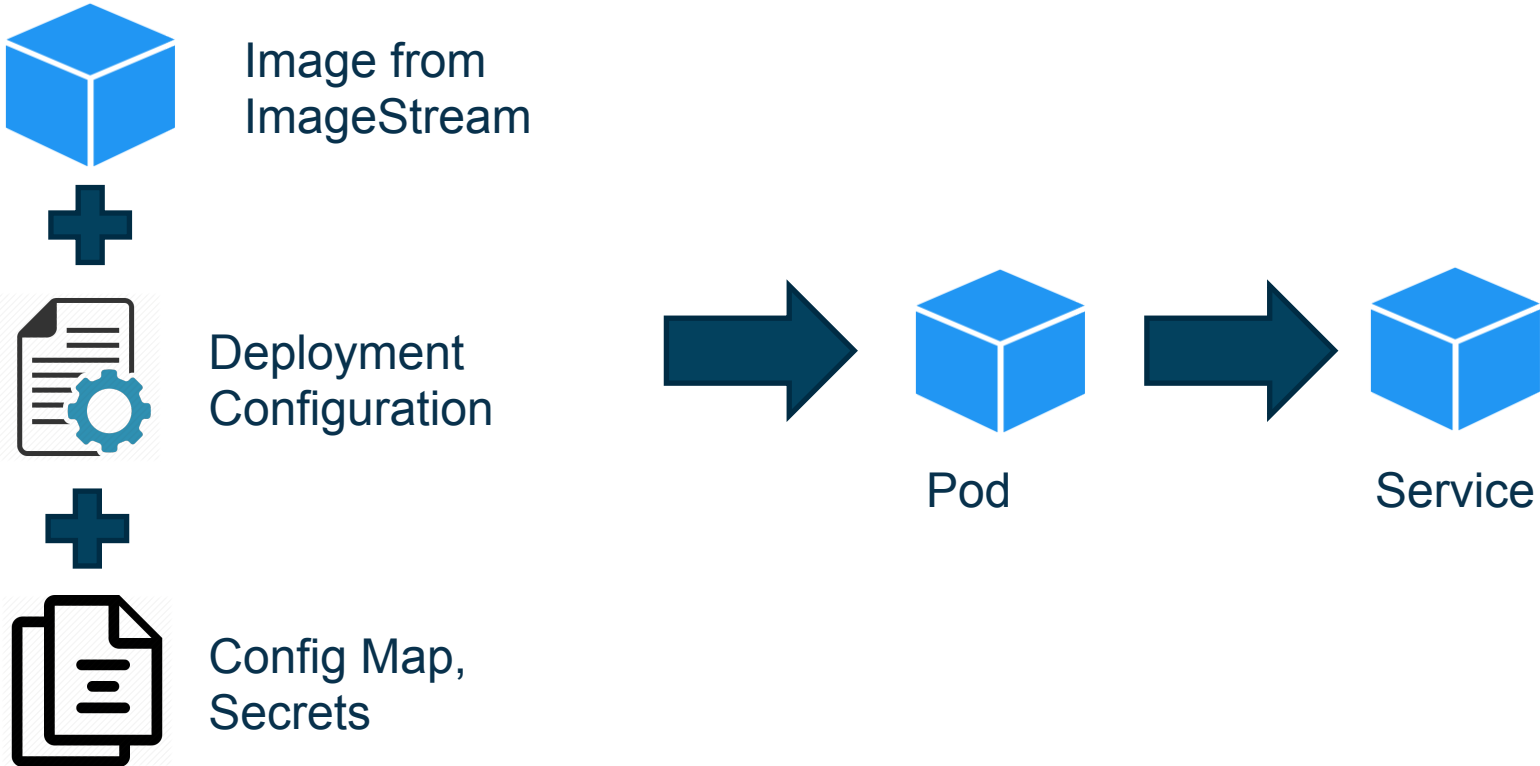
# WHAT CAN BE **AUTOMATED**?



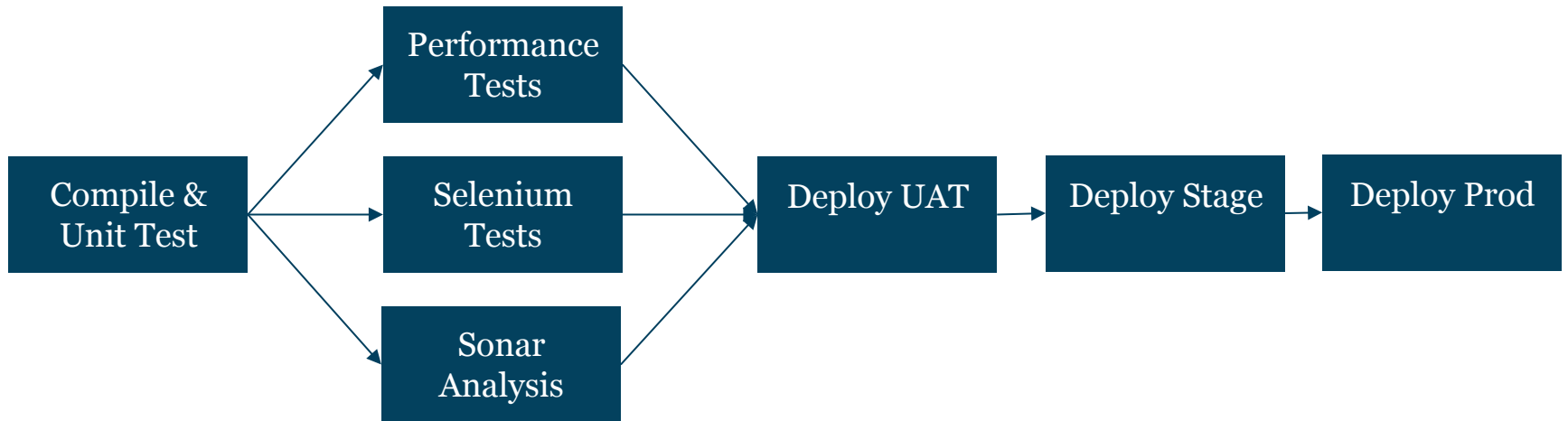


Simone Giertz <https://www.youtube.com/channel/UC3KEoMzNz8eYnwBC34RaKCQ/featured>

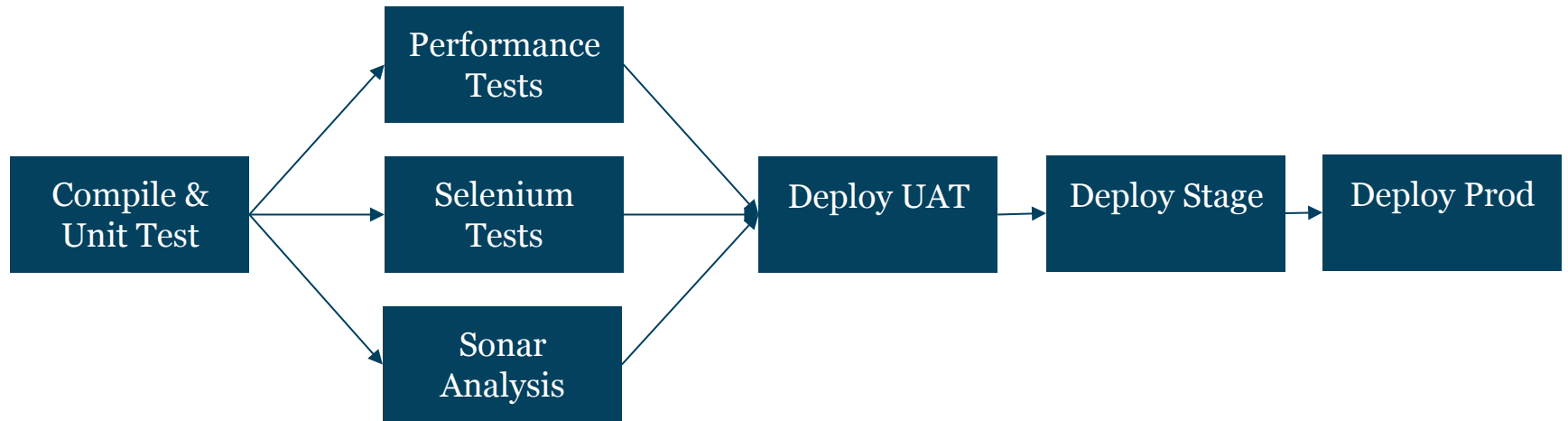
# DEPLOYMENT PROCESS



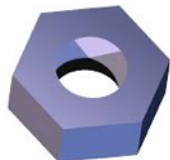
# AUTOMATION



# AUTOMATION



**Jenkins**



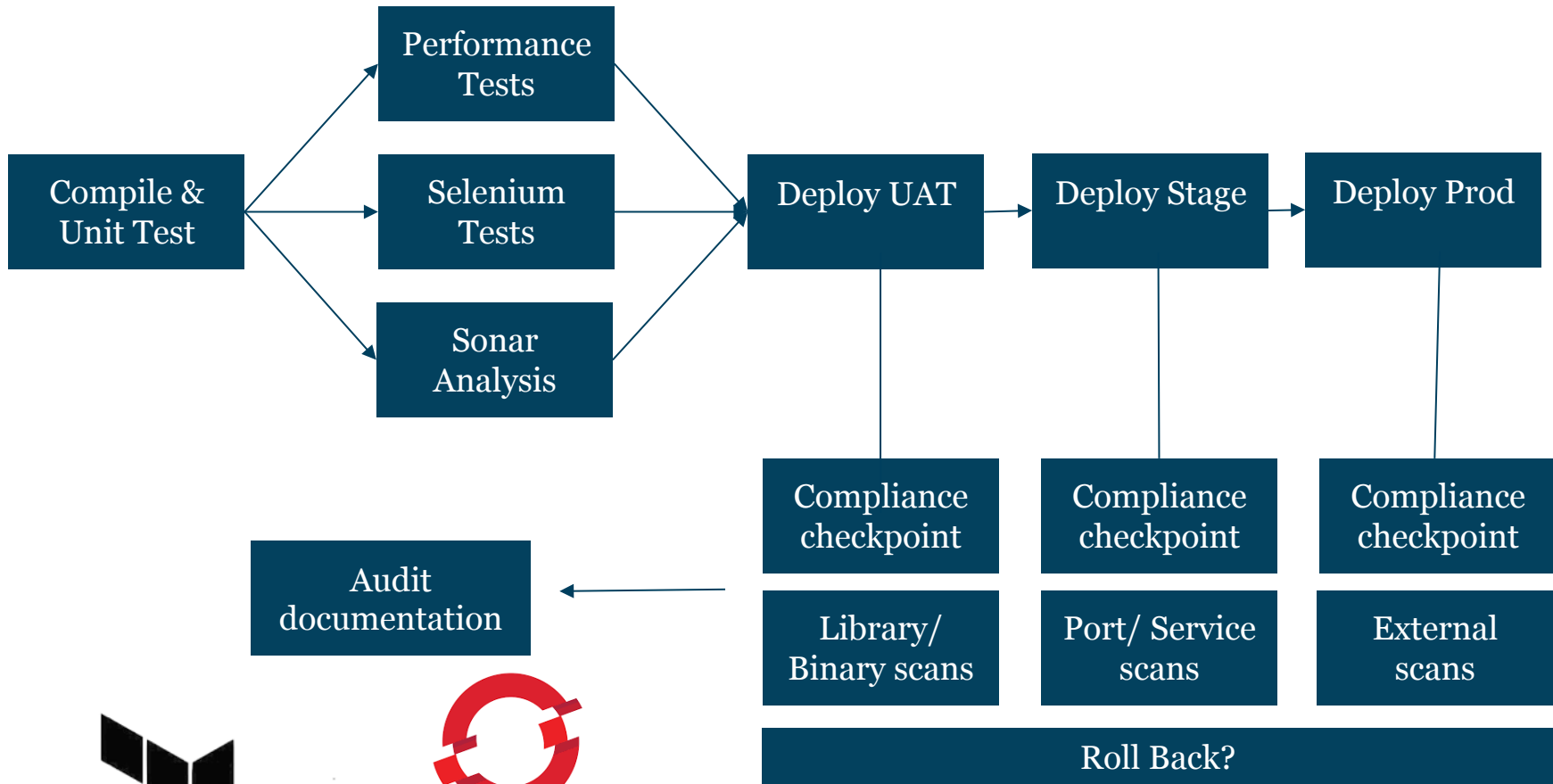
**Buildbot**



# COMPLIANCE MONITORING



Compliance automation as a part of Continuous Deployment/ Integration

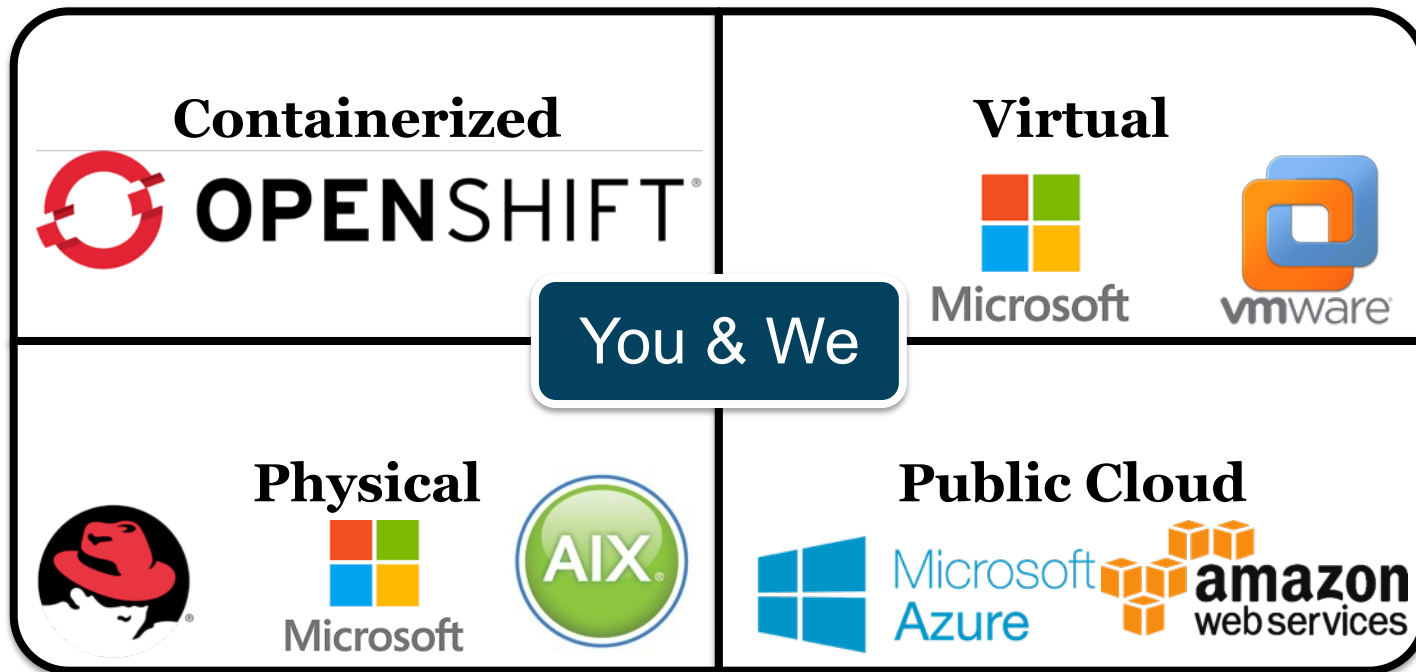








# HYBRID DELIVERY MODEL





**BASEFARM**  
**DRIVING INNOVATION**

---