

DEPLOY APPS, MANAGE SYSTEMS, CRUSH COMPLEXITY

Using Ansible

Peter Gustafsson
Solutions Architect

Magnus Glantz
Solutions Architect

THE AWX PROJECT



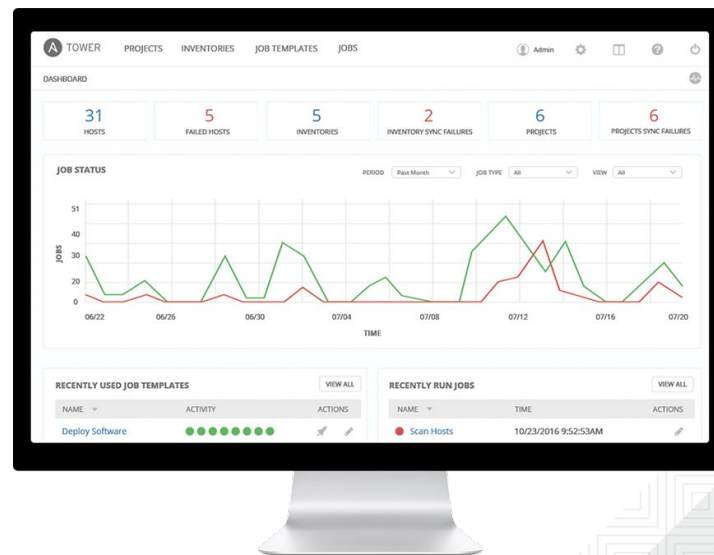
The **AWX Project** -- AWX for short -- is an open source community project, sponsored by Red Hat, that enables users to better control their Ansible project use in IT environments. AWX is the cutting-edge upstream project from which the "**Ansible Tower by Red Hat**" product is ultimately derived.

WHAT IS ANSIBLE ?

It's a **simple automation language** that can perfectly describe an IT application infrastructure in Ansible Playbooks.

It's an **automation engine** that runs Ansible Playbooks.

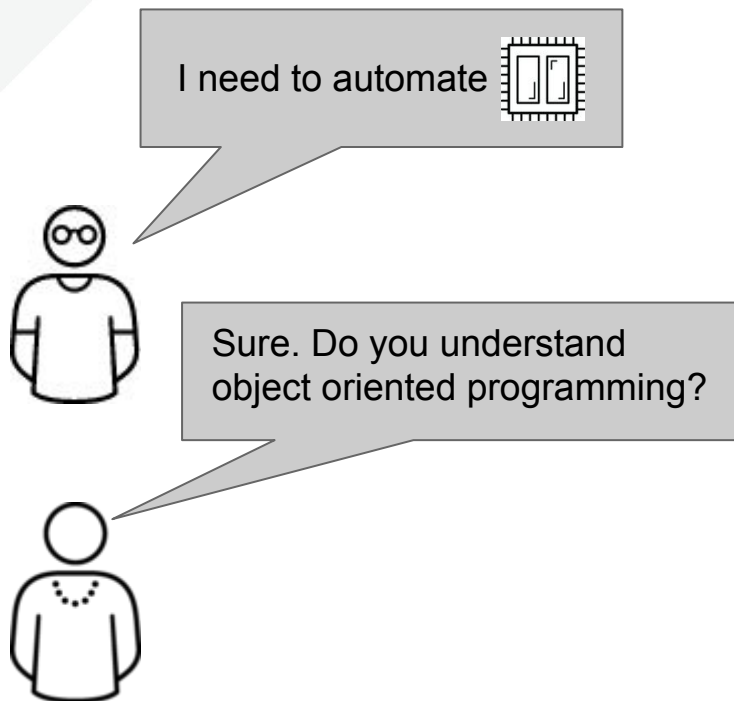
Ansible Tower is an **enterprise framework** for controlling, securing and managing your Ansible automation with a **UI and RESTful API**.



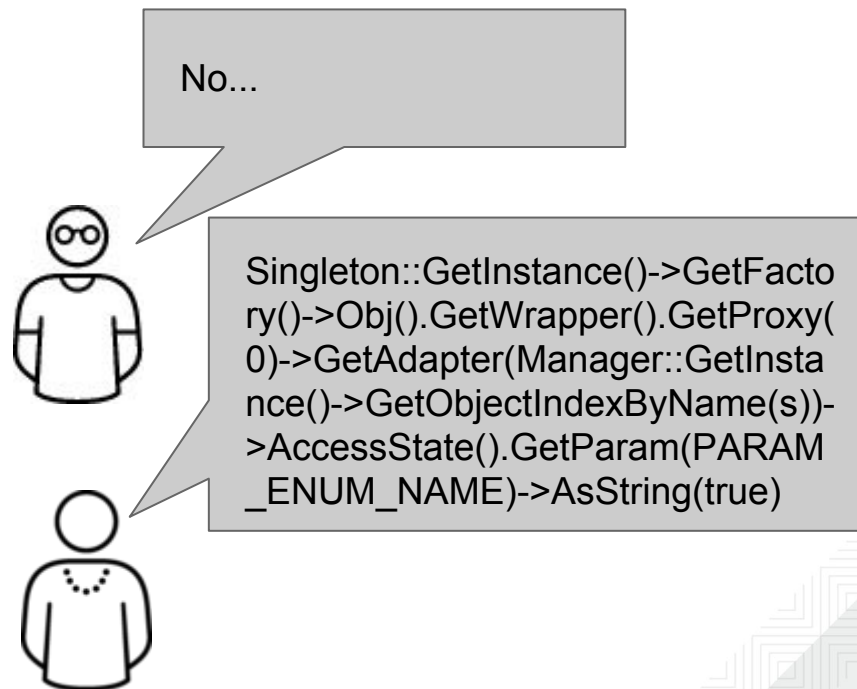
PROBLEMS SOLVED BY ANSIBLE:

Knowledge threshold

1

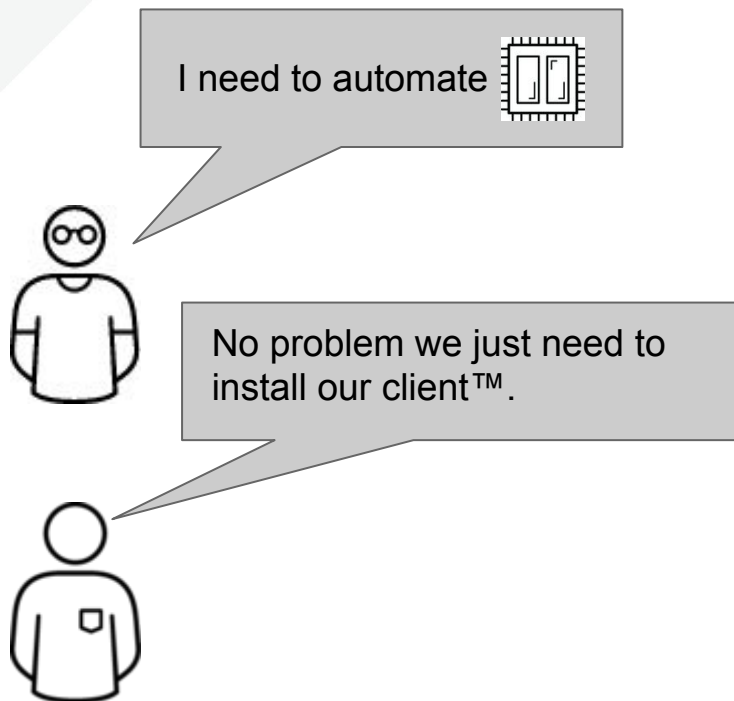


2

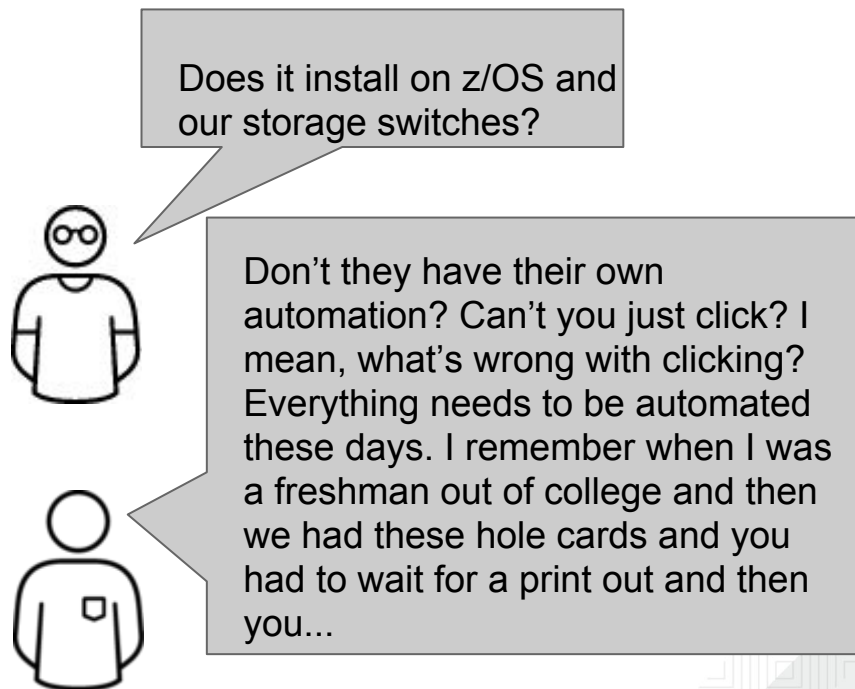


PROBLEMS SOLVED BY ANSIBLE: Automating all the things

1





2



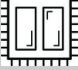


PROBLEMS SOLVED BY ANSIBLE:

Workflow orchestration

1

I need to first get a  and then a . How do I do that?




First, to get a  you need to use system X. Just integrate with it's XMLRPC interface. Then to get  you just reach out to the  department. They have their own system for managing that. It doesn't have an API, so...



2

My manager called me again. When can we go to market?



Funny you should ask. We need to start a project to do some LCM for the  department. Check back Q3 next year!



ANSIBLE

by Red Hat®



SIMPLE

Human readable automation
No special coding skills needed
Tasks executed in order
Get productive quickly



POWERFUL

App deployment
Configuration management
Workflow orchestration
Orchestrate the app lifecycle



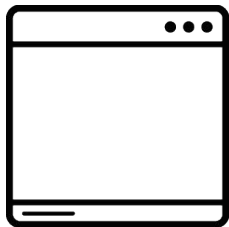
SECURE

Agentless architecture
Uses OpenSSH & WinRM
No agents to exploit or update
More efficient & more secure

SIMPLE - POWERFUL - AGENTLESS

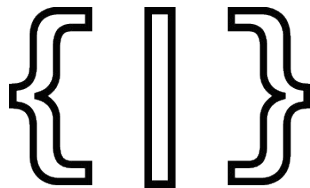
... WHAT IS MISSING ?

ANSIBLE TOWER



CENTRAL

Central place for everyone
Overview of present and past
Schedule jobs
Have one common view



INTEGRATION

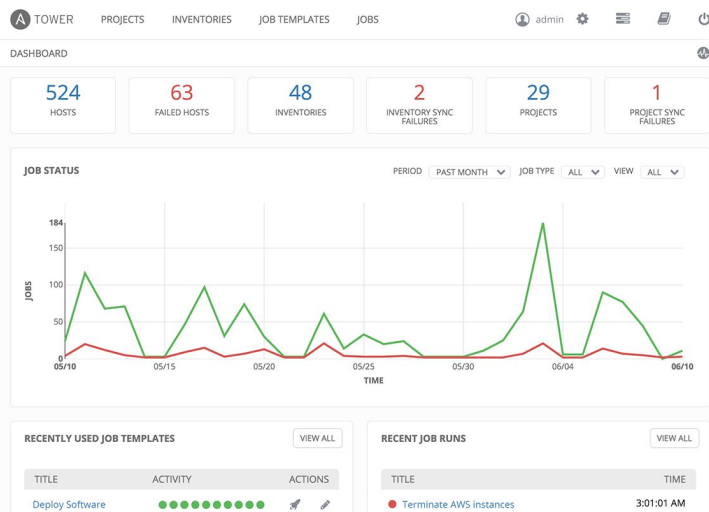
Simple, powerful API
Uses REST for quick adoption
No special agents or lib needed
Integrate with everything



ACCESS

Teams and users enable RBAC
Deposit credentials securely
Assign access to unprivileged
Separate access and execution

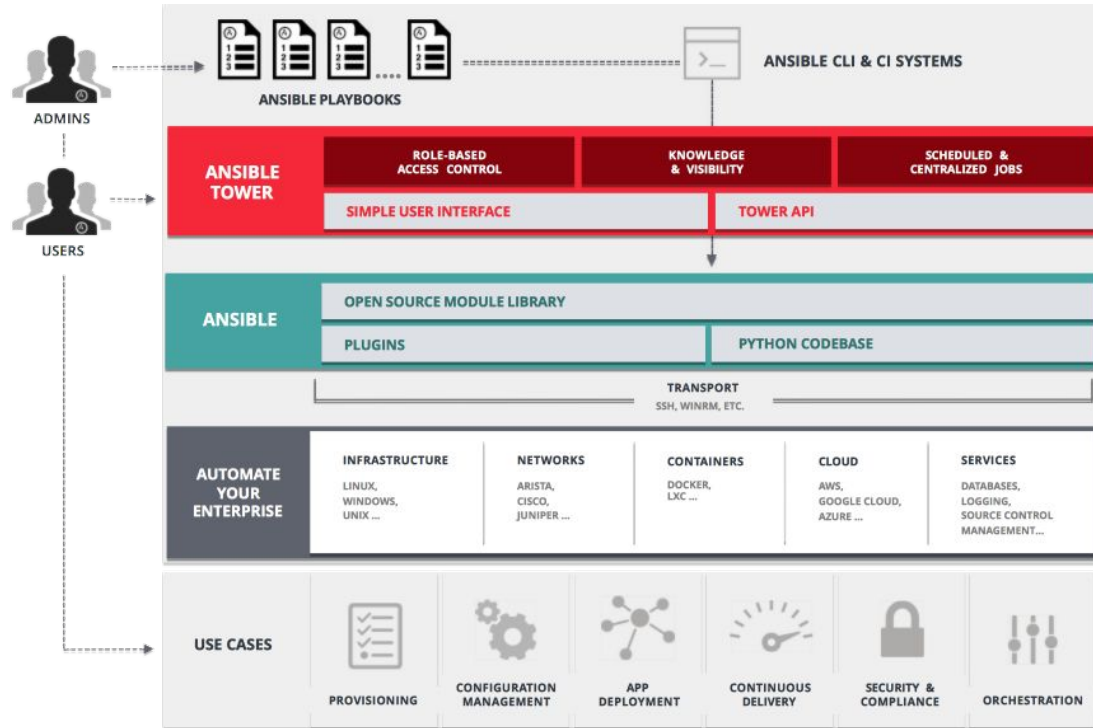
WHAT IS ANSIBLE TOWER ?



Ansible tower is an **enterprise framework** for controlling, securing and managing your Ansible automation – with a **UI and restful API**.

- **Role-based access control** keeps environments secure, and teams efficient.
- **Push-button deployments** for non-privileged users.
- **Central logging**, with connects to external frameworks
- **Workflow manager** to stitch multiple playbooks together.

PLATFORM OVERVIEW




ANSIBLE TRAINING

- **D0407 Automation with Ansible 1**
<https://www.redhat.com/en/services/training/do407-automation-ansible-i>
- **D0409 Automation with ansible 2: Ansible Tower**
<https://www.redhat.com/en/services/training/do409-automation-ansible-ii-ansible-tower>

DEMO


ROLE-BASED ACCESS CONTROL

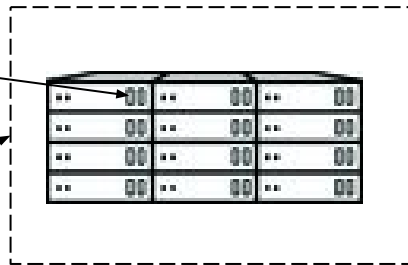
“I’m sorry, I can’t give you access to that.”

I need access to  in your system over there



I see. Well the problem is - that requires me to have to give you access to **that and a lot more**

Because of that, I have to say 



DEMO: “Here’s your access”

DEMO

PUSH-BUTTON DEPLOYMENT

&

ANSIBLE TOWER WORKFLOWS

DEMO WORKFLOWS...

LAUNCH JOB | Deploy VM in RHV

SURVEY

* VM NAME
db-server01.lab.arn.redhat.com

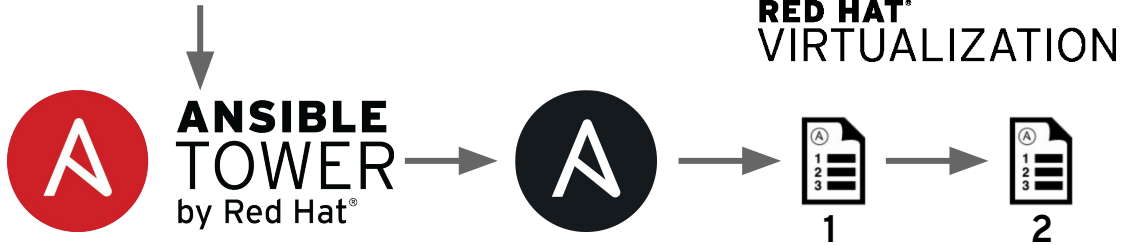
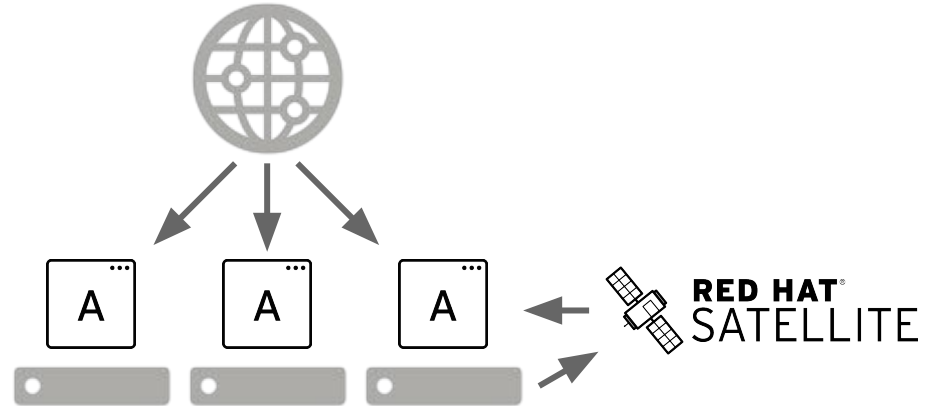
* SUBNET
ex: 192.168.1.0/24
10.32.212.0/24

* MEMORY SIZE
1 GiB

* SYSTEM PROFILE
DEV/RHEL7-SOE

INVENTORY: Satellite CREDENTIAL: rhforum_demo

CANCEL LAUNCH





RED HAT **FORUM**

Europe, Middle East & Africa

Ansible Tower is now based on Open Source!

Red Hat Ansible Engine

Previously known as Ansible Core

Brings enterprise-grade global support that Red Hat is known for to the popular Ansible automation community project.

- A reliable and enterprise-ready set of Ansible automation, modules and capabilities.
- Business hours or 24x7 support from Red Hat's award-winning, global support organization.
- All the benefits of a Red Hat subscription, including Open Source Assurance, Service Level Agreement (SLA) response, regular security and maintenance updates, and more.

Red Hat Ansible Engine Networking add-on

This offering includes full engineering support for the following networking-specific Ansible modules:

- Arista (EOS)
- Cisco (IOS, IOS-XR, NX-OS)
- Juniper (Junos OS)
- Open vSwitch
- VyOS