

RED HAT CONSULTING DISCOVERY SESSIONS

Develop your emerging technology adoption strategy

DATASHEET

ATTEND A DISCOVERY SESSION TO:

- Work hand-in-hand with subject matter experts to clarify your challenges, target state, and the technical and business risks.
- Learn how we have helped customers with similar challenges successfully adopt emerging technologies.
- Translate initiative into action.

The success of today's IT organizations depends on much more than the simple integration of a single piece of software or utilization of the latest appliance. Trends like digital transformation, explosive data growth, and agile applications require more than just selecting the right technologies. Success depends on embracing the necessary changes for your people, processes, and technologies to meet today's ever-shifting market needs—factors that require cross-functional and strategic collaboration to realize benefits across a complex technology landscape.

In a Red Hat® Consulting Discovery Session, your business and technical stakeholders work with Red Hat consultants to build a strategy for the successful adoption of emerging technologies.

INTERACTIVE STRATEGY DISCUSSIONS

Discovery Sessions are designed to clarify goals and challenges and align key stakeholders on the objectives, dependencies, and results of the desired solution. Together with your business, development, and operational stakeholders, we'll discuss your goals, review your organization's ability to achieve them from both a technological and a competency level, and define clear, actionable steps with measurable outcomes to begin your journey.

KEY ACTIVITIES AND OUTCOMES

During a Discovery Session, our subject matter experts will work with you to:

- Understand your existing business priorities, IT landscape, and challenges.
- Identify a prioritized list of use cases that benefit from emerging technology adoption.
- Highlight our work with customers facing similar challenges and demonstrate how we can apply similar solutions to meet your goals.
- Propose an architecture and roadmap that supports your vision and goals.

Following the Discovery Session, you will be able to articulate your key business and technical drivers to emerging technology adoption, have an inventory of business and technical use cases that support your vision, and receive an actionable roadmap for how Red Hat can partner with you in your journey.

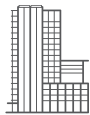


facebook.com/redhatinc
[@redhatnews](https://twitter.com/redhatnews)
linkedin.com/company/red-hat

THE RED HAT CONSULTING DIFFERENCE

With exclusive insight into upcoming features and product roadmaps, no consultant is better positioned to align teams, streamline processes, and make enterprise systems and applications work together using open source and proprietary technologies. Red Hat Consulting teams offer:

- **Communication straight from the source:** Consultants – many of whom are also active contributors to the upstream open source communities behind Red Hat technologies – work directly with Red Hat support and product development organizations, providing unparalleled expertise.
- **Diverse technical experience:** Consultants provide guidance based on a holistic understanding of building enterprise systems – not just Red Hat products.
- **Mentor-based approach:** Red Hat believes that knowledge must be open and shared, just like source code. Consultants give clients the information and skills to safely and efficiently migrate to Red Hat solutions.



ABOUT RED HAT

Red Hat is the world's leading provider of open source software solutions, using a community-powered approach to provide reliable and high-performing cloud, Linux, middleware, storage, and virtualization technologies. Red Hat also offers award-winning support, training, and consulting services. As a connective hub in a global network of enterprises, partners, and open source communities, Red Hat helps create relevant, innovative technologies that liberate resources for growth and prepare customers for the future of IT.



facebook.com/redhatinc
@redhatnews
linkedin.com/company/red-hat

NORTH AMERICA
1 888 REDHAT1

**EUROPE, MIDDLE EAST,
AND AFRICA**
00800 7334 2835
europe@redhat.com

ASIA PACIFIC
+65 6490 4200
apac@redhat.com

LATIN AMERICA
+54 11 4329 7300
info-latam@redhat.com