

RED HAT SERVICES OFFERING: INFRASTRUCTURE MIGRATION PILOT FOR RED HAT VIRTUALIZATION

DATASHEET

- Optimize virtual machine (VM) infrastructure costs, allowing redirection of savings to foster innovation
- Avoid vendor lock-in with an open hybrid cloud model
- Reduce operational complexity through adoption of a modern VM infrastructure

INTRODUCTION

Many organizations struggle to deliver high-quality services without sacrificing speed, cost efficiency, and security. While proprietary virtualization solutions might have traditionally met business needs, growing complexity leaves customers unable to perform life-cycle operations at scale on applications inside VMs.

Businesses need a flexible infrastructure to remain competitive, making an open hybrid cloud model and avoidance of vendor lock-in attractive. In addition to considering technology that improves cost savings and agility, these organizations need a strategic framework that responds to changing business needs and fosters innovation.

Red Hat[®] Consulting's Infrastructure Migration Pilot for Red Hat Virtualization offering delivers an advanced virtualization migration strategy that takes the first step toward simplifying VM life-cycle operations. With Red Hat Virtualization, Red Hat Consulting provides VM migration capabilities ready for immediate use, optimizing your infrastructure and enabling self-service migrations. At the end of the engagement, customers, in partnership with subject-matter experts, will have established:

- A methodology to assess and categorize workload migrations.
- Strategies, techniques, and tooling to automate various migration scenarios.
- A migration framework to accelerate and execute migrations at scale.
- A production-ready, KVM-based virtualization environment.
- Management tooling to consolidate life-cycle operations across pre-existing, new, and planned open hybrid cloud environments.

GET STARTED WITH RED HAT CONSULTING

Red Hat Consulting helps customers quickly, iteratively, and strategically achieve value while building enterprise-wide capabilities. During a Red Hat Consulting engagement, teams receive mentoring on the technology while learning and adopting the methods and skills needed to sustain success.

Across the following stages, Red Hat Consulting experts apply a set of products and services in a four-week engagement to help customers design, build, and scale a virtualization migration strategy that meets their unique business needs.

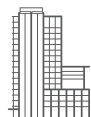
Discover and design

- Lead an interactive solution design session to identify current virtual infrastructure inefficiencies and pain points.
- Conduct an architecture analysis to formulate a migration strategy and operational considerations.



facebook.com/redhatinc
@RedHat

linkedin.com/company/red-hat



ABOUT RED HAT

Red Hat is the world's leading provider of open source software solutions, using a community-powered approach to provide reliable and high-performing cloud, Linux, middleware, storage, and virtualization technologies. Red Hat also offers award-winning support, training, and consulting services. As a connective hub in a global network of enterprises, partners, and open source communities, Red Hat helps create relevant, innovative technologies that liberate resources for growth and prepare customers for the future of IT.

NORTH AMERICA
1 888 REDHAT1

EUROPE, MIDDLE EAST,
AND AFRICA
00800 7334 2835
europe@redhat.com

ASIA PACIFIC
+65 6490 4200
apac@redhat.com

LATIN AMERICA
+54 11 4329 7300
info-latam@redhat.com



facebook.com/redhatinc
@RedHat
linkedin.com/company/red-hat

redhat.com
f13368_0718

Deploy	<ul style="list-style-type: none"> • Configure a Red Hat Virtualization cluster. • Configure networking and storage resources. • Set up a Red Hat CloudForms® migration orchestration appliance. • Configure access to source and target locations. • Test end-to-end access and run representative test migrations. • Produce baseline performance estimates.
Enable	<ul style="list-style-type: none"> • Guide the migration team on strategies, techniques, and tooling. • Provide side-by-side mentoring throughout the engagement. • Deliver and review architectural and operational documentation.

ACCELERATE CAPABILITIES WITH RED HAT TRAINING

Maximize your technology investment and master skills with our lab-intensive, real-world training. Through open-enrollment, virtual classrooms, or a Red Hat Learning Subscription, Red Hat Training provides current approach and practical application skills to optimize use of modern technologies.

THE RED HAT SERVICES DIFFERENCE

Working directly with Red Hat engineering and support organizations, Red Hat Consulting teams bring advanced skills to deliver solutions using Red Hat products and open standards. With exclusive insight into upcoming features and product roadmaps, nobody is better positioned to align teams, streamline processes, and make enterprise systems and applications work together using open source and proprietary technologies.

- **Straight from the source.** Red Hat Consulting teams communicate directly with Red Hat support and product development organizations. Many of our consultants are also active contributors to the upstream open source communities behind Red Hat technologies, so they bring unparalleled expertise.
- **Diverse technical experience.** Red Hat Consulting maintains expertise with open source and proprietary systems and application platforms. Our comprehensive understanding of the technology market helps us provide clients with a complete view of their environment. Our guidance is based on a holistic understanding of building enterprise systems, not just our own products.
- **Mentor-based approach:** Red Hat Consulting's approach gives clients the information and skills they need to move to Red Hat solutions in a safe and efficient manner. Red Hat believes that knowledge must be open and shared, just like source code.
- **Crucial, real-world training:** Red Hat Training and Certification develops role-based knowledge through hands-on training covering emerging and foundational open source technologies, for building real-world skills that support critical commoditization and transformation projects alike.