

# RED HAT SERVICES OFFERING: AUTOMATE GLOBAL TRAFFIC MANAGEMENT

Establish a global traffic manager for multicloud deployments

DATASHEET



## BENEFITS

- Define a high-level multicloud architecture and strategy
- Identify the optimal multicloud utilization patterns to control costs
- Deliver global traffic manager automation

## INTRODUCTION

Multicloud technology comes with great promise. In addition to giving businesses increased availability of their cloud operations, multicloud environments can help them reduce costs and avoid vendor lock-in. As multicloud services play an increasingly important role in the enterprise, the need to balance application traffic expands beyond the datacenter. However, managing cloud traffic is complex. Deployments can be very expensive if proper cost-control mechanisms are not in place, and manual provisioning and complex scripting can lead to errors in production. As enterprises move toward a multicloud model, it is critical to evolve their traffic management strategy to enhance application performance across disparate cloud platforms.

Red Hat<sup>®</sup> Consulting has developed a holistic strategy that centralizes, standardizes, and automates global traffic management. With the help of Red Hat subject matter experts, customers can establish a global traffic manager for multicloud deployments, specify provisioning and configuration with global traffic manager automation, and optionally codify service-level agreement (SLA) management with tooling and monitoring. A strategic framework for multicloud can help customers realize the full benefits of multicloud technology, including cost control, resiliency, and compliance with systemwide or individual remediation.

## GET STARTED WITH RED HAT CONSULTING

Red Hat Consulting helps customers quickly, iteratively, and strategically achieve value while building capabilities throughout the enterprise. During a Red Hat Consulting engagement, teams receive training on the technology while learning and adopting the methods and skills needed to sustain success now and into the future.

Across the following stages, Red Hat Consulting experts apply a set of products and services in a six-week engagement to help customers design, build, and scale a life-cycle management strategy that meets their unique business needs.

DISCOVER AND DESIGN	DEPLOY	ENABLE
<ul style="list-style-type: none"> <li>• Conduct multicloud architecture and strategy sessions with the goal of understanding the customer's requirements, processes, and current resources.</li> <li>• Define the end state for multicloud architecture.</li> <li>• Gather the technical requirements and select the appropriate solution.</li> </ul>	<ul style="list-style-type: none"> <li>• Identify architecture constraints and assumptions.</li> <li>• Implement global traffic manager automation based on application requirements.</li> <li>• Demonstrate the customer-specific use case.</li> <li>• Create a roadmap for other multicloud use cases.</li> </ul>	<ul style="list-style-type: none"> <li>• Provide side-by-side mentoring throughout the engagement.</li> <li>• Deliver and review architectural and operational documentation.</li> </ul>



facebook.com/redhatinc  
@redhat

linkedin.com/company/red-hat

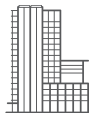
## ACCELERATE CAPABILITIES WITH RED HAT TRAINING

Maximize your technology investment and master skills with our lab-intensive, real-world training. Through open enrollment, virtual classrooms, or a Red Hat Learning Subscription, Red Hat Training provides a current approach and practical application of new skills and methods to make the most efficient and effective use of modern technologies.

## THE RED HAT SERVICES DIFFERENCE

Working directly with Red Hat engineering and support organizations, Red Hat Consulting teams bring advanced skills to deliver solutions using Red Hat products and open standards. With exclusive insight into upcoming features and product roadmaps, nobody is better positioned to align teams, streamline processes, and make enterprise systems and applications work together using open source and proprietary technologies.

- **Straight from the source:** Red Hat Consulting teams communicate directly with Red Hat support and product development organizations. Many of our consultants are also active contributors to the upstream open source communities behind Red Hat technologies, so they bring unparalleled expertise.
- **Diverse technical experience:** Red Hat Consulting maintains deep expertise with open source and proprietary systems and applications platforms. Our comprehensive understanding of the technology market helps us provide clients with a complete view of their environment. Our guidance is based on a holistic understanding of building enterprise systems, not just our own products.
- **Mentor-based engagements:** Red Hat Consulting's approach gives clients the information and skills they need to move to Red Hat solutions in a safe and efficient manner. Red Hat believes that knowledge must be open and shared, just like source code.
- **Crucial, real-world training:** Red Hat Training and Certification develops role-based knowledge through hands-on training covering emerging and foundational open source technologies. It helps build real-world skills that support critical commoditization and transformation projects alike.



## ABOUT RED HAT

Red Hat is the world's leading provider of open source software solutions, using a community-powered approach to provide reliable and high-performing cloud, Linux, middleware, storage, and virtualization technologies. Red Hat also offers award-winning support, training, and consulting services. As a connective hub in a global network of enterprises, partners, and open source communities, Red Hat helps create relevant, innovative technologies that liberate resources for growth and prepare customers for the future of IT.



facebook.com/redhatinc  
@redhat  
linkedin.com/company/red-hat

NORTH AMERICA  
1 888 REDHAT1

EUROPE, MIDDLE EAST,  
AND AFRICA  
00800 7334 2835  
europe@redhat.com

ASIA PACIFIC  
+65 6490 4200  
apac@redhat.com

LATIN AMERICA  
+54 11 4329 7300  
info-latam@redhat.com