

# INCREASE SECURITY AND COMPLIANCE WITH ADVANCED AUTOMATION

SOLUTION BRIEF



## 74%

of telecommunications organizations reported an increase in cyberattacks to their customers during the last year.<sup>1</sup>

Red Hat provides advanced automation and management tools to help you manage your infrastructure more effectively for security and compliance.

Learn more about implementing continuous security and compliance strategies with Red Hat at [redhat.com/en/technologies/guide/it-security](https://redhat.com/en/technologies/guide/it-security).

## SECURITY AND COMPLIANCE ARE CRITICAL FOR SUCCESS

Security is a top concern for telecommunications organizations.<sup>1</sup> In fact, 74% of telecommunications organizations reported an increase in cyberattacks to their customers during the last year.<sup>1</sup> As a result, you need to implement continuous security and compliance measures to protect your business and customers.

Manually managing complex, hybrid environments can increase the risk of security and compliance issues. Manual operations can result in slower detection and remediation of issues, errors in resource configuration, and inconsistent policy application.

Red Hat provides advanced automation and management tools to help you manage your infrastructure more effectively for security and compliance.

## BUILD AN AUTOMATED FOUNDATION FOR SECURITY AND COMPLIANCE

Red Hat's integrated solution delivers the technologies you need to implement an automated security and compliance strategy across your infrastructure and organization.

- **Red Hat® Enterprise Linux®** provides a security-focused operating system with built-in tools to help protect your environment. Included security profiles help you comply with industry standards like Payment Card Industry Data Security Standard (PCI DSS), Defense Information Systems Agency (DISA) Security Technical Implementation Guide (STIG), and Health Insurance Portability and Accountability Act (HIPAA).
- **Red Hat Ansible® Automation** provides a simple, flexible, agentless automation language for all aspects of your environment, from systems and applications to tools and processes.
- **Red Hat Satellite** delivers complete life-cycle management—including provisioning, patching, and configuration and content management—for your Red Hat infrastructure.
- **Red Hat Insights** provides predictive analytics and remediation scripts for security, performance, availability, and stability issues within your Red Hat infrastructure.

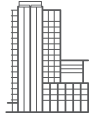
With the Red Hat automated security and compliance solution, you can improve compliance with security policies, deploy resources consistently at scale, and identify and remediate security issues faster.

## IMPROVE SECURITY COMPLIANCE ACROSS YOUR INFRASTRUCTURE

According to Gartner, 99% of the vulnerabilities exploited by the end of 2020 will continue to be ones known by security and IT professionals at the time of the incident.<sup>2</sup> Red Hat technologies can help you proactively find and remediate security and compliance issues across your environment. Advanced management and automation tools let you scan your environment for non-compliant

<sup>1</sup> Telecoms.com Intelligence, "Annual Industry Survey Report 2018," November 2018. [telecoms.com/intelligence/telecoms-com-annual-industry-survey-report-2018](https://telecoms.com/intelligence/telecoms-com-annual-industry-survey-report-2018).

<sup>2</sup> Gartner, "Focus on the Biggest Security Threats, Not the Most Publicized," November 2017. [gartner.com/smarterwithgartner/focus-on-the-biggest-security-threats-not-the-most-publicized/](https://gartner.com/smarterwithgartner/focus-on-the-biggest-security-threats-not-the-most-publicized/).



## ABOUT RED HAT

Red Hat is the world's leading provider of open source software solutions, using a community-powered approach to provide reliable and high-performing cloud, Linux, middleware, storage, and virtualization technologies. Red Hat also offers award-winning support, training, and consulting services. As a connective hub in a global network of enterprises, partners, and open source communities, Red Hat helps create relevant, innovative technologies that liberate resources for growth and prepare customers for the future of IT.

NORTH AMERICA  
1 888 REDHAT1

EUROPE, MIDDLE EAST,  
AND AFRICA  
00800 7334 2835  
europe@redhat.com

ASIA PACIFIC  
+65 6490 4200  
apac@redhat.com

LATIN AMERICA  
+54 11 4329 7300  
info-latam@redhat.com



facebook.com/redhatinc  
@redhat  
linkedin.com/company/red-hat

Copyright © 2018 Red Hat, Inc. Red Hat, Red Hat Enterprise Linux, Ansible, and the Shadowman logo are trademarks or registered trademarks of Red Hat, Inc. or its subsidiaries in the United States and other countries. Linux® is the registered trademark of Linus Torvalds in the U.S. and other countries.

redhat.com  
F15439\_1218\_KVM

configurations and apply controlled remediations. Consolidated interfaces give you detailed visibility, control, and configuration management capabilities. Auditing, logging, and reporting features ease change tracking and security compliance auditing.

## PROVISION RESOURCES AND SERVICES CONSISTENTLY AT SCALE

Human errors are the cause of 17% of data breaches.<sup>3</sup> Red Hat's solution lets you provision resources consistently and in compliance with security policies as your environment grows. Included security configuration profiles and remediation scripts let you quickly configure and deploy resources accordingly to custom or industry-standard security baselines, reducing the risk of human errors. Red Hat automation technologies can improve your operational efficiency and cut delivery lead times by up to 66%.<sup>4</sup>

## IDENTIFY AND REMEDIATE SECURITY ISSUES FASTER

On average, 68% of data breaches take months or longer to discover.<sup>3</sup> Red Hat management and automation tools help you proactively spot and respond to security issues across your entire environment. Continuous, centralized monitoring and scanning quickly alerts you to potential issues. Predictive analytics detect configurations that are known to have security, performance, availability, or stability issues. Automated patching and remediation ensures systems are reconfigured in a controlled manner and without delays, helping to protect your infrastructure even at scale. In fact, automating with Red Hat Ansible Tower can reduce recovery time following a security incident by up to 94%.<sup>4</sup>

## LEARN MORE

Security and compliance are critical for success in an increasingly complex and digital world. Red Hat's advanced management and automation tools can help you implement continuous security and compliance across your hybrid infrastructure at scale. Read the [Red Hat automated security and compliance whitepaper](#) to learn more about these security and compliance solutions. To explore how this solution works within your environment, schedule a Red Hat Consulting discovery session at [redhat.com/en/services/consulting](https://redhat.com/en/services/consulting).

<sup>3</sup> Verizon, "2018 Data Breach Investigations Report," March 2018. [enterprise.verizon.com/resources/reports/dbir/](https://enterprise.verizon.com/resources/reports/dbir/).

<sup>4</sup> Forrester, "The Total Economic Impact™ Of Red Hat Ansible Tower," June 2018. [redhat.com/en/engage/total-economic-impact-ansible-tower-20180710](https://redhat.com/en/engage/total-economic-impact-ansible-tower-20180710).