

RED HAT STORAGE CONSOLE 2

DATASHEET

PRODUCT OVERVIEW

Red Hat® Storage Console 2 is an enterprise-ready storage management platform built to manage Red Hat Ceph Storage. This new management platform is integrated with Red Hat Ceph Storage 2, improving its usability with an intuitive interface for customers to install, manage, and monitor Ceph storage infrastructure from a single interface. Using real-time data from the Ceph Calamari data service, Red Hat Storage Console 2 serves as a clean and modern interface to proactively monitor and manage health, performance, and capacity utilization.

Red Hat Storage Console 2 consists of:

- Integrated on-premise management console.
- Ansible-based deployment tools for installation (or import) of Ceph 2.
- Graphical user interface (GUI) with cluster visualization.
- Advanced Ceph monitoring and diagnostic information.
- Cluster and per-node usage and performance statistics.

FEATURES

- Deploy block and object storage from a single interface.
- Discover available nodes in a cluster:
 - Set up CRUSH map on cluster create.
 - Add monitor (Mon) and object storage device (OSD) nodes.
 - Set state of OSDs (up/down/in/out).
 - Create pools, RADOS objects, and RADOS block devices (RBDs).
 - Resize RBDs.
 - Monitor health with email alerts.
 - Set pool replication and erasure coding.
- Use northbound REST application programming interfaces (APIs) for all operations performed in the console.
- View node and cluster status.
- Monitor and manage capacity and performance.

facebook.com/redhatinc

@redhatnews

linkedin.com/company/red-hat

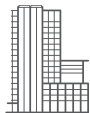
- Get alerts on key events in cluster.
- Enable troubleshooting with statistics and information about every cluster component.
- Comprehensively manage all Ceph clusters in infrastructure from one user interface (UI).
- View granular configuration options from the command-line interface (CLI) or GUI.
- Authenticate with lightweight directory access protocol (LDAP) or Active Directory.

BENEFITS

- Easily install, manage, and monitor Ceph storage infrastructure from a single interface.
- Improve time to value with streamlined provisioning workflows, and enhance discovery, insight, and management with the integrated service dashboard.
- Achieve comprehensive visibility with a unified view of Ceph storage infrastructure in a single console.
- Proactively monitor and manage health, performance, and capacity utilization and gain operational intelligence.

TECHNICAL SPECIFICATIONS

The Red Hat Storage Console 2 requires the Red Hat Enterprise Linux® 7.2 operating system and 16GB of RAM. It can be run as a virtual appliance or a bare-metal system.



ABOUT RED HAT

Red Hat is the world's leading provider of open source software solutions, using a community-powered approach to provide reliable and high-performing cloud, Linux, middleware, storage, and virtualization technologies. Red Hat also offers award-winning support, training, and consulting services. As a connective hub in a global network of enterprises, partners, and open source communities, Red Hat helps create relevant, innovative technologies that liberate resources for growth and prepare customers for the future of IT.



facebook.com/redhatinc
@redhatnews
linkedin.com/company/red-hat

NORTH AMERICA
1 888 REDHAT1

EUROPE, MIDDLE EAST,
AND AFRICA
00800 7334 2835
europe@redhat.com

ASIA PACIFIC
+65 6490 4200
apac@redhat.com

LATIN AMERICA
+54 11 4329 7300
info-latam@redhat.com