

RED HAT ENTERPRISE LINUX SITE SUBSCRIPTION

A Red Hat academic offering

BROCHURE



“Everything is for the students. Red Hat Enterprise Linux allows us to sustain the performance and high level of service that we currently provide to our students.”

MARK WEIGEL
LEAD UNIX TEAM IT DEPARTMENT AT
THE UNIVERSITY OF OKLAHOMA

Colleges, universities and academic institutions face unique challenges. Whether committing to student success, researching solutions to society’s top issues or maintaining a healthy population, higher education is a market like no other. Red Hat academic offerings were created to help educational institutions build out their IT infrastructure while avoiding vendor-lock in, reducing costs, and creating scalable and sustainable IT environments.

Red Hat® products and solutions are ready-made for institutions of higher learning to:

- Run enterprise applications, such as learning management and student information systems, on an open, secure foundation.
- Rapidly modernize legacy education and operational applications with developer toolkits and container platforms.
- Achieve unified management of traditional, virtualized environments and cloud-based infrastructure.
- Improve interoperability with other technology vendor.
- Build public, private, and hybrid clouds.

Whether in an administrative, educational, or research-oriented capacity, Red Hat provides various software, products and services to educational institutions interested in utilizing commercially supported open source technologies.

RED HAT ENTERPRISE LINUX SITE SUBSCRIPTION

The Red Hat Enterprise Linux Site Subscription for academics provides a single campus access to these major Red Hat enterprise products:

[Red Hat Enterprise Linux®](#) (x86_64 Server, Workstation, Desktop, SAP Applications, Extended Update Support)

[Red Hat Enterprise Linux Atomic Host](#)

[Red Hat Enterprise Linux for HPC](#)

[Red Hat Enterprise Linux for IBM POWER](#)

[Red Hat Developer Toolset](#)

[Red Hat Software Collections](#)

A site subscription may be used by faculty, staff, and students in both non-production and production environments within the institution.

RED HAT ACADEMIC PRICING

Red Hat academic offerings ensure you get more IT for your money by offering campus-wide subscriptions across all departments based on full-time equivalent (FTE) employees. FTEs are calculated as follows:

- All full-time faculty and staff are considered one unit .
- Part-time staff are considered a half of a unit.
- Part-time faculty are considered a third of a unit.

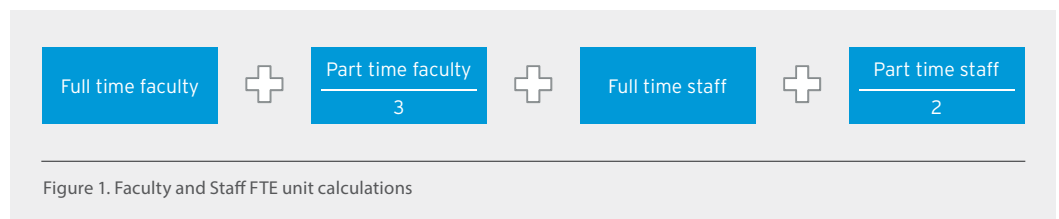


Figure 1. Faculty and Staff FTE unit calculations

For example: If you have 2,000 full-time faculty, 1,500 part-time faculty, 1,000 full-time staff, and 500 part-time staff, the FTE units are calculated as $2,000 + (1500 \div 3) + 1,000 + (500 \div 2) = 3,750$ FTE units.

| PRODUCT | PRICE | SUPPORT LEVEL |
|-----------------------------------------------------------------------------------------------------------------------------------------------------|-----------|---------------|
| Red Hat Enterprise Linux Site Subscription for academics (Server, Desktop, Workstation, POWER, Atomic, HPC), Standard with Smart Management per FTE | \$27/ FTE | Standard |
| Red Hat Enterprise Linux Site Subscription for academics (Server, Desktop, Workstation, POWER, Atomic, HPC), Premium with Smart Management per FTE | \$42/FTE | Premium |

Frequently Asked Questions:

What if my FTE unit count includes a fraction?

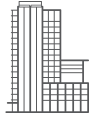
- If the total FTE unit count ends in a fraction, the total number of FTE units is rounded up to the next unit. For example: A 2,500 1/2 FTE number rounds to 2501 FTEs.
- Is there a minimum requirement to participate in the site subscription programs?
- Yes. The minimum FTE unit number required is 1,000.

Do I have to subscribe for my entire institution?

- Yes. The program is for the entire institution.

Eligibility

Red Hat academic offerings are intended to support education initiatives in the academic community at an affordable price.



ABOUT RED HAT

Red Hat is the world's leading provider of open source software solutions, using a community-powered approach to provide reliable and high-performing cloud, Linux, middleware, storage, and virtualization technologies. Red Hat also offers award-winning support, training, and consulting services. As a connective hub in a global network of enterprises, partners, and open source communities, Red Hat helps create relevant, innovative technologies that liberate resources for growth and prepare customers for the future of IT.

- In the United States, these academic offerings are only available to accredited institutions recognized by the U.S. Department of Education. Subscription pricing is available to valid institutions and users (i.e., teachers, students, staff, researchers, etc.) affiliated with the institution.
- An educational institution is an organization, such as a primary or secondary school, college or university that has a regularly scheduled curriculum, a regular faculty, and a regularly enrolled student body in attendance at a place where educational activities are regularly carried out.
- Federally Funded Research and Development Centers (FFRDCs) operated by an academic institution do not qualify for academic subscriptions.
- Hospitals and healthcare systems are not eligible to acquire academic subscriptions unless a qualified educational institution wholly owns and operates them, or they have established academic accreditation.
- The Red Hat Site Subscription is only made available to support the FTE and constituency of the purchasing college or university and is not to be used in support of outside entities.
- Verification of eligibility based on accreditation status can be determined at <http://ope.ed.gov/accreditation/Search.aspx>.

For any subscription or compliance related questions, please contact your Red Hat account manager or your authorized Red Hat partner.

NORTH AMERICA
1 888 REDHAT1

**EUROPE, MIDDLE EAST,
AND AFRICA**
00800 7334 2835
europe@redhat.com

ASIA PACIFIC
+65 6490 4200
apac@redhat.com

LATIN AMERICA
+54 11 4329 7300
info-latam@redhat.com



facebook.com/redhatinc
@redhat

linkedin.com/company/red-hat

Copyright © 2018 Red Hat, Inc.
Red Hat, Red Hat Enterprise Linux,
the Shadowman logo, and JBoss are
trademarks or registered trademarks
of Red Hat, Inc. or its subsidiaries in the
United States and other countries. Linux[®]
is the registered trademark
of Linus Torvalds in the U.S. and
other countries.