

# RED HAT CLOUD SUITE

Integrated application development, cloud infrastructure, and management

DATASHEET

*“Red Hat ... leads the evaluation with its powerful portal, top governance capabilities, and a strategy built around integration, open source, and interoperability.”*

THE FORRESTER WAVE™:  
PRIVATE CLOUD SOFTWARE  
SUITES, Q1 2016



OPENSIFT ENTERPRISE BY RED HAT,  
WINNER OF INFOWORLD TECHNOLOGY  
OF THE YEAR AWARD, 2015 AND 2016

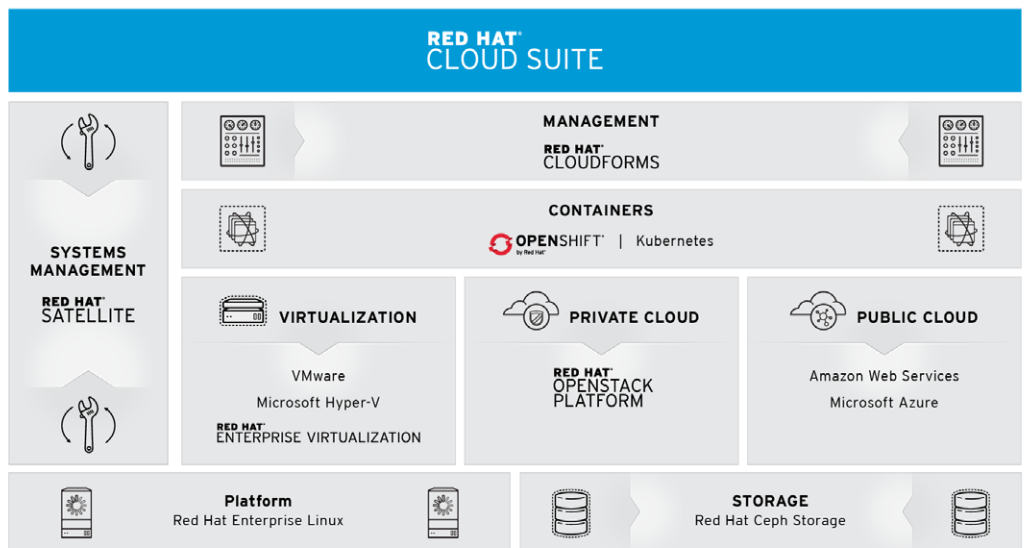
## PRODUCT OVERVIEW

Red Hat® Cloud Suite provides a container-based application development platform, built on massively scalable cloud infrastructure, all managed through a common management framework. Customers can move existing workloads to scale-out cloud infrastructure and accelerate new cloud-based services for private cloud and application development. With Red Hat Cloud Suite, the operations team can deliver public cloud-like services to developers and the business while maintaining control and visibility.

At its infrastructure foundation, Red Hat Cloud Suite builds a private cloud based either on Red Hat OpenStack® Platform with public cloud-like scalability, or Red Hat Enterprise Virtualization, based on high-performance virtualization. Both underlying choices provide secure, scalable foundations for hosting the OpenShift® Enterprise by Red Hat development platform. OpenShift automates the development and administration of container-based applications.

This marriage of infrastructure and application development is seamlessly administered by a unified, single management framework offered by Red Hat CloudForms and complemented by powerful life cycle management from Red Hat Satellite. The solution also leverages a Solution-as-a-Service (SaaS)-based risk management tool, Red Hat Insights, that collects infrastructure analytics, allowing customers to quickly and proactively manage technical risks before they impact operations.

Red Hat Cloud Suite users can also make use of Red Hat Ceph Storage, an open, massively scalable, highly flexible software-defined storage system that is now bundled with Red Hat OpenStack Platform. Red Hat Ceph Storage is designed for commodity hardware and is overwhelmingly preferred by OpenStack users because of its seamless integration with OpenStack’s modular architecture and storage components.



facebook.com/redhatinc  
@redhatnews  
linkedin.com/company/red-hat

*“The openness and flexibility of the private cloud solution and the excellent support we receive for our already-deployed Red Hat solutions drove our decision to select Red Hat for our new IT infrastructure.”*

DON O’CONNOR,  
MANAGING DIRECTOR,  
TECHNOLOGY OPERATIONS,  
MUFG UNION BANK N.A.



RED HAT CEPH STORAGE, WINNER  
OF BRAND LEADER AWARD FOR  
SCALE-OUT OBJECT STORAGE  
SOFTWARE, 2015 AND 2016

## CUSTOMER BENEFITS

Red Hat Cloud Suite provides a common interface and technology stack for operations, IT administration, development, and lines of business. The suite includes a management framework across application development and infrastructure layers, along with complete operation and life cycle management as well as proactive risk mitigation.

Developers use Red Hat Cloud Suite to gain rapid access to compute power and to continuously integrate and deploy applications across a broad range of languages and frameworks. Operators can simultaneously monitor and govern these services and applications across a hybrid infrastructure, from development to production. CIOs can now align better with business requirements, meeting market needs and customer requirements.

Key product advantages include:

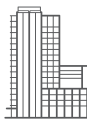
- **Integrated components** – Tightly integrated, fully supported components that act in concert to provide an open hybrid cloud.
- **Unified management** – A single management framework across infrastructure and application development layers, plus complete operation and life cycle management with proactive risk mitigation.
- **Full-featured application development and containers** – Flexible container-based application development abilities via OpenShift Enterprise.
- **Open and interoperable** – Open API exposure allows customers to enhance or replace existing components with their choice of existing technologies, with no vendor lock-in or proprietary technology.
- **Massive ecosystem** – It’s easy to add networking, storage, and other cloud solutions, including both Red Hat and third-party products. In addition, the suite works on any number of commodity hardware options and oversees activity in public clouds.

## TECHNICAL SPECIFICATIONS

### SYSTEM REQUIREMENTS INCLUDE:

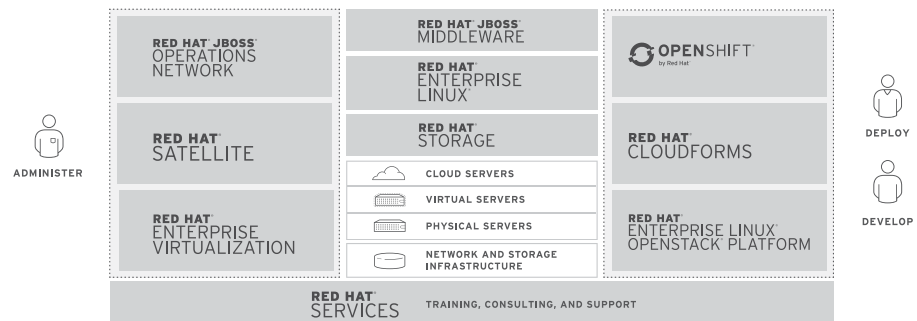
- Red Hat Enterprise Virtualization Manager: Recommended 1-2 quad core x86\_64 processors, 16GB RAM, 50GB disk, 1 Gbps Ethernet network interface controller (NIC).
- Red Hat Enterprise Virtualization Hypervisor: 1 CPU with Intel® 64 or AMD64 CPU extensions, and AMD-VTM or Intel VT hardware virtualization extensions, 2GB RAM, 10GB local disk storage, 1GB Ethernet NIC.
- Red Hat OpenStack Platform compute nodes: 64-bit x86 processor with support for the Intel 64 or AMD64 CPU extensions, and the AMD-V or Intel VT hardware virtualization extensions enabled. 2GB RAM, 50GB available disk space, 2 x 1 Gbps network interface cards.
- Red Hat Ceph Storage 1.3: Minimum 2-core 64-bit x86 processors per host, minimum of 2GB of RAM per OSD process, and 16 GB RAM per monitor host, Red Hat Enterprise Linux® 7.2 or later.
- Red Hat OpenStack Platform controller nodes: 64-bit x86 processor with support for the Intel 64 or AMD64 CPU extensions, and the AMD-V or Intel VT hardware virtualization extensions enabled. Red Hat Enterprise Linux 6.5 or later, 2GB RAM, 50GB available disk space, 1 Gbps network interface cards.

- Red Hat CloudForms: Delivered as a virtual appliance in Open Virtualization Format (OVF) for use on most virtual infrastructures.
- Red Hat Satellite: 64-bit architecture, Red Hat Enterprise Linux 6.5 or later, a minimum of 2 CPU cores, minimum of 8GB memory, but ideally 12GB. During installation, any additional yum repositories other than those specified in the Red Hat Satellite installation documentation must be disabled.
- Red Hat Insights: 64-bit architecture, Red Hat Enterprise Linux 6 or later.
- OpenShift Enterprise: Minimum hardware is two Intel x64 servers each with 2 cores and 4GB RAM. Actual sizing subject to capacity requirements.



## ABOUT RED HAT

Red Hat is the world's leading provider of open source software solutions, using a community-powered approach to reliable and high-performing cloud, Linux, middleware, storage, and virtualization technologies. Red Hat also offers award-winning support, training, and consulting services. As a connective hub in a global network of enterprises, partners, and open source communities, Red Hat helps create relevant, innovative technologies that liberate resources for growth and prepare customers for the future of IT.



facebook.com/redhatinc  
@redhatnews  
linkedin.com/company/red-hat

**NORTH AMERICA**  
1 888 REDHAT1

**EUROPE, MIDDLE EAST,  
AND AFRICA**  
00800 7334 2835  
europe@redhat.com

**ASIA PACIFIC**  
+65 6490 4200  
apac@redhat.com

**LATIN AMERICA**  
+54 11 4329 7300  
info-latam@redhat.com