



# Schiphol Airport

Sharing the experience of running a multi-cloud OpenShift Integration CPaaS with API Management in production

Mechiel Aalbers, Senior Technical Application Coordinator  
Pim Gaemers, Senior Integration Specialist  
Roel Hodzelmans, Senior Solution Architect

at Schiphol Group  
at Rubix  
at Red Hat

4th of May 2017

# Presenters

Mechiel Aalbers, Senior Solution Architect at Schiphol Group



<https://www.linkedin.com/in/mechiel-aalbers-7ba676a7/>



Pim Gaemers, Senior Integration Specialist at Rubix



<https://www.linkedin.com/in/pimgaemers/>



<https://pgaemers.wordpress.com>



Roel Hodzelmans, Senior Solution Architect at Red Hat



<https://nl.linkedin.com/in/roelhodzelmans>



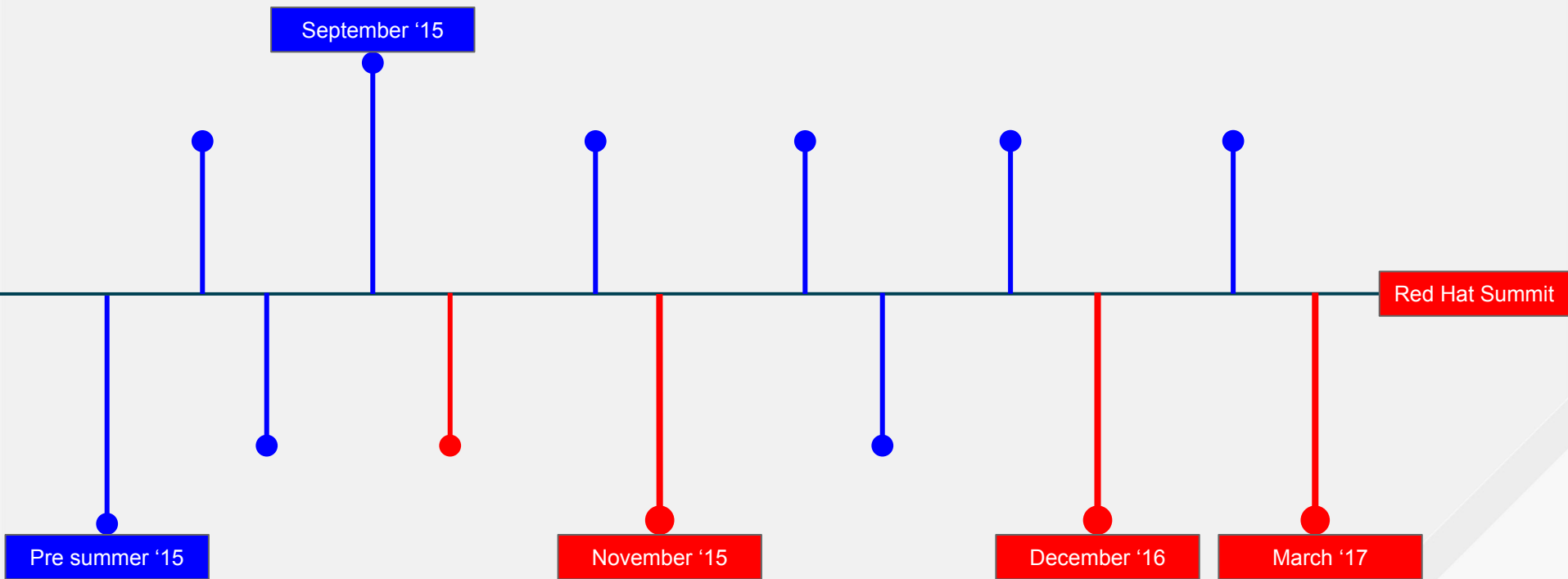
@RoelHodzelmans



# SETTING THE STAGE

# Journey

to the World Leading Digital Airport



# Vision

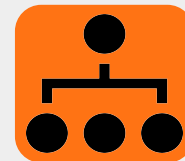
on the World Leading Digital Airport

## Business vision

- Stimulate internal and cross sector innovation
- Provide seamless passenger journey with open data and leading technology
- Enable (cost)efficient operations with open data and leading technology

Open Flight  
Database via  
API's

Existing  
relations  
(many)



### Private

Digital Channels  
Operations  
Projects  
....



### Sector

Airlines  
Customs  
Airports  
Travel  
Agencies  
.....



### Public

Start ups  
Developers  
Google  
.....

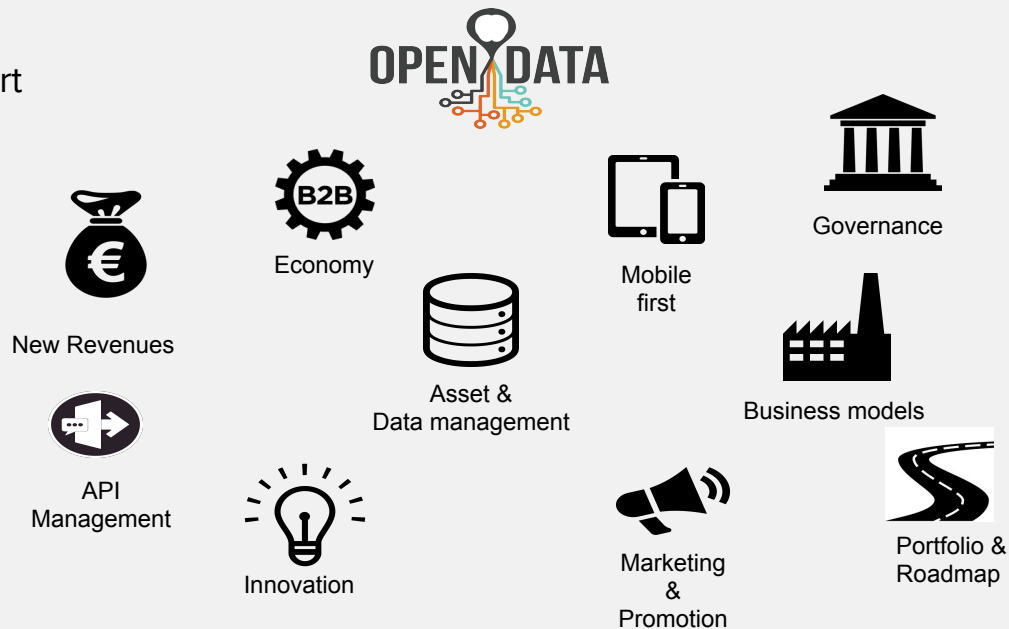
# CRAFTING THE SOLUTION

# Means

To move to the World Leading Digital Airport

## Choices to make

- API management



Open Flight  
Database via  
API's

Proof of  
Concept  
with 3Scale

Existing  
relations  
(many)

Vendor  
Selection for  
API  
Management

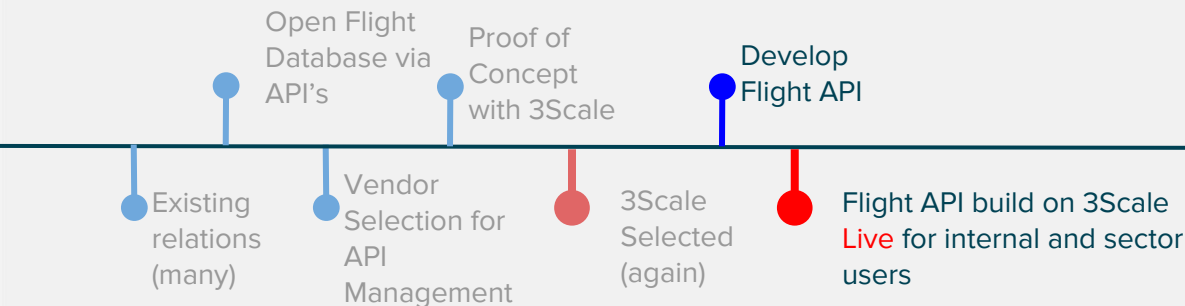
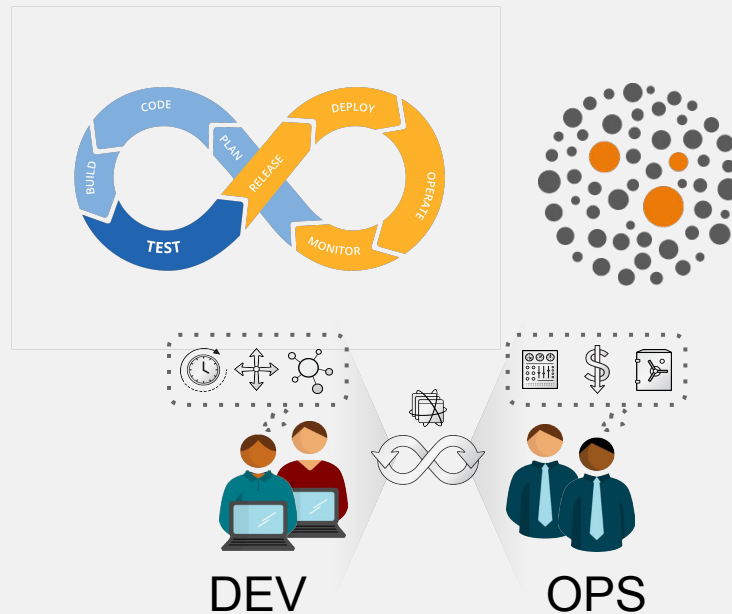
3Scale  
Selected  
(again)

# Means

To move to the World Leading Digital Airport

## Choices to make

- API management
- Devops / Microservices / CI&CD



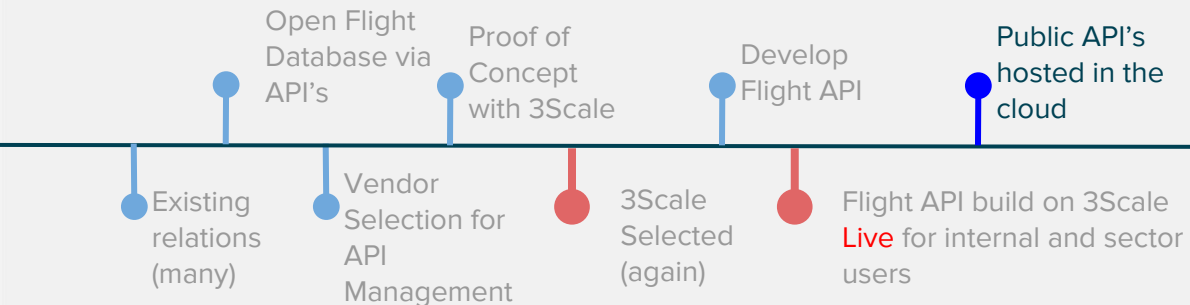


# Means

To move to the World Leading Digital Airport

## Choices to make

- API management
- Devops / Microservices / CI&CD
- Flexibility / Scalability / Elasticity / On-Demand



# Means

To move to the World Leading Digital Airport

## Choices to make

- API management
- Devops / Microservices / CI&CD
- Flexibility / Scalability / Elasticity / On-Demand
- Clouds and Containers



Open Flight  
Database via  
API's

Proof of  
Concept  
with 3Scale

Develop  
Flight API

Public API's  
hosted in the  
cloud

Start implementing  
OpenShift Container  
Platform on Azure

Provision Flight API  
on OpenShift on  
Azure

Existing  
relations  
(many)

Vendor  
Selection for  
API  
Management

3Scale  
Selected  
(again)

Flight API build  
on 3Scale Live  
for internal and  
sector users

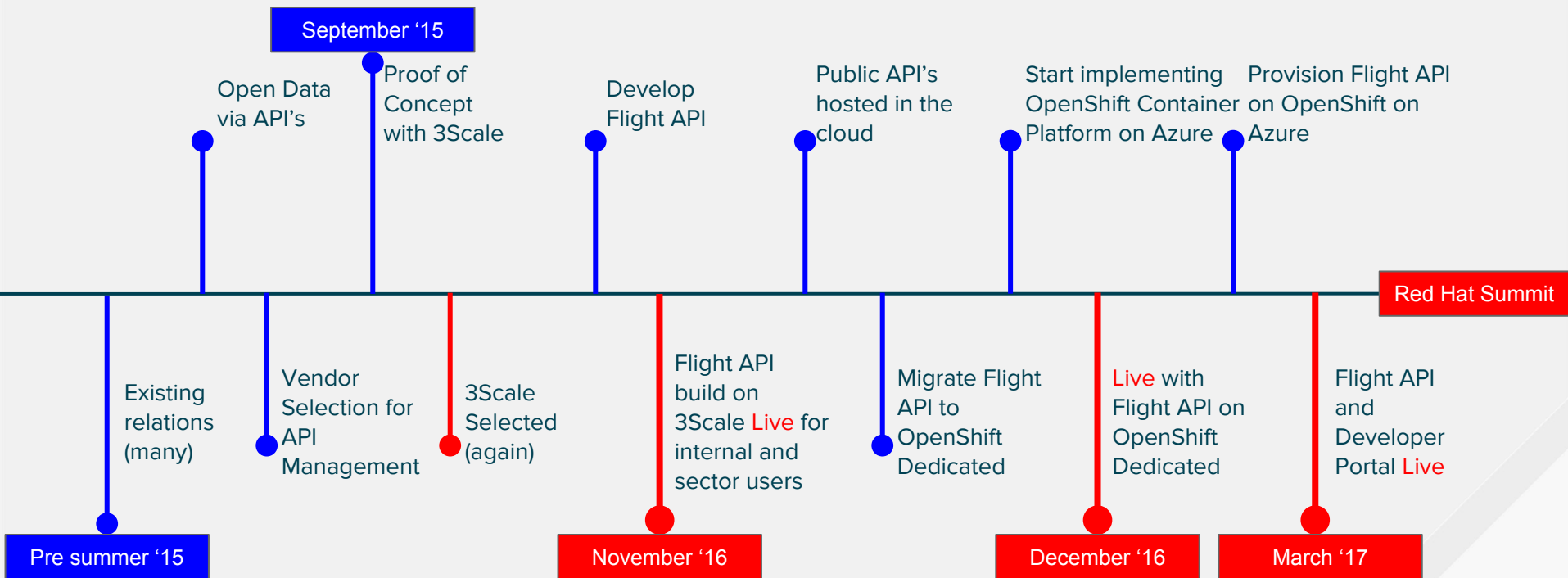
Migrate Flight  
API to  
OpenShift  
Dedicated

Live with  
Flight API on  
OpenShift  
Dedicated

Flight API  
and  
Developer  
Portal Live

# First leg of the Journey

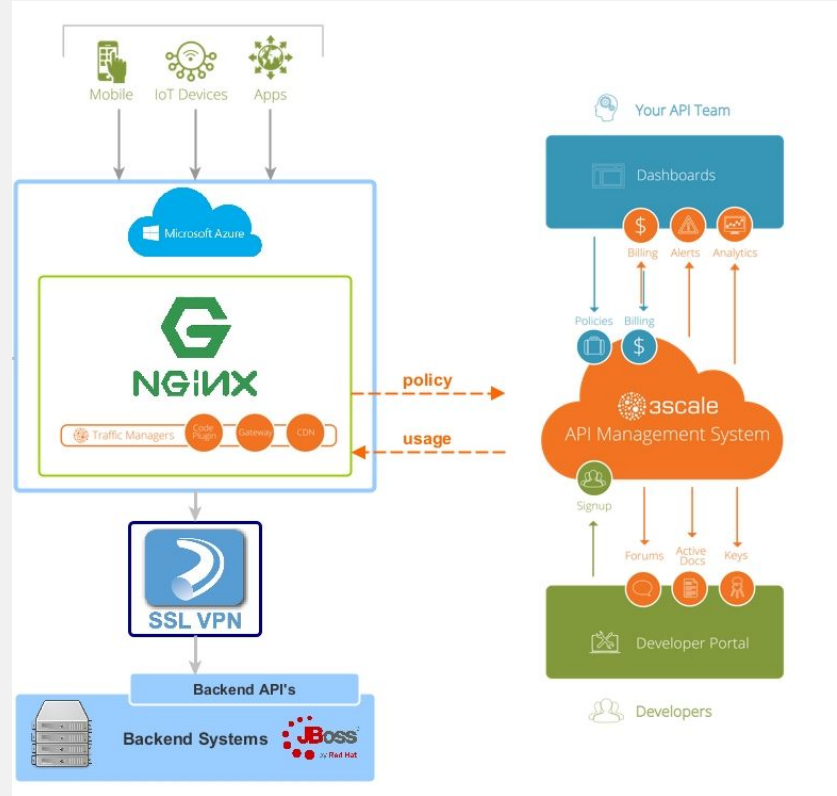
to the World Leading Digital Airport



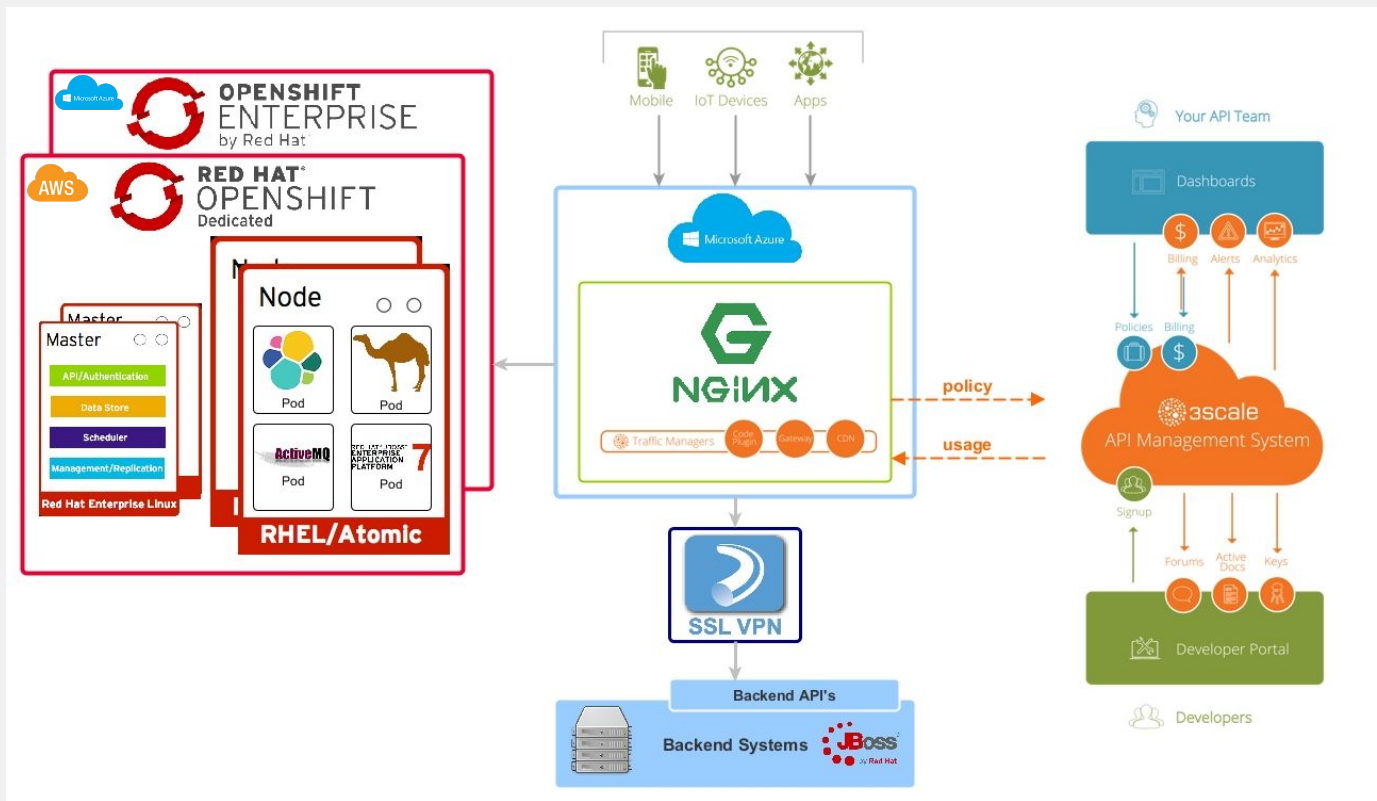
# SOLUTION ARCHITECTURE

What is running and foreseen

# Solution architecture



# Solution architecture live today



# LIVE DEMO TIME!

May the Demo & WiFi Gods have mercy on our souls



## Schiphol APIs Developer Portal

Amsterdam Airport Schiphol offers a growing range of APIs that enables innovators to explore and use all kinds of airport data for new applications. Applications that can improve the customer experience of the passengers that fly to, from and via Amsterdam Airport Schiphol.

### Sign up

By signing up you agree to the following legal [terms and conditions](#).

- ↓ Get started
- ↓ Explore the API's
- ↓ Terms and conditions
- ↓ FAQ

## Getting Started

# 1

Explore the available Schiphol APIs  
below

# 2

Sign up for a Schiphol API account

# 3

Sign up to subscribe to the API(s) that  
you are interested in

## Explore the API's





## Supporting quotes

*“Red Hat OpenShift Container Platform has truly stolen my heart. It is innovative and lets us deploy quickly and easily control our containers. “We’re very happy about OpenShift Container Platform.”*

MECHIEL AALBERS  
SENIOR SOLUTION ARCHITECT, AIRPORT OPERATION SERVICES,  
AMSTERDAM AIRPORT SCHIPHOL

*“We are shifting to working in agile, dedicated teams with a lot of autonomy. From an infrastructure perspective, we would like to stay in control, but we want to let other teams make their own choices within that framework. Red Hat OpenShift helps us do so.”*

GARBIS VAN OKBURCHT  
I.T. MANAGER, AIRPORT OPERATION SERVICES,  
AMSTERDAM AIRPORT SCHIPHOL

## Responses from the Airport Community

*“We want to support the traveler as well as possible with personal and relevant information about the airport. Our API platform and data sharing with APIs is a key element in our best airport digital strategy.”*

*“As someone who is very interested in airports and technology I was happy to see the release of this API”*

RED HAT  
**SUMMIT**

# THANK YOU



[plus.google.com/+Schiphol](https://plus.google.com/+Schiphol)



[www.facebook.com/schiphol/](https://www.facebook.com/schiphol/)



[linkedin.com/company/schiphol-group](https://linkedin.com/company/schiphol-group)



[twitter.com/schiphol](https://twitter.com/schiphol)



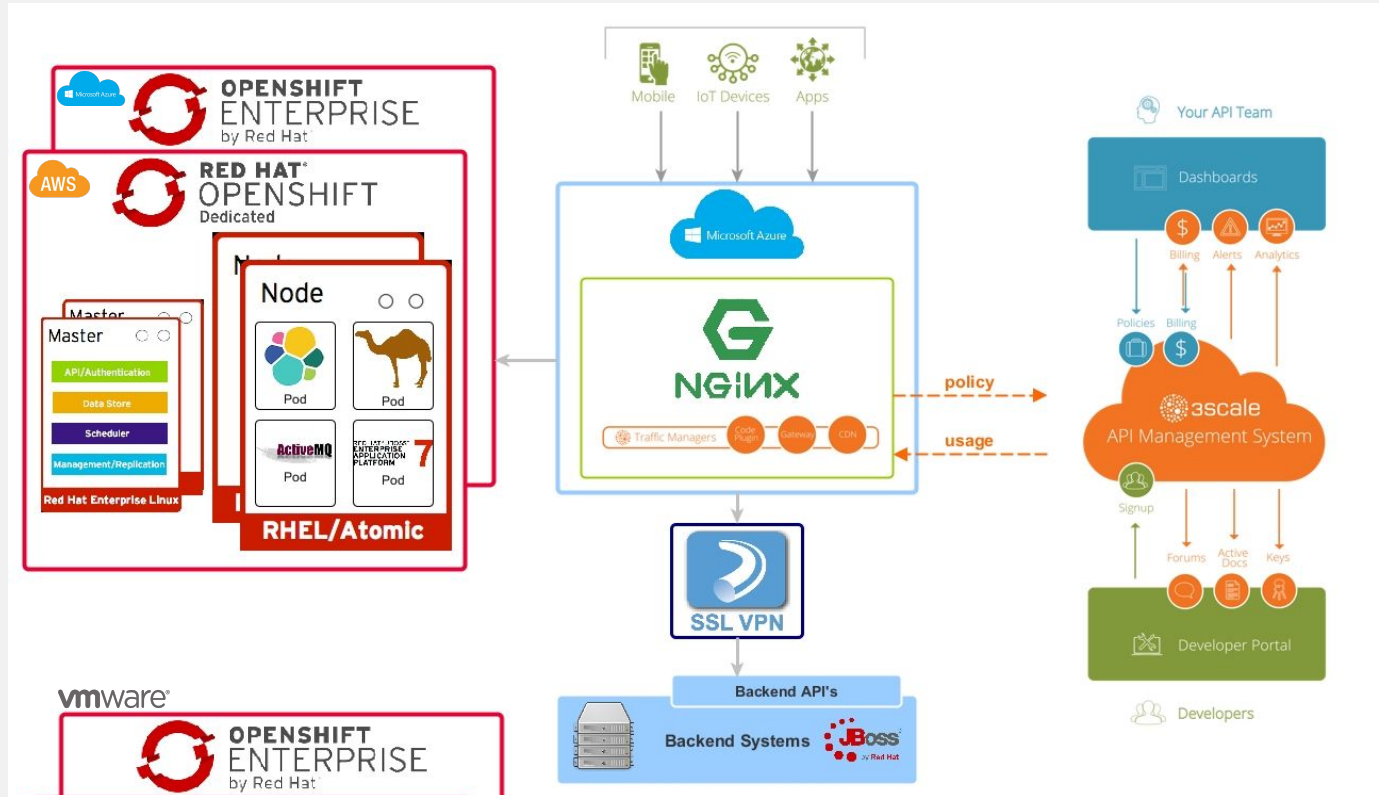
[youtube.com/user/schiphol](https://youtube.com/user/schiphol)

The logo consists of a red speech bubble shape pointing downwards. Inside the bubble, the words "RED HAT" are in a smaller, white, sans-serif font, and "SUMMIT" is in a larger, bold, white, sans-serif font below it.

**RED HAT  
SUMMIT**

**LEARN. NETWORK.  
EXPERIENCE  
OPEN SOURCE.**

# Solution architecture: future



RED HAT®  
CLOUDFORMS

RED HAT®  
STORAGE



# Solution architecture: CI/CD flow

