



CoreOS and Red Hat

Reza Shafii
Joe Fernandes
Brandon Philips
Clayton Coleman
May 2018





redhat®



CoreOS

Combining Industry Leading Container Solutions

RED HAT QUAY REGISTRY

ETCD

PROMETHEUS

METERING &
CHARGEBACK



RED HAT COREOS

CoreOS Tectonic

- Fully integrated and merged with OpenShift
- Adds automated operations and day 2 management (install, upgrades, monitoring, metering and chargeback)
- Best-in-class support for CaaS/KaaS/PaaS use cases

CoreOS Container Linux

- Red Hat CoreOS inspired by Container Linux & RHEL/Atomic
- Fully immutable, container optimized, automatically updated Linux host foundation for OpenShift

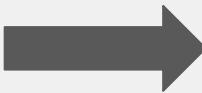
CoreOS Quay Registry

- Enterprise container registry; self managed & as-a-service
- Premium offering usable standalone or with OpenShift
- Geo-replication, vulnerability scanning, build automation

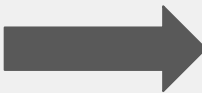
Bringing Automated Operations to OpenShift

- App/Service Operations
- Multi-Cluster/Kubernetes Platform Operations
- Linux Host Operations

OPENSIFT & TECTONIC + OPERATOR FRAMEWORK



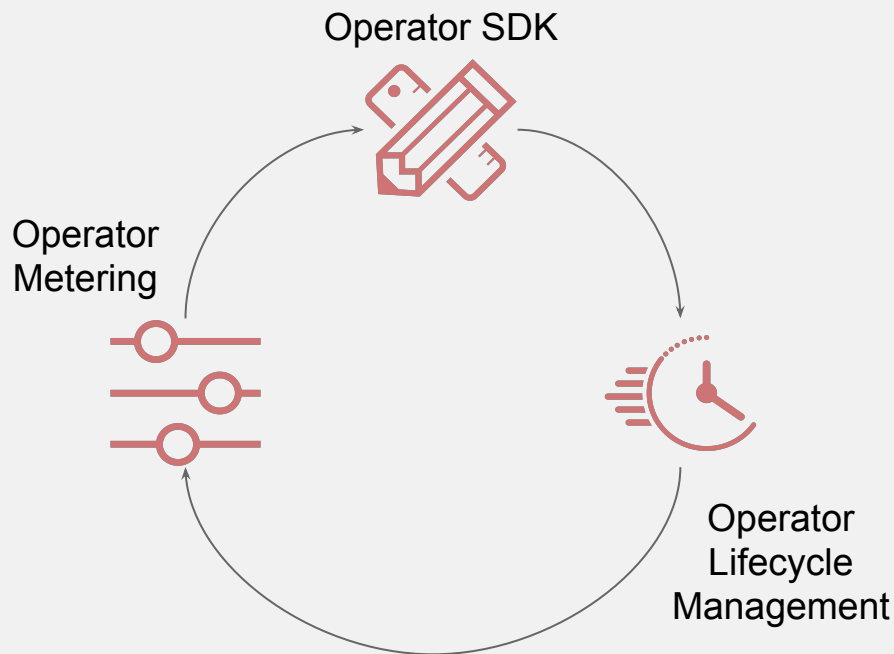
Single cloud and sticky



Hybrid and open

Open Source

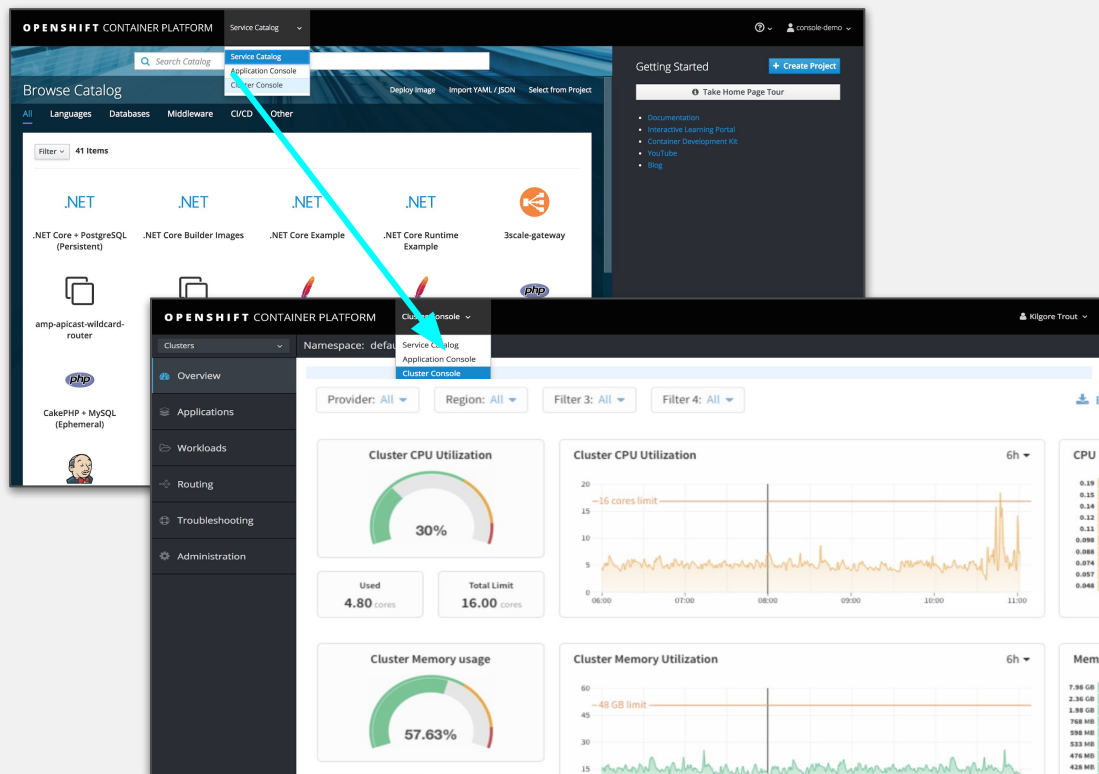
Introducing the Operator Framework



Operator Framework is an open source toolkit to manage application instances on Kubernetes in an effective, automated and scalable way.

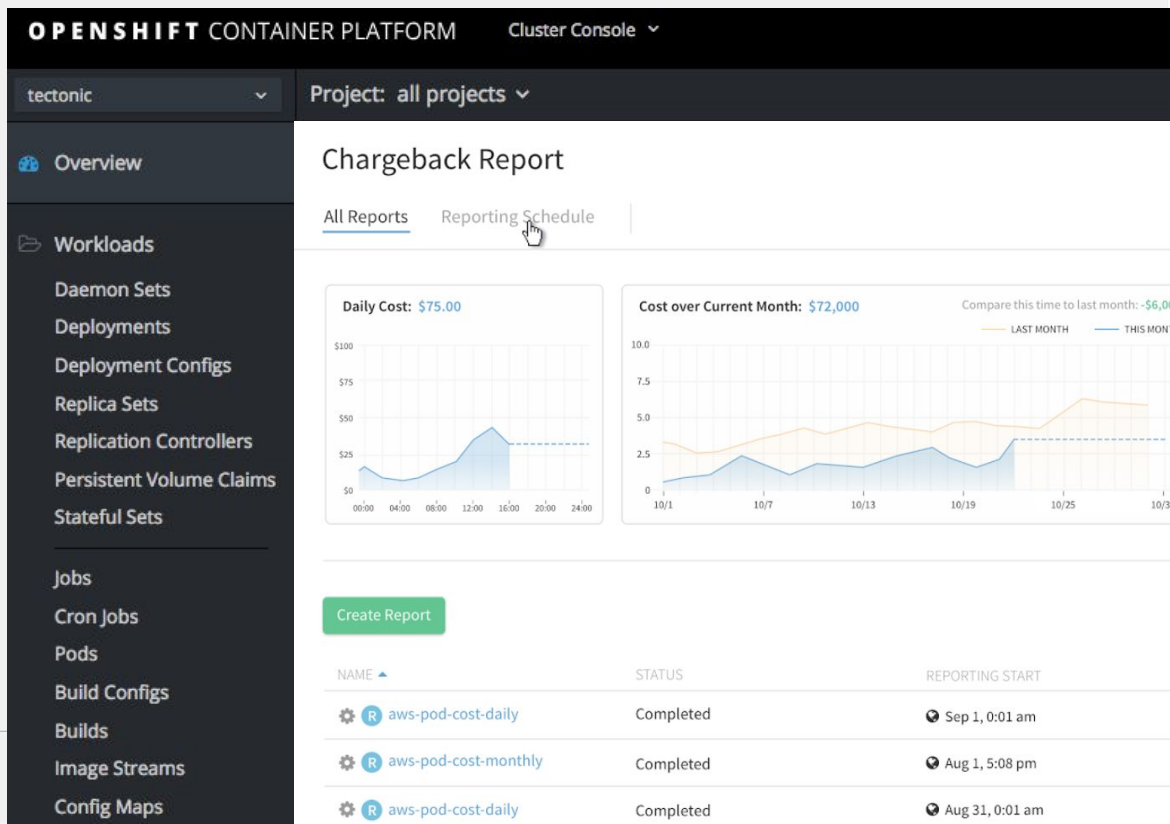
New OpenShift Admin Console

- OpenShift will introduce an Admin centric console that leverages the Tectonic console
- The Operator Lifecycle Management and Metering capabilities of Tectonic will be exposed in this new console



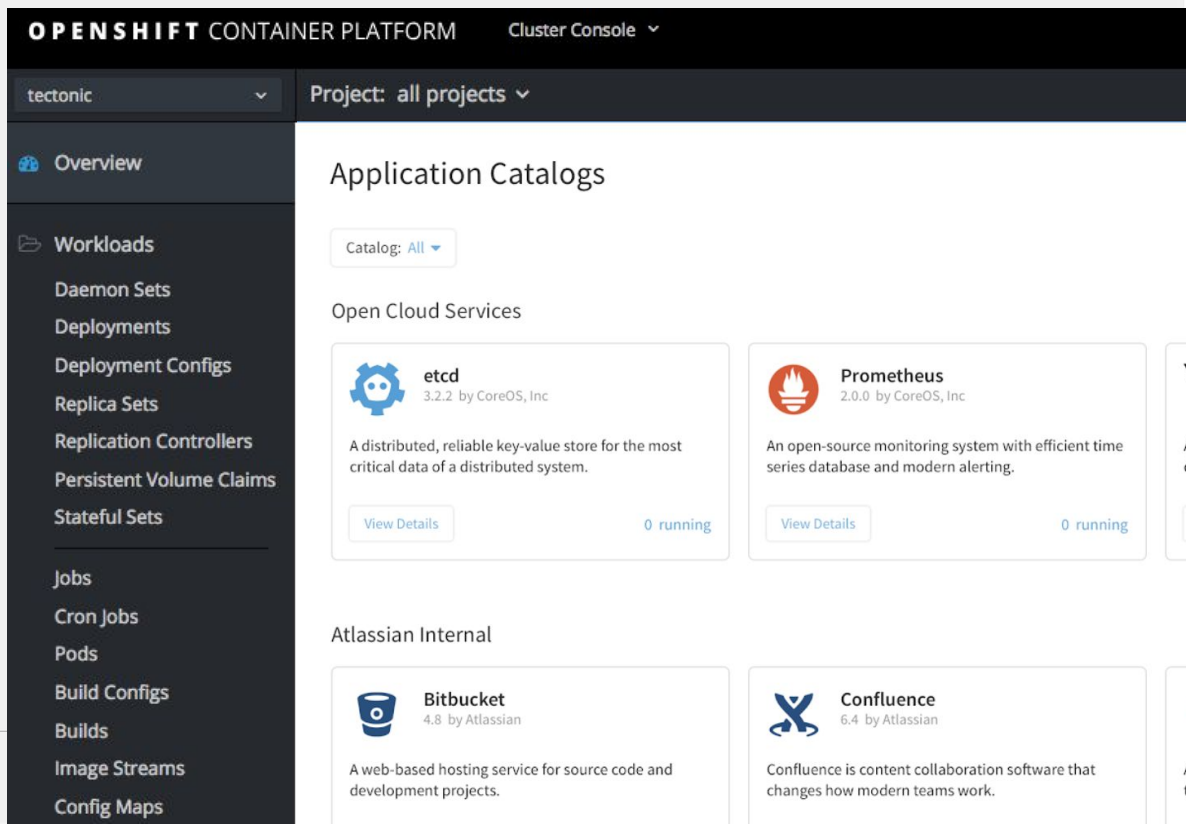
Operator metering - In OpenShift Admin console

- CPU, Memory, networking, and storage tracking + reports
- Actual and reserved usage
- By namespace, pod, label, cloud service, and app type
- Correlated to underlying IaaS cost



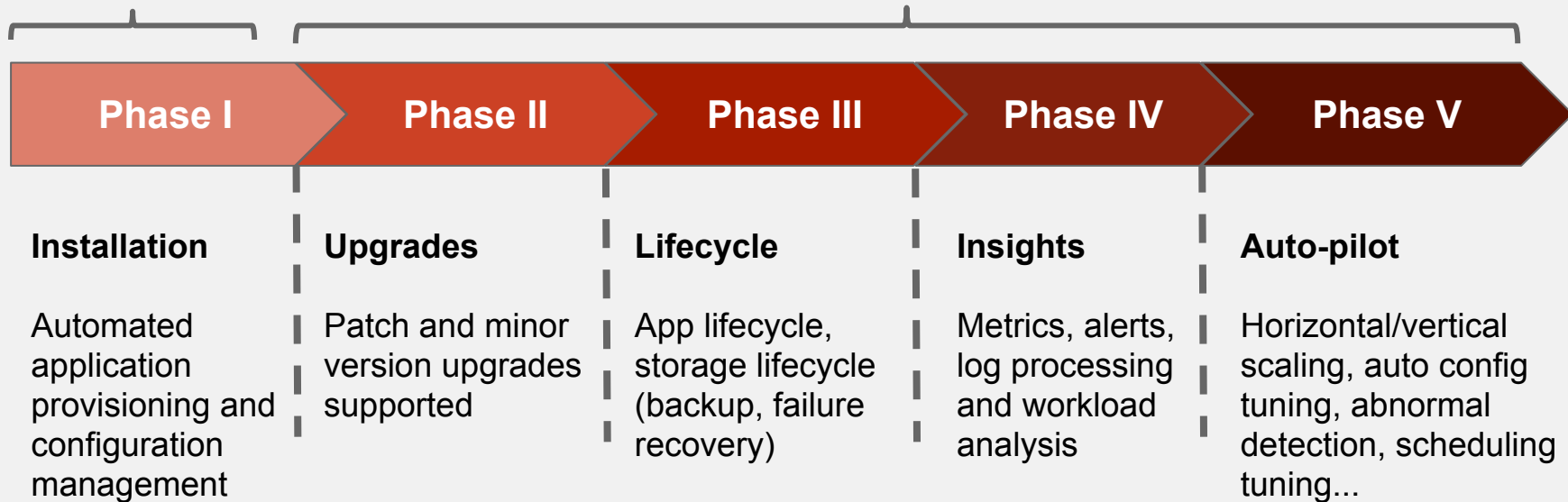
Operator Lifecycle Manager - In OpenShift Admin console

- Administrative view of Operator based services
- Includes catalogue of certified ISV services
- Customers can build/bring their own operator backed apps
- Helm apps are operator backed with zero coding



No need for operator development

Requires custom Operator - can be facilitated with SDK

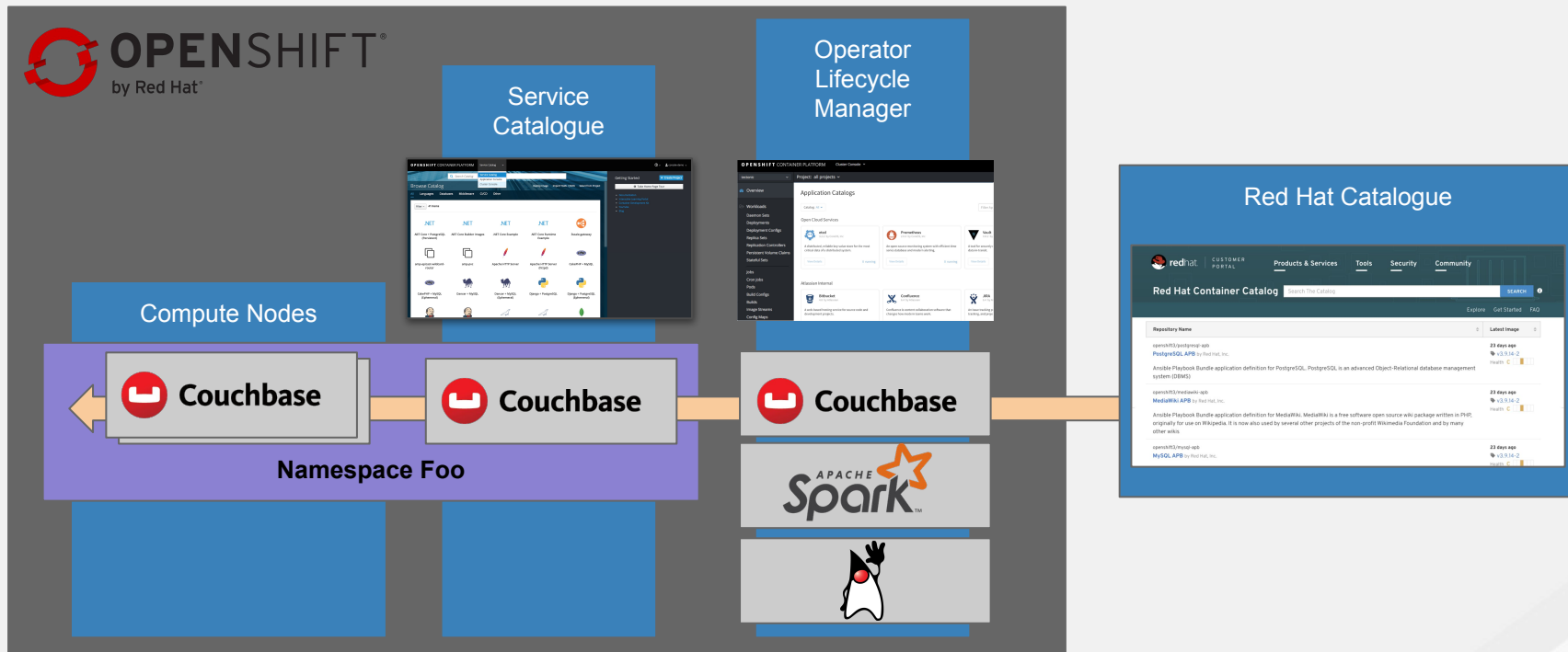


60+ ISVs planning to provide initial certified operators

- Certified operators will be available on Red Hat Container Catalog
- Can be imported into OpenShift Operator Lifecycle Manager
- Then exposed in OpenShift Service Catalogue

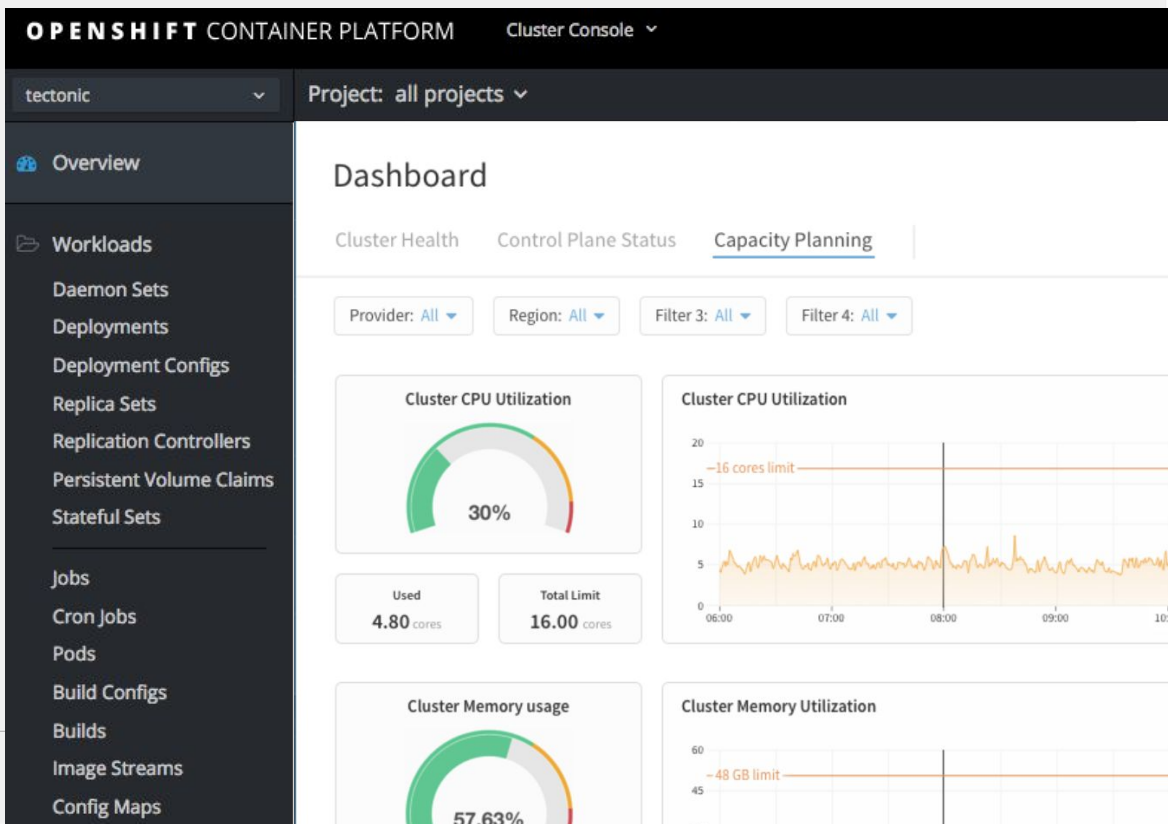


End-to-end workflow

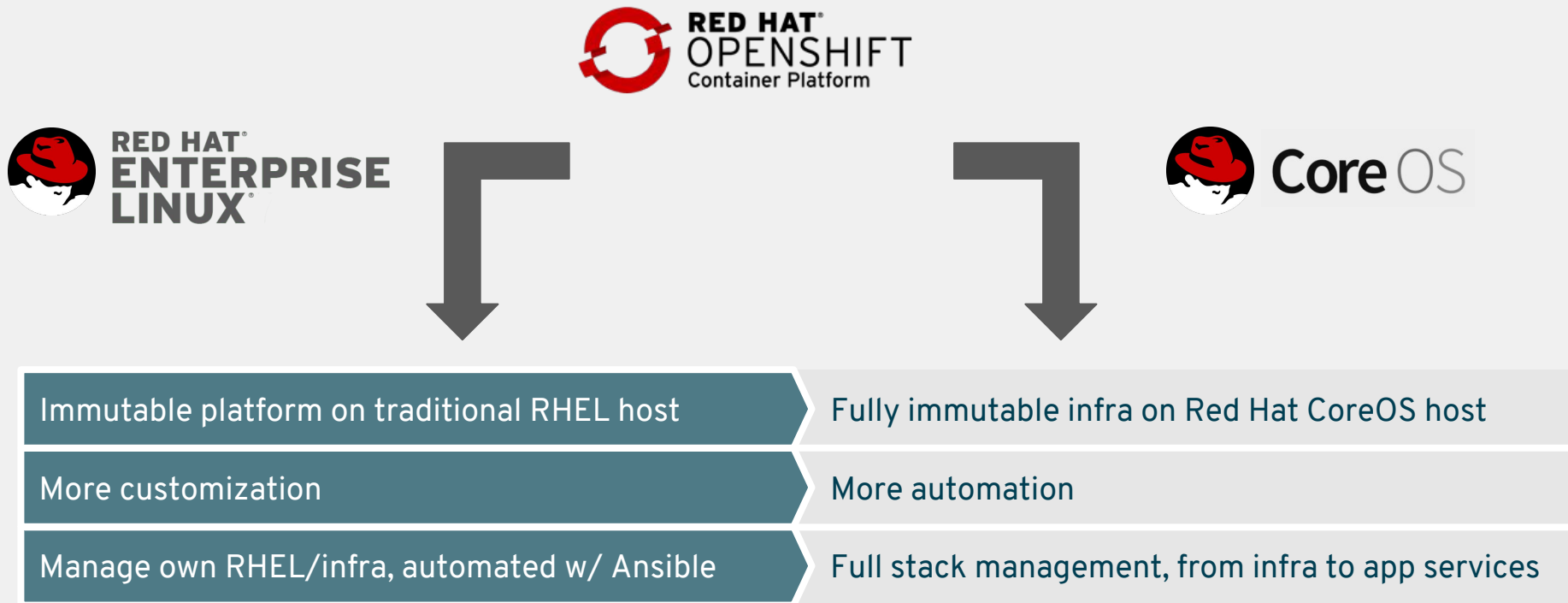


Out of the box infrastructure monitoring

- Cluster management for OpenShift Admins
- Cluster health, control plane status, and capacity planning
- Prometheus alerting with pre-configured alerts



OpenShift Installation/Upgrade Experience

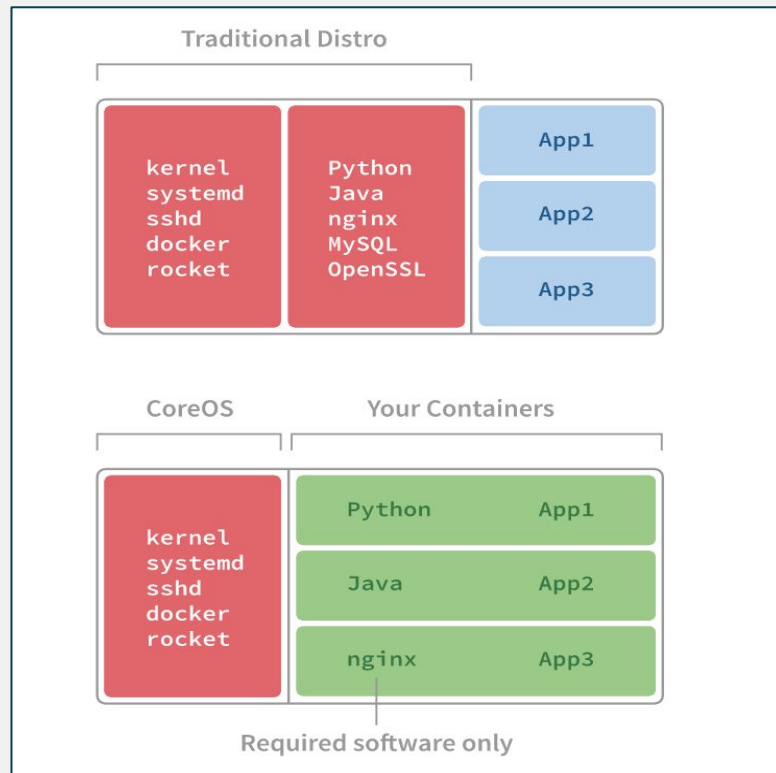


DEMO

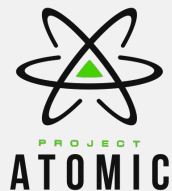
RED HAT COREOS

Container Linux

- Minimal Linux distribution
- Optimized for running containers
- Decreased attack surface
- Over-the-air automated updates



DELIVERING IMMUTABLE INFRASTRUCTURE WITH RED HAT COREOS



- Minimal Linux distribution
- Optimized for running containers
- Decreased attack surface
- Over-the-air automated updates
- Ignition-based Metal and Cloud host configuration
- Immutable foundation for OpenShift clusters

Container Linux and Red Hat Enterprise Linux: The road ahead

[Ben Breard, Red Hat](#), [Brandon Philips, Red Hat](#)

Now that CoreOS has joined Red Hat, what does the future hold for Container Linux? What about Red Hat Enterprise Linux Atomic Host? Will there be four Linux distributions in the Red Hat family?

In this session, we'll put an end to the speculation and dive into our strategy and roadmap for creating the next chapter in Linux history. Find out how we're changing the game around immutable infrastructure and automating the foundation of Red Hat OpenShift.

Date: Wednesday, May 9

Time: 11:45 AM - 12:30 PM

Room: 2014

Location: Moscone West - 2014

Session Type: Breakout

Session Code: S2704

QUAY

Quay Enterprise Registry

What is Quay?

Quay is the container and application registry developed by CoreOS. It builds, analyzes and distributes container images, and is used by thousands of companies, large and small, as part of their containerized infrastructure.



**Securely store
your containers**



**Easily build
and deploy
new containers**

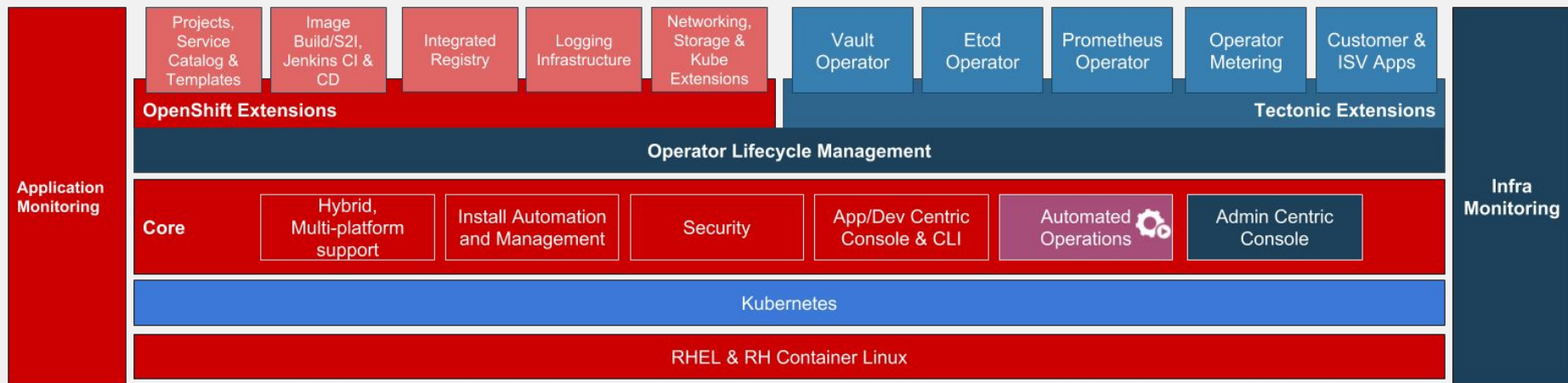


**Automatically
scan and secure
containers**

Red Hat Quay



- **Vulnerability Scanning (powered by Clair)**
continually scan your containers for vulnerabilities, giving you complete visibility into known issues and how to fix them
- **Geographic Replication**
Reliably store, build and deploy a single set of container images across multiple geographies
- **Build Image Triggers**
As push actions happen in your code repo (GitHub, Bitbucket, GitLab and Git), Quay will automatically build a new version of your app
- **Image Rollback with Time Machine**
View history of images and quickly and easily switch image builds



RED HAT
SUMMIT

THANK YOU



plus.google.com/+RedHat



facebook.com/redhatinc



linkedin.com/company/red-hat



twitter.com/RedHat



youtube.com/user/RedHatVideos

CUSTOMIZATION INSTRUCTIONS

To make a copy of this deck for your use, go to "File" > "Make a copy" > and save to your own Google Drive.

PRESENTATION RESOURCES

For help getting started with presentations, check out the official [Red Hat Presentation Guide](#).

NEED HELP?

If you have any questions about your session content or using the speaker portal, contact presenters@redhat.com.

INSERT DIVIDER COPY

CLICK TO ADD TITLE

Click to add subtitle

Insert paragraph of copy here. Do not exceed 40 words.

- Bullet
- Bullet
- Bullet