



# MIGRATING YOUR EXISTING APPLICATIONS TO NODE.JS ON OPENSIFT

App Modernization Done Right

Conor O'Neill  
Chief Product Officer  
Tuesday, May 8th, 2018



# WHO ARE **NEARFORM** AND WHAT DO THEY KNOW ABOUT NODE.JS?





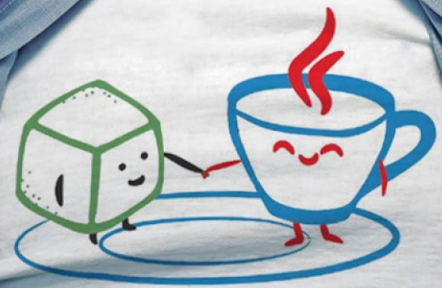
27% of the commits in the just-released  
Node.js 10.0.0 were from nearFormers

All of the major features in 10.0.0,  
outside of V8 itself, were led by nearFormers

The release manager for  
Node 10.x was James Snell



# WHY WOULD A JAVA-FOCUSED COMPANY CARE ABOUT NODE.JS?



SWEETEN YOUR **JAVA**  
WITH **NODE.JS**



# WHY IS NODE.JS THE ULTIMATE RUN-TIME FOR OPENS SHIFT?



# HOW CAN A CONTAINER PLATFORM AND A RUNTIME ENABLE MY ORGANISATION TO EVOLVE?



Developer Agility  
Organisational Agility  
Design-Led Development  
Continuous Integration / Continuous Delivery  
Microservices  
High Availability  
Stateful and Stateless Services  
Ease of hiring high-end young developers



# Dev Sec Ops

# HOW DO I **MOVE** TO BUILDING FULL-STACK JAVASCRIPT ENTERPRISE WEB APPLICATIONS?





Build your next service in Node.js

Leverage the massive NPM ecosystem

Build your next front-end in React

Deploy to OpenShift

Connect to your existing Enterprise systems including A-MQ and  
Kafka

Rinse and Repeat

# JUST SOME **NEARFORM** CUSTOMER SUCCESS

CONDÉ NAST



The New York Times

MOODY'S



# WHY USE THE NEARFORM-SUPPORTED NODE.JS IMAGES?



COME TALK TO US AT **BOOTH 833!**  
[conor.oneill@nearform.com](mailto:conor.oneill@nearform.com)

Conor O'Neill  
Chief Product Officer

Red Hat Summit 2018

