

The logo consists of a red speech bubble shape pointing downwards, containing the text "RED HAT" in a smaller font above "SUMMIT" in a larger font, both in white.

RED HAT
SUMMIT

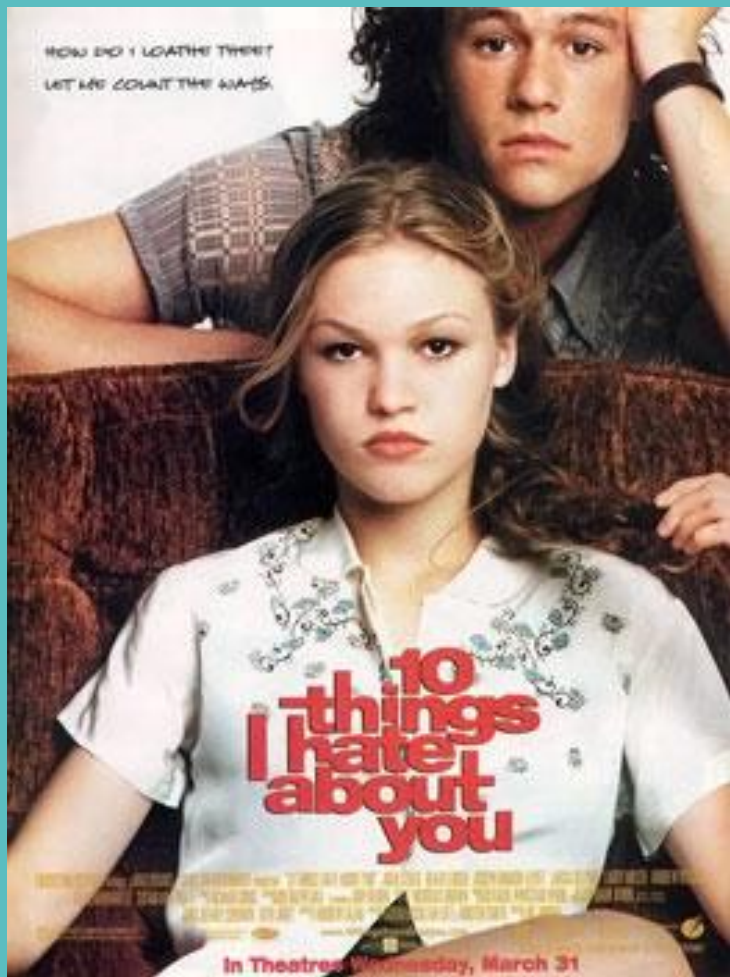
10 Things I Hate About You: Manage Windows like Linux with Ansible

Matt Davis
Senior Principal Software Engineer, Ansible Core
May 9, 2018

Who am I?

I LOVE





Not SSH

- WinRM (HTTP-based remote shell protocol)
- Non-interactive logon
- Different connection plugin
- Microsoft OpenSSH?

DEMO: WinRM Connectivity

Powershell

- Unlike Python, "just there" on modern Windows
- We can use .NET
- Powershell 3+, Windows 7/Server 2008+
- Access to the DSC universe via `win_dsc`

App Install/Maintenance

- win_chocolatey !
- win_package
- NOT win_msi

DEMO: win_chocolatey module

Reboots, oh the reboots...

- win_reboot action makes managed reboots trivial
- wait_for_connection is just the second half

Windows Update

- Basic, synchronous updates
- Uses configured source (Windows Update/WSUS)
- (new in 2.5): transparent SYSTEM + auto reboot

Windows Update

- win_updates:
 - category_names: CriticalUpdates
 - reboot: yes # new in 2.5!
 - blacklist: # new in 2.5!
 - KB4056892

IIS

- Modules for managing websites, webapps, apppools, virtual dirs, etc.

- win_iis_website:
 - name: Default Web Site
 - physical_path: C:\Inetpub\WWWRoot
- win_iis_webapp:
 - site: Default Web Site
 - name: OrchardCMS
 - physical_path: C:\Inetpub\WWWRoot\Orchard

Registry

- Manage individual key/value (win_regedit)
- Manage idempotent bulk import (win_regmerge)

- win_regedit:
 - path: HKLM\Software\Microsoft\Windows
 - name: SomeValueName
 - value: 0x12345

- win_regmerge:
 - path: ComplexRegData.reg

Services

- win_service looks/acts like Linux service module
- Provides fine control over complex service behavior config in Windows SCM (who/what/when/how)

Services

```
# ensure IIS is running
```

```
- win_service:  
  name: W3Svc  
  state: running
```

```
# ensure firewall service is stopped/disabled
```

```
- win_service:  
  name: MpsSvc  
  state: stopped  
  start_mode: disabled
```

Domains

- Windows' way of doing enterprise identity
- Makes auth complex
- Ansible can do "throwaway" domains easily
- Promote/depromote DCs
- Joining/leaving domain is simple
- Manage basic domain objects

Domains

```
# create a domain
- win_domain:
    dns_domain_name: mydomain.local
    safe_mode_password: ItsASecret

# add a domain user
- win_domain_user:
    name: somebody
    upn: somebody@mydomain.local
    groups:
      - Domain Admins
```

DEMO: Domain Join/Unjoin

ACLs

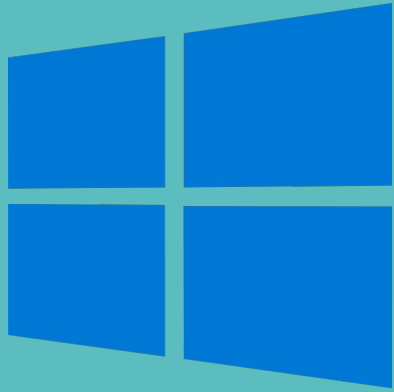
- More granular than Linux permissions
- SDDL?!
- More like SELinux ACLs

ACLs

- win_owner:
 - path: C:\Program Files\SomeApp
 - user: Administrator
 - recurse: true

- win_acl:
 - path: C:\Temp
 - user: Users
 - rights: ReadAndExecute,Write,Delete
 - inherit: ContainerInherit,ObjectInherit

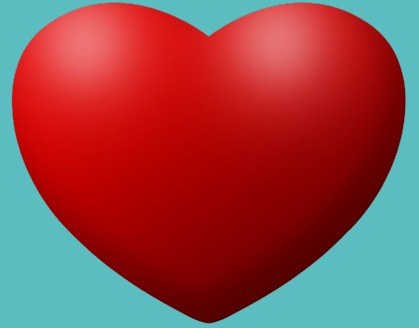
Wrapup



+



=



Questions?

RED HAT
SUMMIT

THANK YOU



plus.google.com/+RedHat



facebook.com/redhatinc



linkedin.com/company/red-hat



twitter.com/RedHat



youtube.com/user/RedHatVideos