

## RED HAT FUSE

Cloud-native distributed integration platform

DATASHEET

### WHY INTEGRATION?

Integration is now a strategic part of enterprise IT and is a requirement for:

- Comprehensive business insight.
- Robust ecosystems.
- Rich customer experiences.

### OVERVIEW

Red Hat® Fuse is a distributed integration platform with standalone, cloud, and iPaaS deployment options. Using Fuse, integration experts, application developers, and business users can independently develop connected solutions in the environment of their choice. This unified platform lets users collaborate, access self-service capabilities, and enforce governance.

As a universal platform, Fuse connects everything from legacy systems and application programming interfaces (APIs) to partner networks and Internet of Things (IoT) devices. As a result, it helps IT and non-technical users create a unified solution that brings the benefits of [agile integration](#) to the edges of the enterprise.

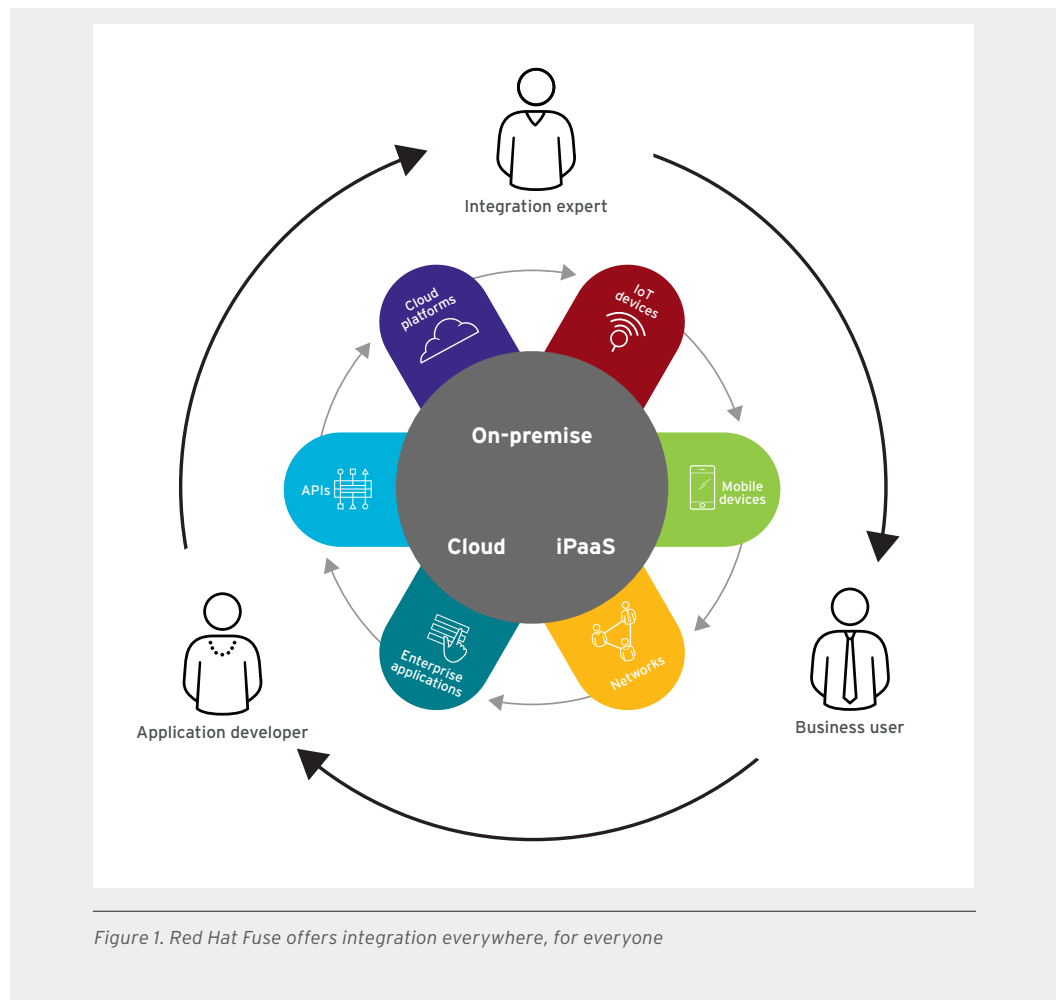


Figure 1. Red Hat Fuse offers integration everywhere, for everyone

## IDC: THE BUSINESS VALUE OF RED HAT INTEGRATION PRODUCTS

- Additional revenue per year: US\$400K
- Three-year return on investment (ROI): 520%
- Payback period: 6 months

[READ THE REPORT](#)

## KEY CAPABILITIES AND FEATURES

Red Hat Fuse offers users a choice of deployment method, architecture, and tooling to support collaboration across the enterprise.

- **User self-service:** Application developers can independently create, deploy, and extend microservices—and non-technical users can connect them—within corporate governance and processes.
- **Continuous delivery:** Integration experts and application developers can easily develop and experiment with integrated solutions. Testing, provisioning, and security of individual services are automated by the platform.
- **Distributed infrastructure:** Integrations, built from predefined Enterprise Integration Patterns (EIPs) and more than 200 connectors, are deployed on container-native infrastructure to adapt easily and scale quickly.

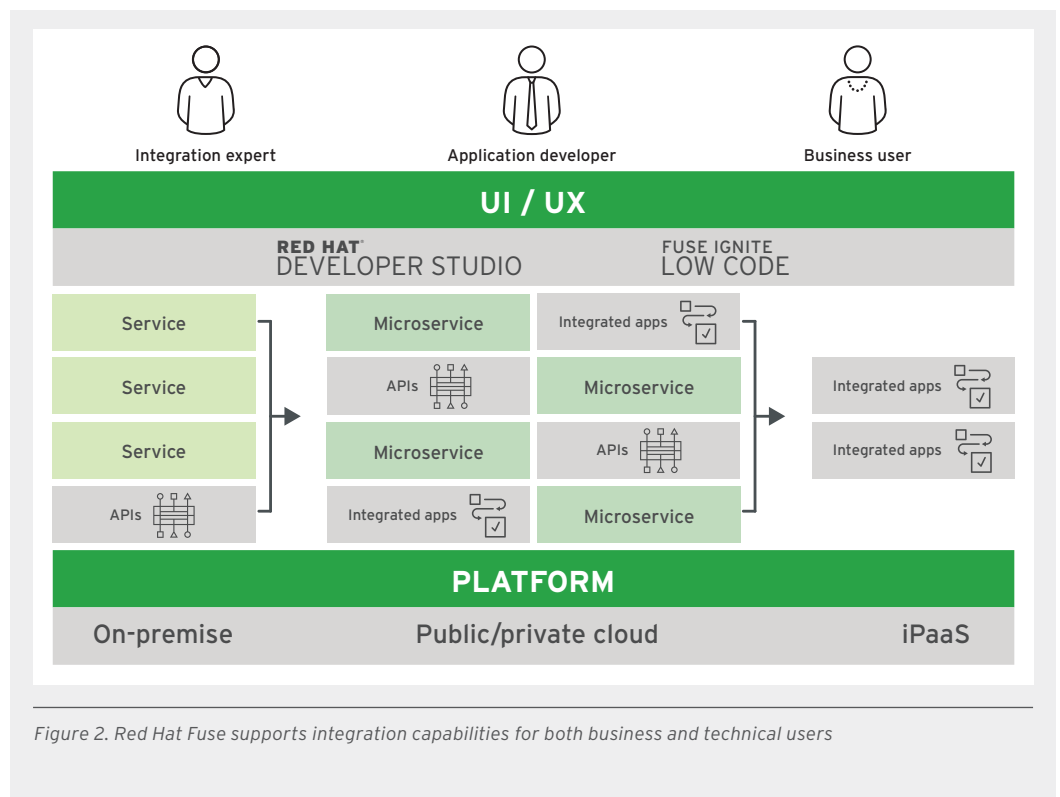
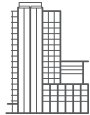


Figure 2. Red Hat Fuse supports integration capabilities for both business and technical users



## ABOUT RED HAT

Red Hat is the world's leading provider of open source software solutions, using a community-powered approach to provide reliable and high-performing cloud, Linux, middleware, storage, and virtualization technologies. Red Hat also offers award-winning support, training, and consulting services. As a connective hub in a global network of enterprises, partners, and open source communities, Red Hat helps create relevant, innovative technologies that liberate resources for growth and prepare customers for the future of IT.

**NORTH AMERICA**  
1 888 REDHAT1

**EUROPE, MIDDLE EAST,  
AND AFRICA**  
00800 7334 2835  
europe@redhat.com

**ASIA PACIFIC**  
+65 6490 4200  
apac@redhat.com

**LATIN AMERICA**  
+54 11 4329 7300  
info-latam@redhat.com



facebook.com/redhatinc  
@redhat  
linkedin.com/company/red-hat

## WHY RED HAT

Red Hat's products are based on popular open source projects, giving users access to the latest innovation, freedom from vendor lock-in, and a lower total cost of ownership.

Red Hat integrates community distributions, then performs rigorous quality assurance processes on the resulting distributions before packages them for enterprise IT. Red Hat's subscription-based products are backed by training and consulting services, providing the technology, expertise, and value you need to succeed today and in the future.

## LEARN MORE

- **Try Red Hat Middleware:** Install, run demos, and develop proof-of-concept (POC) projects by trying the software before you buy. Visit <https://access.redhat.com/downloads>.
- **Learn how to make the most of Red Hat Middleware:** View webinars, tutorials, demos, and more at [developers.redhat.com/middleware](https://developers.redhat.com/middleware).
- **Get involved in open source:** Write a blog, join a user group, contribute code, or test upcoming releases at [jboss.org/contribute](https://jboss.org/contribute) and [apache.org](https://apache.org).