

Red Hat Learning Subscription Enterprise

Enterprise-wide learning for skills transformation

Red Hat Learning Subscription Enterprise includes

- 100 standard or basic subscriptions

Each subscription includes access to

- 50+ Red Hat Training online courses, including new and updated courses.
- 400 hours of cloud-delivered, hands-on lab time.
- 100+ hours of video classroom course content.
- More than 1,000 recorded instructor videos.
- Course content delivered in up to nine languages.

Red Hat Learning Subscription Enterprise lets 100 employees acquire technical skills for 70% less than the cost of individual subscriptions.²

Rapid skills transformation for large teams

Digital transformation is skills transformation. Up-to-date technical skills are required to implement and manage emerging technology solutions, and accelerating in-house innovation cycles requires regular training. Without an ongoing investment in updating skills, organizations lose approximately 60% of their capabilities in just three years.¹

Red Hat® Learning Subscription Enterprise is a scalable and comprehensive learning solution for large organizations seeking ongoing training for a large number of users on Red Hat technologies. With Red Hat Learning Subscription Enterprise, you get:

- Access to all Red Hat Training courses, along with hands-on labs.
- On-demand access, worldwide, 24 hours per day, 7 days per week.
- No prerequisite level of expertise, allowing your teams to build their skills regardless of experience.
- An interactive, intuitive learning interface that helps users and managers easily track progress toward training and certification goals.

Red Hat Training produces real results

A recent IDC study found that participating in Red Hat Training delivered a number of enterprise benefits, including:¹

- Three-year return on investment (ROI) of 389%.
- 20% efficiency improvements in infrastructure management.
- 12% faster development of new features.
- 71% less unplanned downtime.
- 36% efficiency improvements in help desk response and 50% faster resolution of issues when they occur.
- Annual business impact of US\$53,422 per student.

The right Red Hat Training solution for large teams

With Red Hat Learning Subscription Enterprise, implementation and management are simple, and training dollars are stretched for maximum benefit.

A fast, simple onboarding process allows users to get started with their learning quickly, and comprehensive reporting capabilities provide streamlined operational control and tracking for managers. Also, the enterprise bundle option offers significant cost savings. Priced approximately 70% less than individual subscriptions, Red Hat Learning Subscription Enterprise lets three employees acquire technical skills for less than the price of one individual subscription.²



facebook.com/redhatinc

[@redhat](https://twitter.com/redhat)

linkedin.com/company/red-hat

“Unplanned outages previously caused us—and our customers—some losses, due to issues with reliability. With current solutions, delivered after taking Red Hat Training courses, we are still at zero unplanned downtime, after more than two years.”

IDC survey participant¹

“The change we have experienced with Red Hat Training is the ability to go from two months to three minutes on a platform build.”

IDC survey participant²

Additional savings result from the ability to accommodate a large numbers of users without the cost of travel and time away from work.

Red Hat Learning Subscription Enterprise is purchased as a bundle of 100 individual standard or basic subscriptions, which helps you plan and budget for training with one predictable, annual subscription.

Table 1. Red Hat Learning Subscription tier comparison

| Basic | Standard |
|---|-------------------------------------|
| Self-paced access to more than 50 courses | Everything in basic plus: |
| Early access | Expert extras |
| 400 hours of cloud-based labs | 5 certification exams and 2 retakes |
| 10 e-book downloads | Expert chat |
| Learning paths | |

Get started

Red Hat Learning Subscription Enterprise provides the critical skills training your IT teams need in one flexible, economical, easy-to-manage solution.

Visit the Red Hat Learning Subscription product page for more information and to view a full list of courses: redhat.com/en/learning-subscription.

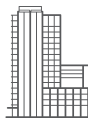
Contact your sales representative to begin the skills transformation journey.

¹ IDC, “The business value of Red Hat Training courses,” September 2017. redhat.com/en/resources/rh/tr/idc

² Red Hat Learning Subscription pricing, redhat.com/en/services/training/learning-subscription?level=basic#subscribe. Contact your Red Hat sales representative for Red Hat Learning Subscription Enterprise pricing.

About Red Hat

Red Hat is the world’s leading provider of enterprise open source software solutions, using a community-powered approach to deliver reliable and high-performing Linux, hybrid cloud, container, and Kubernetes technologies. Red Hat helps customers integrate new and existing IT applications, develop cloud-native applications, standardize on our industry-leading operating system, and automate, secure, and manage complex environments. Award-winning support, training, and consulting services make Red Hat a trusted adviser to the Fortune 500. As a strategic partner to cloud providers, system integrators, application vendors, customers, and open source communities, Red Hat can help organizations prepare for the digital future.



facebook.com/redhatinc
@redhat
linkedin.com/company/red-hat

North America
1 888 REDHAT1
www.redhat.com

**Europe, Middle East,
and Africa**
00800 7334 2835
europe@redhat.com

Asia Pacific
+65 6490 4200
apac@redhat.com

Latin America
+54 11 4329 7300
info-latam@redhat.com