

# RED HAT ACADEMIC OFFERINGS

Red Hat Infrastructure Site Subscription

BROCHURE



*“With Red Hat solutions, our end users can tell us what they need and we have the platforms and technology to deliver exactly the right service.”*

CHUCK GILBERT  
CHUCK GILBERT, TECHNICAL  
DIRECTOR FOR ADVANCED  
CYBERINFRASTRUCTURE SYSTEMS,  
INSTITUTE FOR CYBERSCIENCE,  
PENNSYLVANIA STATE UNIVERSITY

Colleges, universities and academic institutions face unique challenges. Whether committing to student success, researching solutions to society’s top issues, or maintaining a healthy population, higher education is a market like no other. Red Hat academic offerings were created to help educational institutions build out their IT infrastructure while avoiding vendor-lock in, reducing costs, and creating scalable and sustainable IT environments.

Red Hat products and solutions are ready-made for institutions of higher learning to:

- Run enterprise applications, such as learning management and student information systems, on an open, secure foundation.
- Rapidly modernize legacy education and operational applications with developer toolkits and container platforms.
- Achieve unified management of traditional, virtualized environments and cloud-based infrastructure.
- Improve interoperability with other technology vendors.
- Build public, private, and hybrid clouds.

Whether in an administrative, educational, or research-oriented capacity, Red Hat provides various software, products, and services to educational institutions interested in using commercially-supported open source technologies.

## RED HAT INFRASTRUCTURE SITE SUBSCRIPTION

The Red Hat Infrastructure Site Subscription (RHISS) provides a single campus access to these major Red Hat enterprise products:

- [Red Hat® Enterprise Linux®\\*](#)
- [Red Hat Virtualization](#)
- [Red Hat OpenStack® Platform](#)
- [Red Hat CloudForms](#)
- [Red Hat Gluster Storage](#)
- [Red Hat Insights](#)

A site subscription may be used by faculty, staff, and students in both non-production and production environments within the institution.

*Red Hat has discontinued the individual sale of Red Hat Satellite Server and Satellite Capsule Server (Academic Edition) subscriptions and instead is offering Satellite as part of the Red Hat Enterprise Linux Smart Management Add-On (included in all Red Hat Enterprise Linux Academic Edition subscriptions). The offering includes Satellite Server, Satellite Capsule Server, and Red Hat Insights.*

*\*Red Hat Enterprise Linux includes Workstation, Desktop, x86\_64 Server, HPC, SAP Applications, Power Big Endian, High-Availability, Resilient Storage, Load Balancer, Scalable File System, Extended Update Support, Software Collections, Developer Toolset, and Atomic Host*

## RED HAT ACADEMIC PRICING

Red Hat academic offerings help you get more IT for your money by offering campus-wide subscriptions across all departments based on full-time equivalent (FTE) employees. FTEs are calculated as follows:

- All full-time faculty and staff are considered one unit.
- Part-time staff are considered a half of a unit.
- Part-time faculty are considered a third of a unit.

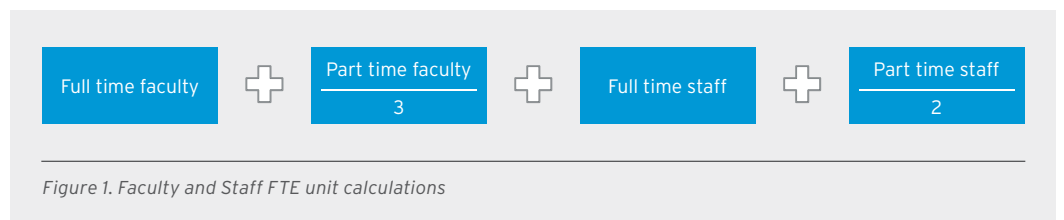


Figure 1. Faculty and Staff FTE unit calculations

For example: If you have 2,000 full-time faculty, 1,500 part-time faculty, 1,000 full-time staff, and 500 part-time staff, the FTE number is calculated as  $2,000 + (1,500 \div 3) + 1,000 + (500 \div 2) = 3,750$  FTEs.

PRODUCT	PRICE	SUPPORT LEVEL
Red Hat Infrastructure Site Subscription - Standard	\$34 per FTE	Standard
Red Hat Infrastructure Site Subscription - Premium	\$55 per FTE	Premium

### Frequently asked questions:

What if my FTE number ends with a fraction?

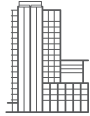
- If the total FTE number ends in a fraction, the total number is rounded to the next unit. For example: A 2,500 1/2 FTE number rounds to 2501 FTEs.

Is there a minimum requirement to participate in the site subscription programs?

- Yes. The minimum FTE number requiree is 1,000.

Do I have to subscribe for my entire institution?

- Yes. The program is for the entire institution.



## ABOUT RED HAT

Red Hat is the world's leading provider of open source software solutions, using a community-powered approach to provide reliable and high-performing cloud, Linux, middleware, storage, and virtualization technologies. Red Hat also offers award-winning support, training, and consulting services. As a connective hub in a global network of enterprises, partners, and open source communities, Red Hat helps create relevant, innovative technologies that liberate resources for growth and prepare customers for the future of IT.

## Eligibility

Red Hat academic offerings are intended to support education initiatives in the academic community at an affordable price.

- In the United States, these academic offerings are only available to accredited institutions recognized by the U.S. Department of Education. Subscription pricing is available to valid institutions and users (i.e., teachers, students, staff, researchers, etc.) affiliated with the institution.
- An educational institution is an organization, such as a primary or secondary school, college, or university that has a regularly scheduled curriculum, a regular faculty, and a regularly enrolled student body in attendance at a place where educational activities are regularly carried out.
- Federally Funded Research and Development Centers (FFRDCs) operated by an academic institution do not qualify for academic subscriptions.
- Verification of eligibility based on accreditation status can be determined at <http://ope.ed.gov/accreditation/Search.aspx>.

*\*Hospitals and healthcare systems are not eligible to acquire academic subscriptions unless a qualified educational institution wholly owns and operates them, or they have established academic accreditation.*

For any subscription or compliance related questions, contact your Red Hat account manager or your authorized Red Hat partner.

**NORTH AMERICA**  
1 888 REDHAT1

**EUROPE, MIDDLE EAST,  
AND AFRICA**  
00800 7334 2835  
europe@redhat.com

**ASIA PACIFIC**  
+65 6490 4200  
apac@redhat.com

**LATIN AMERICA**  
+54 11 4329 7300  
info-latam@redhat.com



facebook.com/redhatinc  
@redhat

linkedin.com/company/red-hat

Copyright © 2018 Red Hat, Inc.  
Red Hat, Red Hat Enterprise Linux,  
the Shadowman logo, and JBoss are  
trademarks or registered trademarks  
of Red Hat, Inc. or its subsidiaries in the  
United States and other countries. Linux®  
is the registered trademark  
of Linus Torvalds in the U.S. and  
other countries.

redhat.com  
#f12215\_0418

The OpenStack® Word Mark and OpenStack Logo are either registered trademarks / service marks or trademarks / service marks of the OpenStack Foundation, in the United States and other countries and are used with the OpenStack Foundation's permission. We are not affiliated with, endorsed or sponsored by the OpenStack Foundation or the OpenStack community.