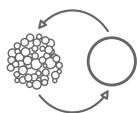


# RED HAT JBOSS FUSE GO-LIVE ASSESSMENT

DATASHEET



## BENEFITS

- Benefit from our experience as your project reaches its most critical phase – production deployment
- Reduce risk in the transition from development to production environments
- Identify and resolve potential reliability, performance, and scalability issues before they become critical
- Increase in-house technical skills as your team works side-by-side with an expert
- Multi-step workshop uses a proven framework to get real results

## MOVE INTO PRODUCTION WITH CONFIDENCE

In this program of consulting and mentoring, our consultants work closely with your operations team to ensure a successful hand off from development to operations. The assessment helps you establish reliable, highly available Red Hat® JBoss® Fuse and Red Hat® JBoss® A-MQ infrastructure, safely deploy your application, and build in monitoring and alerts. Bridging your development and operations teams, our consultants define the deployment architecture and operating procedures so you can maintain your infrastructure independently and successfully.

Red Hat Consulting is experienced in building large, mission-critical applications and is the company that makes it practical to integrate every facet of the business. No other group is as qualified to review your deployment and ensure you are getting the most from these open source projects. This offering consists of 3 on-site engagements:

### Phase 1 – Deployment planning (4 days to 2 months prior to go-live date)

This phase is used to understand the solution, analyze the architecture, and prepare for deployment. We analyze all performance, high availability, security, reliability, and management requirements, and create a customized deployment plan. This phase includes tuning the platform and product configuration, creating an initial prototype deployment (perhaps for system or UAT test), and structuring next steps.

### Phase 2 – Configuration and management (4 days to 1 month prior to go-live date)

This phase includes a complete review of the production environment configuration. Our consultants will review and finalize a production configuration, enable metrics, and integrate with the preferred management system. All specifications are recorded for continued maintenance.

### Phase 3 – Go live (2 days)

We will perform a readiness review of the configuration and assist in go-live activities. This phase includes final refinement of the specifications.

## HIGHLIGHTS

Upon close of the engagement, the service delivers:

- **10 days on-site mentoring with your operations staff** – Through a series of focused on-site, hands-on mentoring sessions, your operations team will become self-sufficient in administering and operating your Red Hat JBoss Fuse and Red Hat JBoss A-MQ applications.
- **Optimized configuration review** – Our consultants help your team create concise, clear configuration artifacts for your system.
- **Operational visibility** – Our consultants advise your team on providing appropriate operational metrics for your solution using your existing management infrastructure.
- **Knowledge capture** – Working with your team, our consultants will capture details of your solution, documenting the deployment architecture, installation and configuration notes, standard operating procedures, housekeeping activities, management, and alerting.



facebook.com/redhatinc  
@redhatnews  
linkedin.com/company/red-hat

redhat.com

**WHO SHOULD PARTICIPATE**

This offering is ideal for operations teams who are inheriting or deploying Red Hat JBoss Fuse solutions but may not have been engaged in the development of these solutions.

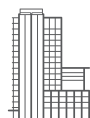
**GETTING THE MOST OUT OF YOUR GO-LIVE ENGAGEMENTS**

To get the most out of your time with our consultant on each engagement, we begin with an initial status meeting with the architect, project manager, and developers to determine and prioritize issues, and settle an agenda for the session. This will be followed by daily stand-up meetings to discuss progress, and a wrap-up meeting to discuss findings and outline recommendations and next steps.

Should there be product issues, enhancement requests, or bugs, we recommend that they be logged with Red Hat Support as part of a Red Hat enterprise subscription.

**PREREQUISITES**

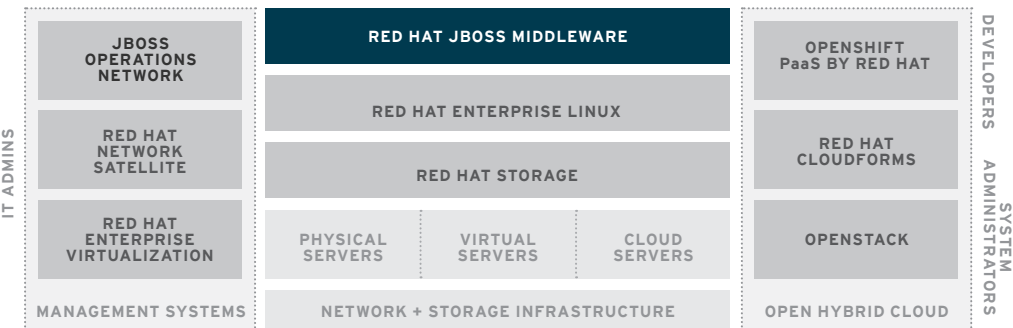
In preparation for your consultant visits, create and gather any design documentation, slides, or diagrams that will help our consultant better understand your environment and requirements. While working at your site, our consultants will need Internet and power connections. Access to a meeting room with projector and whiteboard for breakout sessions is highly desirable.



**ABOUT RED HAT**

Red Hat is the world’s leading provider of open source solutions, using a community-powered approach to provide reliable and high-performing cloud, virtualization, storage, Linux, and middleware technologies. Red Hat also offers award-winning support, training, and consulting services. Red Hat is an S&P company with more than 70 offices spanning the globe, empowering its customers’ businesses.

**RED HAT PORTFOLIO** *Learn more at [redhat.com](http://redhat.com).*



[facebook.com/redhatinc](https://facebook.com/redhatinc)  
[@redhatnews](https://twitter.com/redhatnews)  
[linkedin.com/company/red-hat](https://linkedin.com/company/red-hat)

**NORTH AMERICA**  
1-888-REDHAT1

**EUROPE, MIDDLE EAST AND AFRICA**  
00800 7334 2835  
[europa@redhat.com](mailto:europa@redhat.com)

**ASIA PACIFIC**  
+65 6490 4200  
[apac@redhat.com](mailto:apac@redhat.com)

**LATIN AMERICA**  
+54 11 4329 7300  
[latammktg@redhat.com](mailto:latammktg@redhat.com)